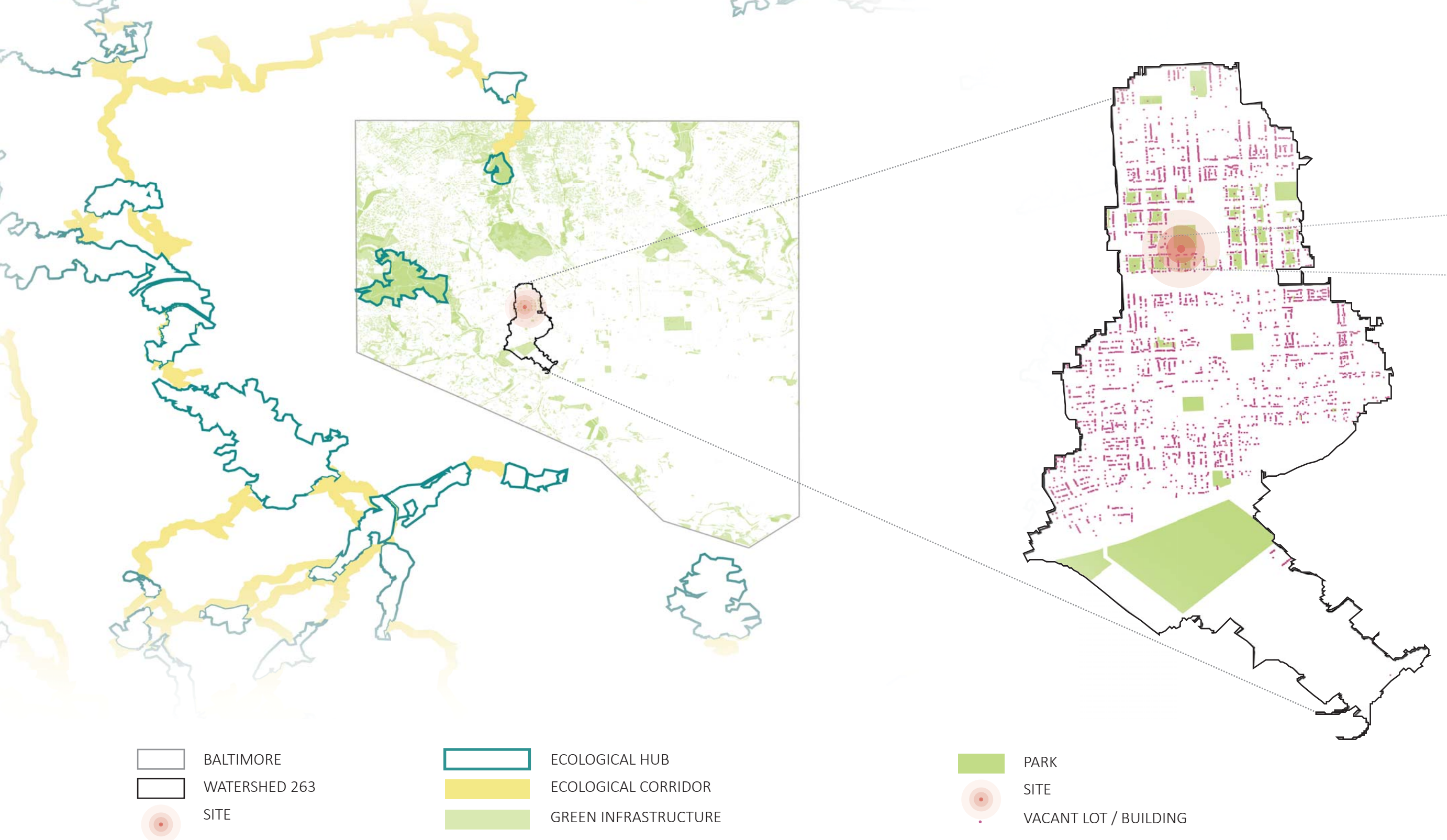


HARLEM PARK INNOVATING A COLORFUL FUTURE



ECOLOGICAL + SOCIAL ABANDON

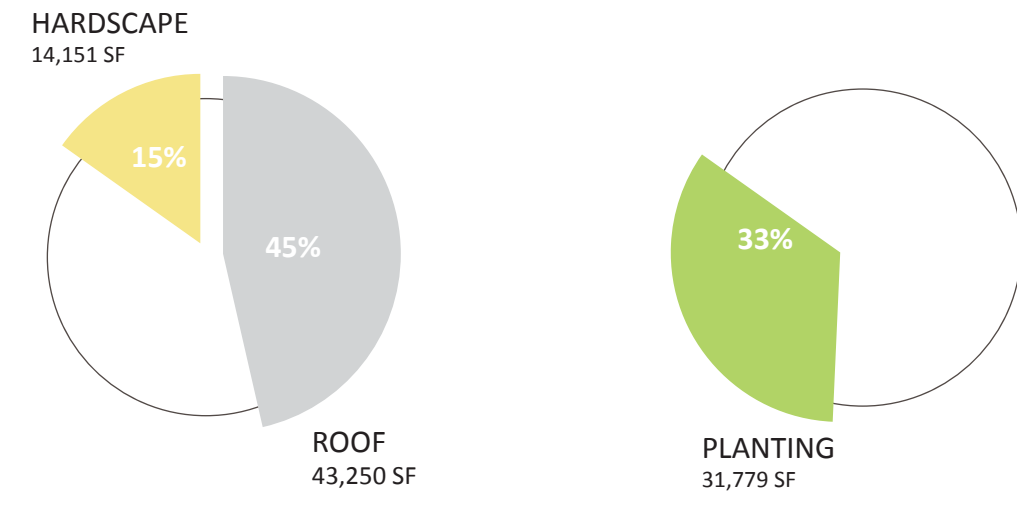
Baltimore is ecologically disconnected from the state of Maryland. There is a lack of ecological hubs and corridors in both Baltimore and in Watershed 263. Although there is a lack of ecological cohesiveness, Watershed 263 has some existing park space. Most of the park space in the watershed lies in Harlem Park and its surrounding area. It is important to note the amount of vacancies in the watershed and their adjacency to green infrastructure.

INTEGRATING NEIGHBORHOOD

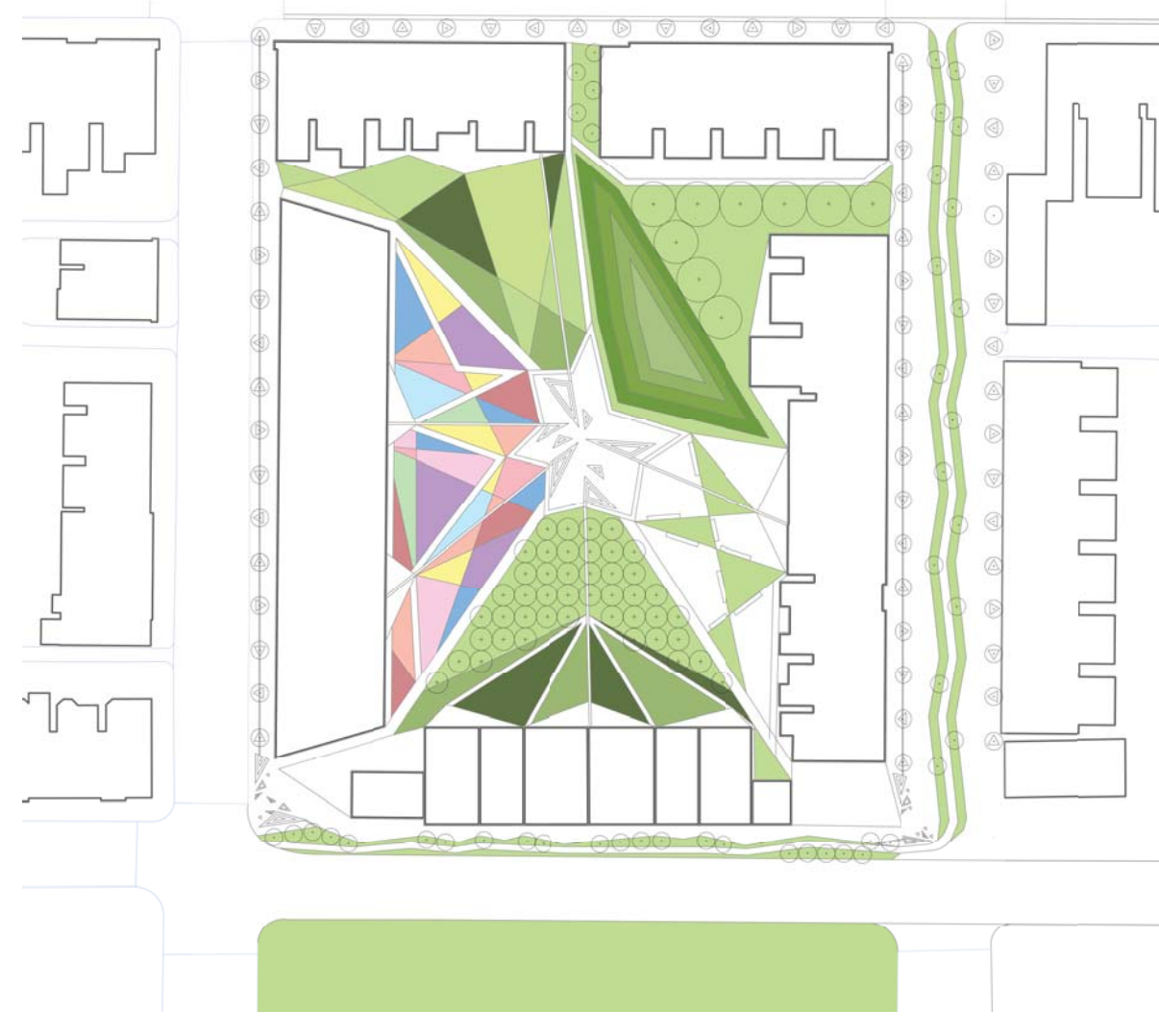
CIRCULATION + HARDSCAPE



- MAIN CONNECTION**
The unifying pattern amongst all blocks
- INTEGRAL CIRCULATION**
Encourages exploration and provides connections for residents
- NODES**
The Stormwater Plaza, Beer Garden, and Market Plaza
There are different types of public and private hardscapes within the design. These spaces are to encourage different levels of social interaction through ecological education.



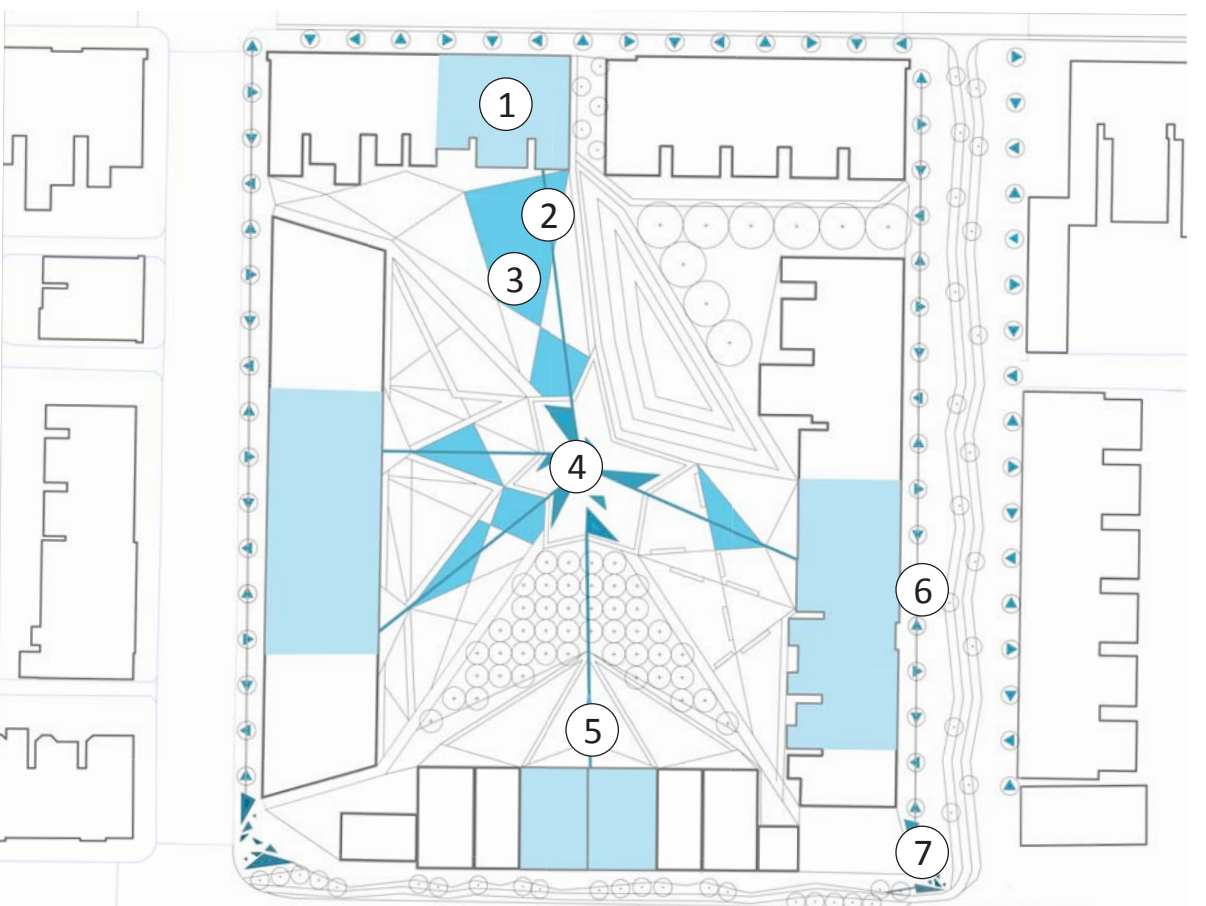
VEGETATION



- 173 TREES PLANTED
- 2928 SF AGRICULTURE
- 7562 SF NATIVE PERENNIALS
- 6320 SF NATIVE MEADOW GRASSES
- 14,969 SF NATIVE GROUND COVER
- 7% WATER COLLECTION 6,500 SF

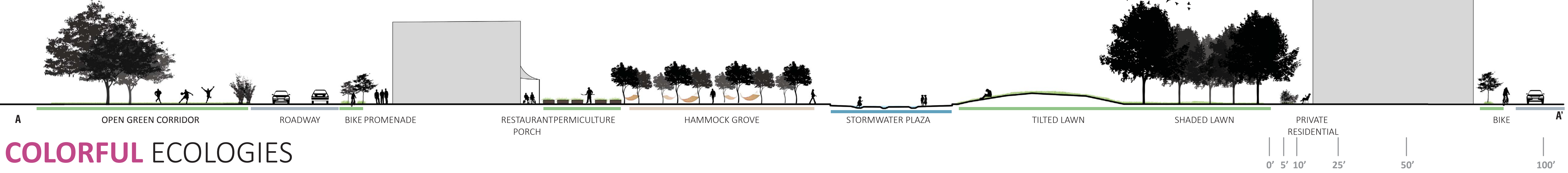
| BALTIMORE RAINFALL DATA | SITE RAINFALL DATA |
|-------------------------|------------------------|
| 2.6" 1 YR STORM | 36,558 SF ROOF AREA |
| 3.2" 2 YR STORM | 93,149 SF 1 YR RUNOFF |
| 5.1" 10 YR STORM | 114,645 SF 2 YR RUNOFF |

STORMWATER CIRCULATION

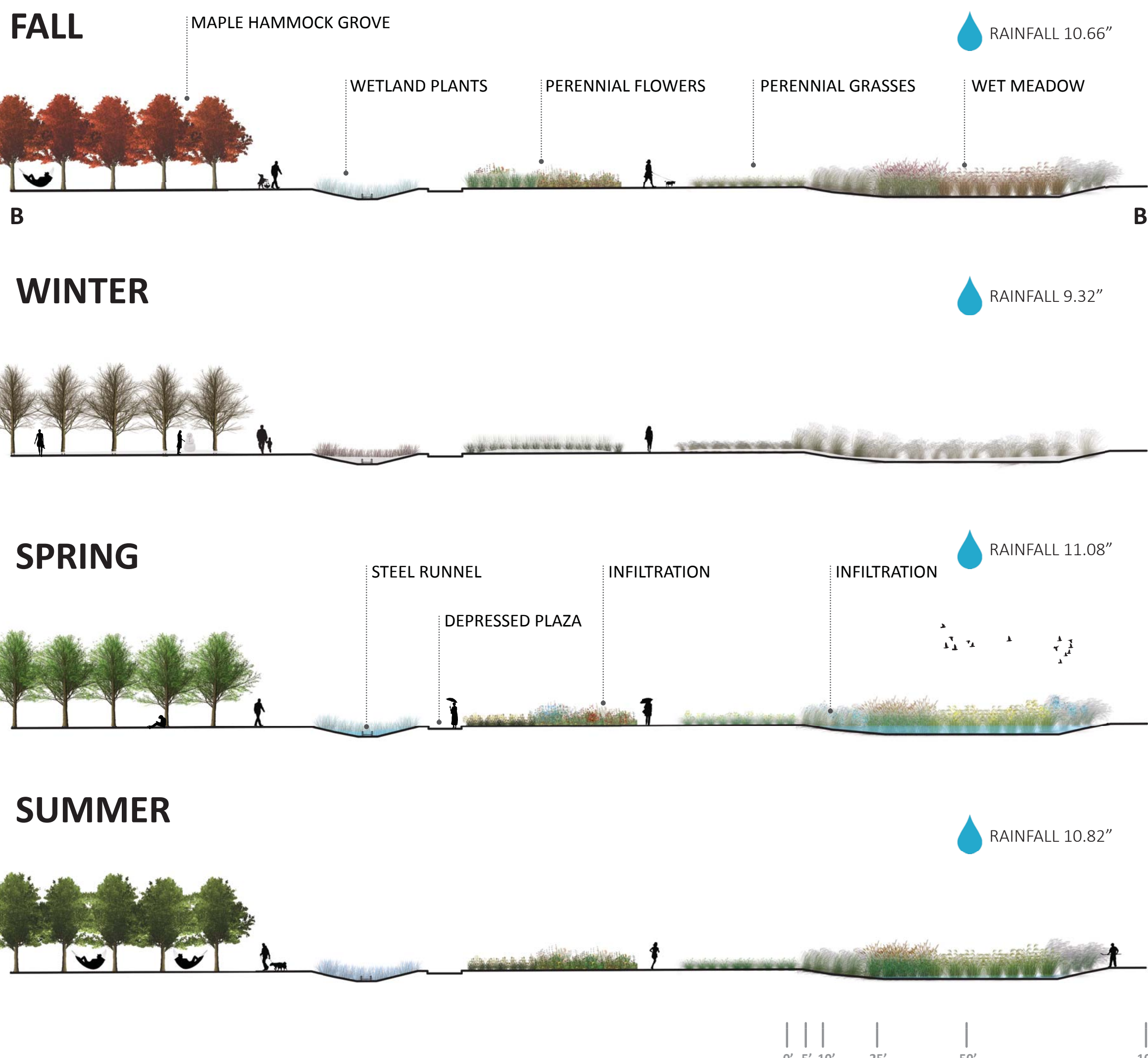


- ROOF COLLECTION
COLLECTING 15,520 SF RUNOFF (1 YR)
- RUNNEL TRANSPORTATION
- GARDEN FILTRATION + INFILTRATION
HOLDS 10,200 SF
- PUDDLE COLLECTION / PLAZA DEMONSTRATION
HOLDS 6,500 SF
- AGRICULTURE CISTERN
HOLDS 5,000 SF
- STREET TREE FILTRATION
- STREET CORNER PUDDLES

SITE SECTION A-A'



COLORFUL ECOLOGIES



KALEIDOSCOPE CONCEPT

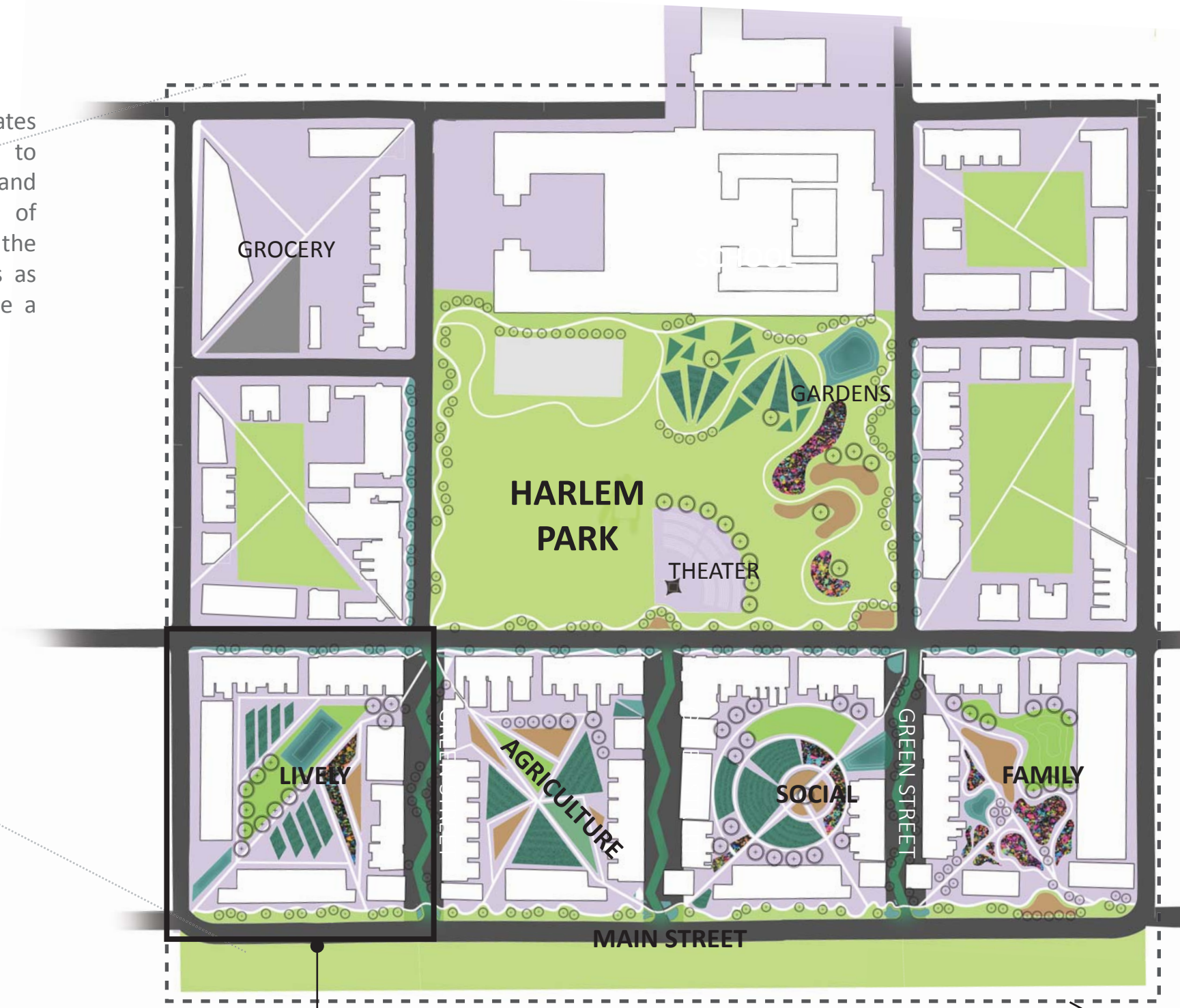
The Kaleidoscopic design for a primarily vacant block within Harlem Park envisions a new colorful and bright future for this neighborhood, in terms of its ecology and social networks. A kaleidoscope is a cylinder with mirrors containing loose, colored objects such as beads or pebbles and bits of glass. As the viewer looks into one end, light entering the other end creates a colorful pattern, due to the reflection of the mirrors. While this vision is organized by a unifying pattern, the multiple beads and colors shift as the kaleidoscope twists, creating several unique experiences within. The previously designed master plan included a unifying pattern of inner block parks joined by integrated pathways that were intended to create an ecological corridor through the entire Watershed. This detailed block design expresses the unique potential for each individual block within the masterplan. The Kaleidoscopic pattern incorporates several ecological interventions in a psychedelic way, introducing innovative green infrastructure such as stormwater management and native planting strategies to all demographics. A social hub is created by the nature of the Main Street, which invites in new demographics and liveliness to the previously socially and ecologically neglected landscape. The utilization of color, unique forms, and engaging social spaces provides a new ecological experience that will be precedent for future blocks in Baltimore neighborhoods.

- SOCIAL HUB / SITE
- ECOLOGICAL HUBS
- CONNECTIONS / CORRIDORS
- MASTERPLAN
- FUTURE DEVELOPMENT

PLANNING

The planning scale design incorporates the geometry of the kaleidoscope to expand throughout the watershed and eventually into other regions of Baltimore. Each phase will address the redesign of abandoned park spaces as ecological hubs and therefore create a new ecological corridor.

- PHASE 1 / 5 YEARS
- PHASE 2 / 10 YEARS
- PHASE 3 / 20 YEARS
- ECOLOGICAL HUB
- GREEN STREET
- MAIN STREET / HUB



PHASE 1

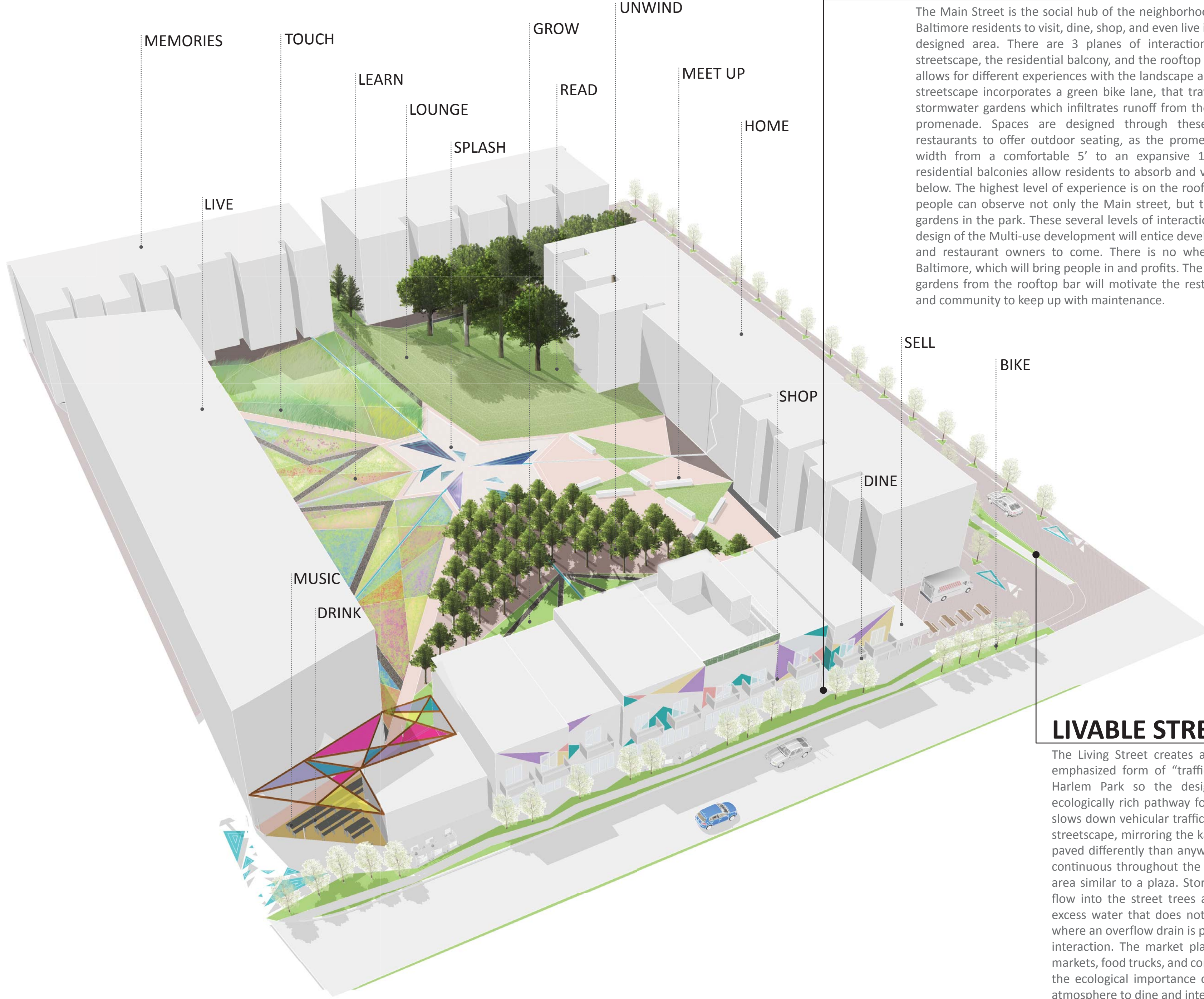
The Phase 1 Masterplan includes the design of 4 different blocks that cater to different demographics ranging from the elderly to families and young adults. There will be new development along the Main Street, however, row houses closest to Harlem Park will be restored in order to maintain a historical presence in the neighborhood. The vision entails paths that connect through each block, which will be implemented through out the entire masterplan to promote community connections and future redevelopment.

MASTERPLAN



HARLEM PARK INNOVATING A COLORFUL FUTURE

PROGRAM FOR A NEW AGE

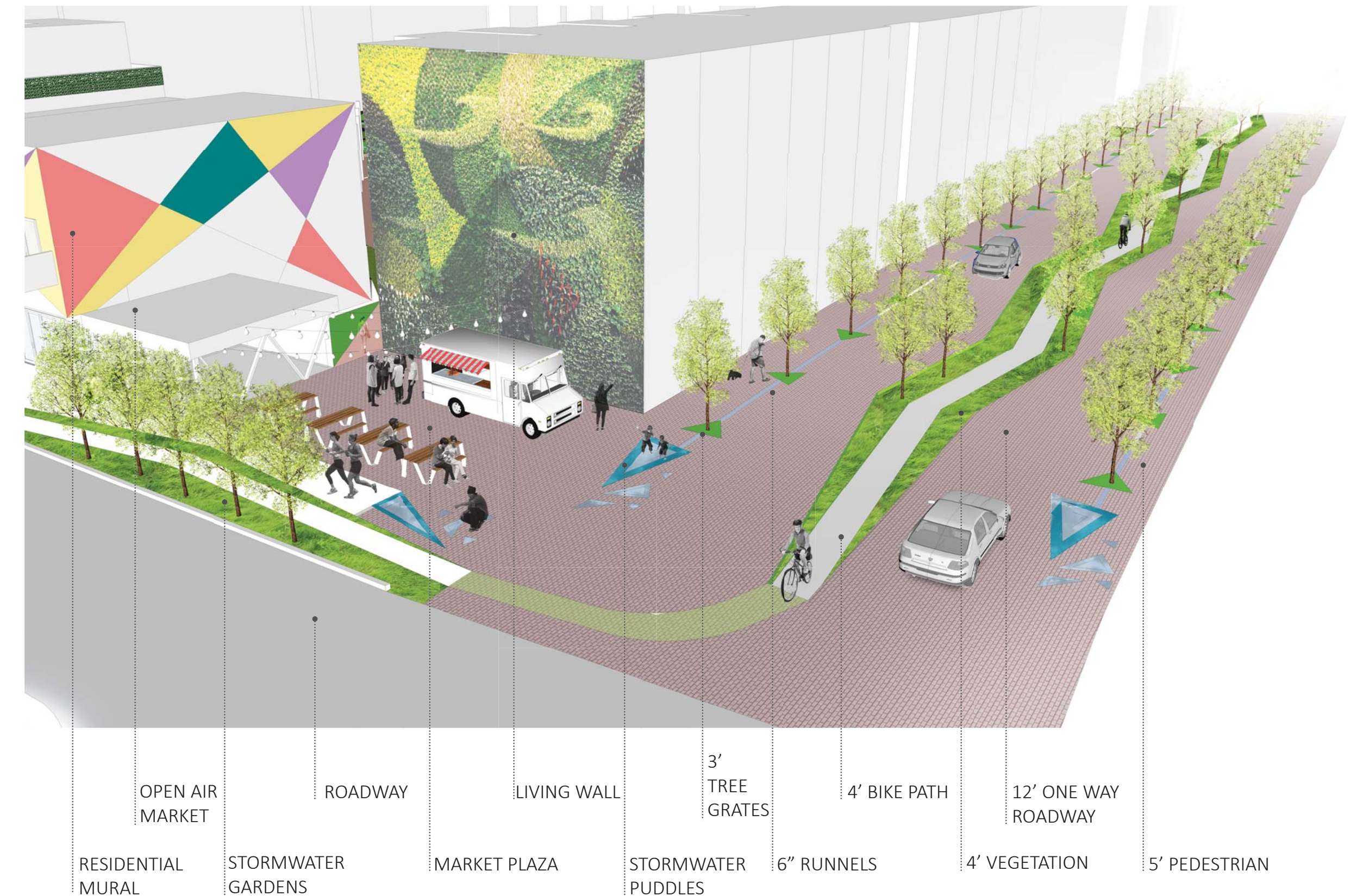


MAIN STREET

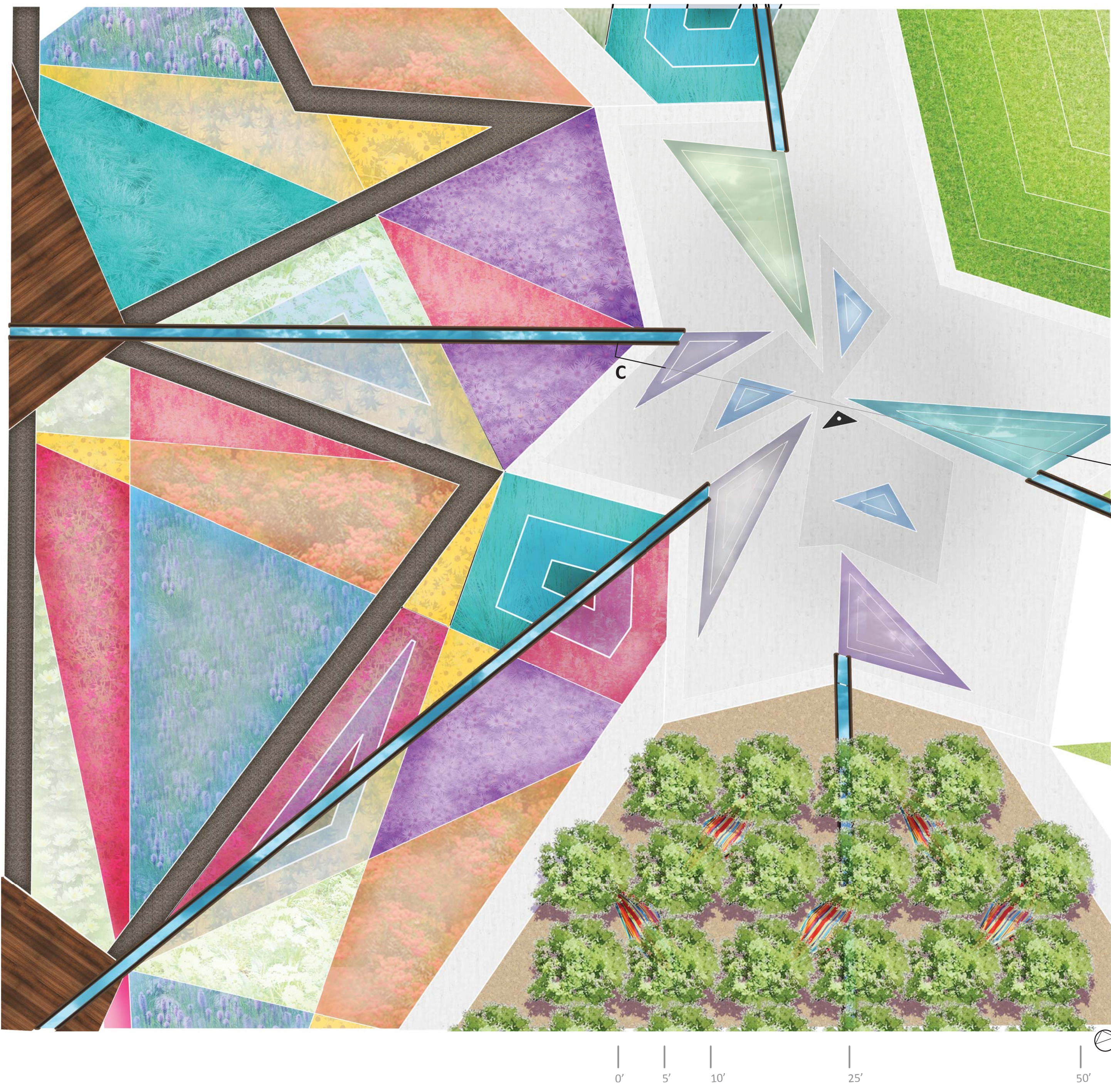
The Main Street is the social hub of the neighborhood and attracts Baltimore residents to visit, dine, shop, and even live in this uniquely designed area. There are 3 planes of interaction present, the streetscape, the residential balcony, and the rooftop bar. Each level allows for different experiences with the landscape and people. The streetscape incorporates a green bike lane, that traverses through stormwater gardens which infiltrates runoff from the roadway and promenade. Spaces are designed through these gardens for restaurants to offer outdoor seating, as the promenade varies in width from a comfortable 5' to an expansive 10' space. The residential balconies allow residents to absorb and view the action below. The highest level of experience is on the rooftop bar, where people can observe not only the Main street, but the extravagant gardens in the park. These several levels of interaction and colorful design of the Multi-use development will entice developers to invest and restaurant owners to come. There is no where like this in Baltimore, which will bring people in and profits. The visibility of the gardens from the rooftop bar will motivate the restaurant owners and community to keep up with maintenance.

LIVABLE STREET

The Living Street creates a street in which people are the most emphasized form of "traffic". The street acts as a connection to Harlem Park so the design incorporates a safe, unique, and ecologically rich pathway for pedestrians. The 12' green cycle lane slows down vehicular traffic as it zig zags through the middle of the streetscape, mirroring the kaleidoscopic design. The entire street is paved differently than anywhere else in the neighborhood and it is continuous throughout the street, suggesting a pedestrian focused area similar to a plaza. Stormwater from the roadway is graded to flow into the street trees and green bike lane. Runnels transport excess water that does not infiltrate into the stormwater puddles where an overflow drain is present and water is held for viewing and interaction. The market plaza is a flex space for outdoor farmers markets, food trucks, and community events. The living wall indicates the ecological importance of the area while setting an interesting atmosphere to dine and interact as well as an enticing visual feature.



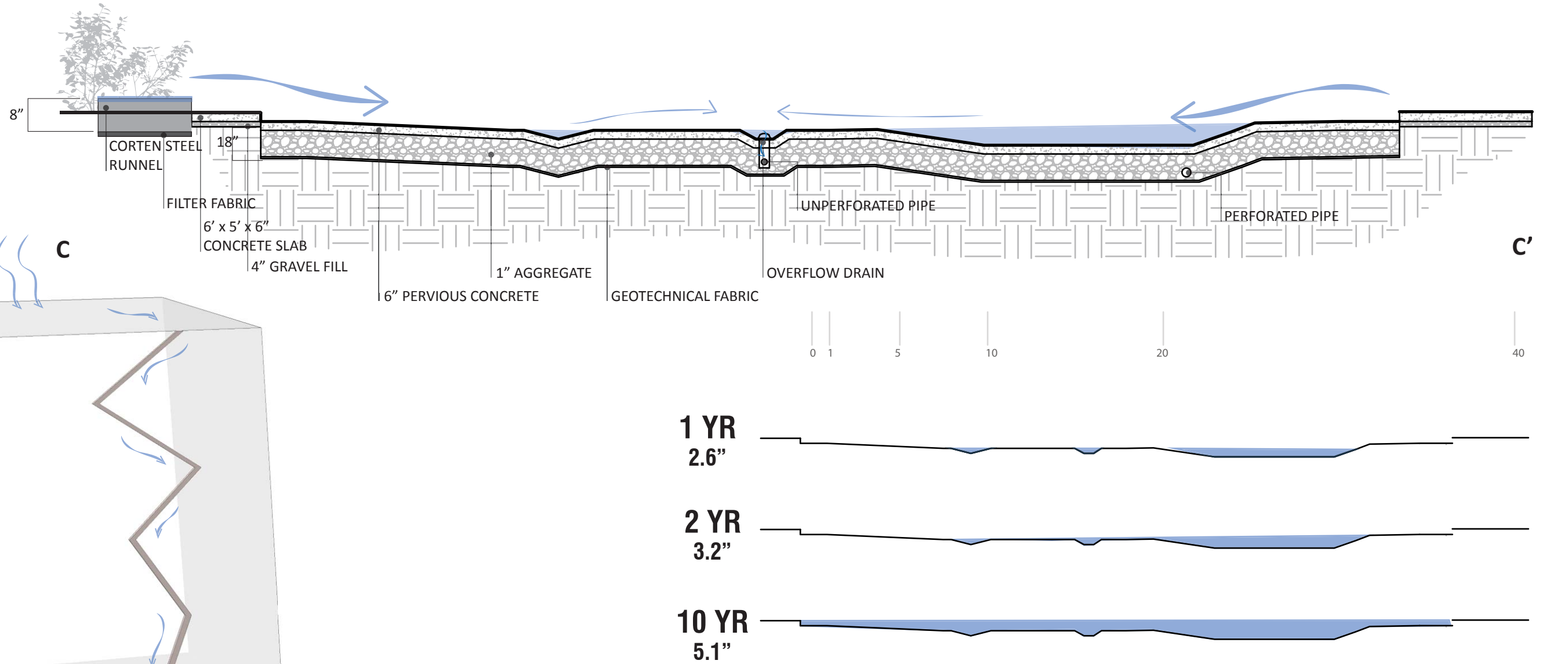
INTERACTIVE STORMWATER



NATIVE PALETTE

- New York Aster**
Symphoricarpos novi-belgii
- Cardinal Flower**
Lobelia cardinalis
- Common Boneset**
Eupatorium perfoliatum
- Black Eyed Susan**
Rudbeckia hirta
- Butterfly Milkweed**
Asclepias tuberosa
- Dense Blazing Star**
Liatris spicata
- Canada Lily**
Lilium canadense
- Blue Sedge**
Carex flacca
- White snakeroot**
Asteraceae
- Little Bluestem**
Schizachyrium scoparium
- Fire Pink**
Silene virginica

PLAZA DETAIL C-C'



STORM EVENTS

The plaza is designed to address more than the typical designed storm. During a major rain event the plaza fills up completely. After the storm, water slowly infiltrates through permeable pavement in the puddles but the overflow drain addresses the rest of the plaza.

JOURNEY OF WATER

The movement of water is a visual experience in the park. Water is transported from the roofs through the gardens to infiltrate and clean and into the plaza where people may interact with it in a new way.

KALEIDOSCOPIIC DETAILS



BEER GARDEN EXPERIENCE

