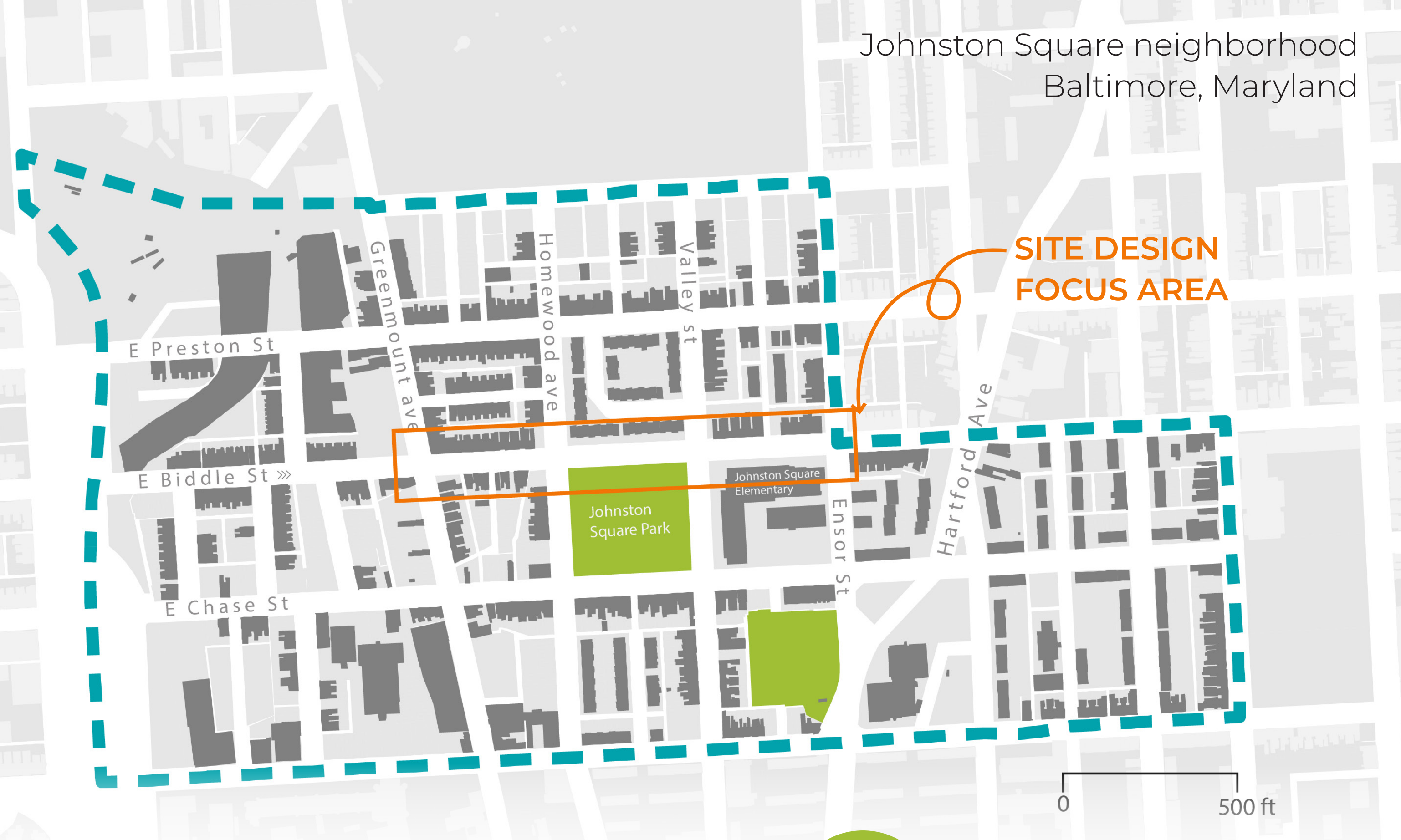
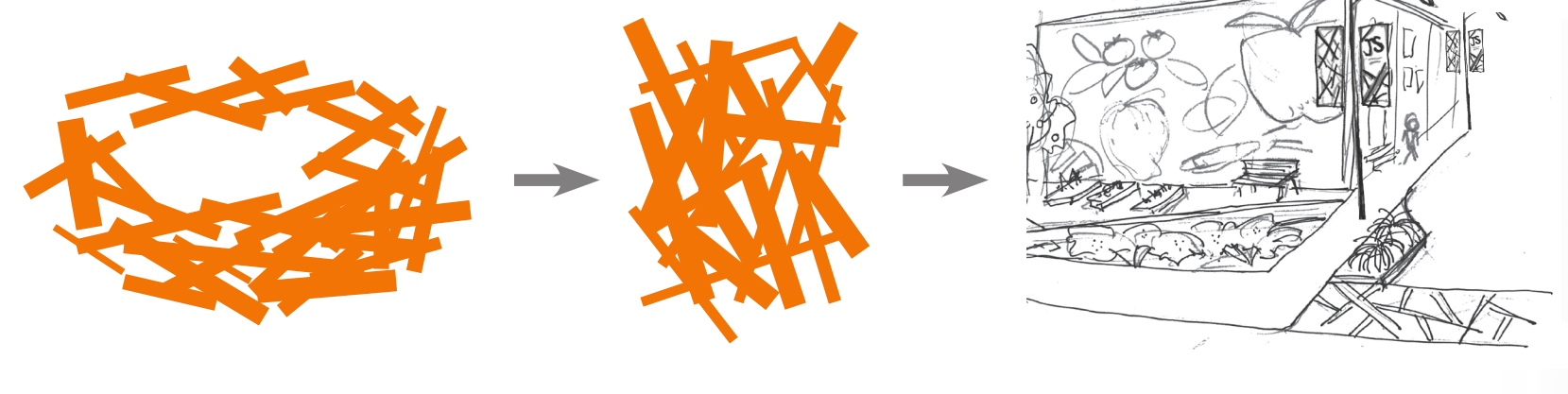


Welcome to JOHNSTON SQUARE

Zoe Roane-Hopkins | Spring 2018

AT HOME IN YOUR NEST

The concept of a nest inspires and informs the visual identity of Johnston Square. A nest is a home, a place of belonging and ownership. It is also a symbol of pride in the personal effort put in to the nest. Johnston Square neighborhood is a nest for its residence. The community takes pride in it and contribute time and effort into its spaces. The texture of the nest is abstracted to a pattern to be repeated in various ways to create a visual link throughout the neighborhood.



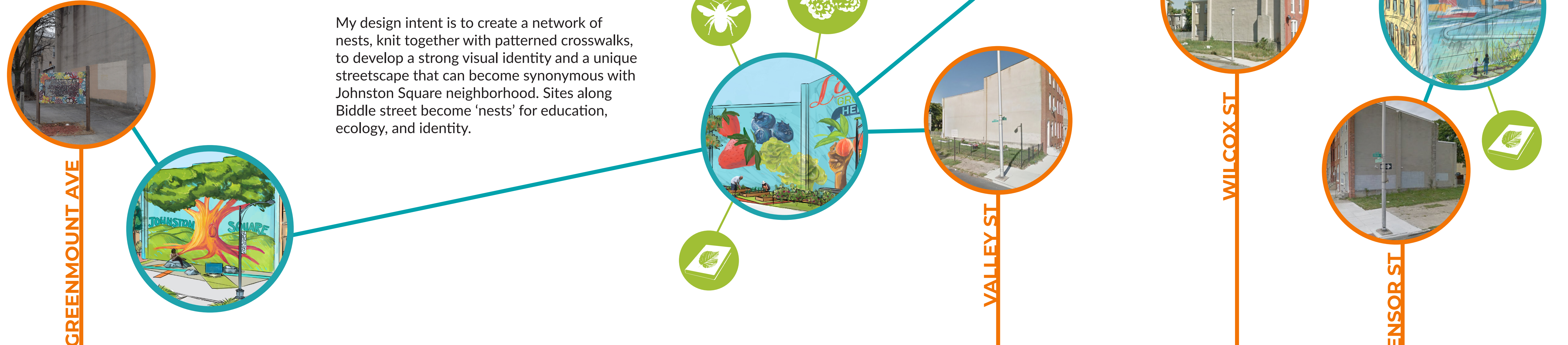
ECOLOGY & EDUCATION

Each site along Biddle Street is designed to add environmental education and ecological value. Multi-functional spaces provide outdoor teaching spaces, water conservation, pollinator habitat, and experimental garden plots.

- 3,900 ft²** outdoor education space
- 1,000 ft²** pollinator habitat
- 1,600 ft²** urban agriculture
- 330 gallons** rain water storage

MURAL NEST-WORK

My design intent is to create a network of nests, knit together with patterned crosswalks, to develop a strong visual identity and a unique streetscape that can become synonymous with Johnston Square neighborhood. Sites along Biddle street become 'nests' for education, ecology, and identity.



BRANDING

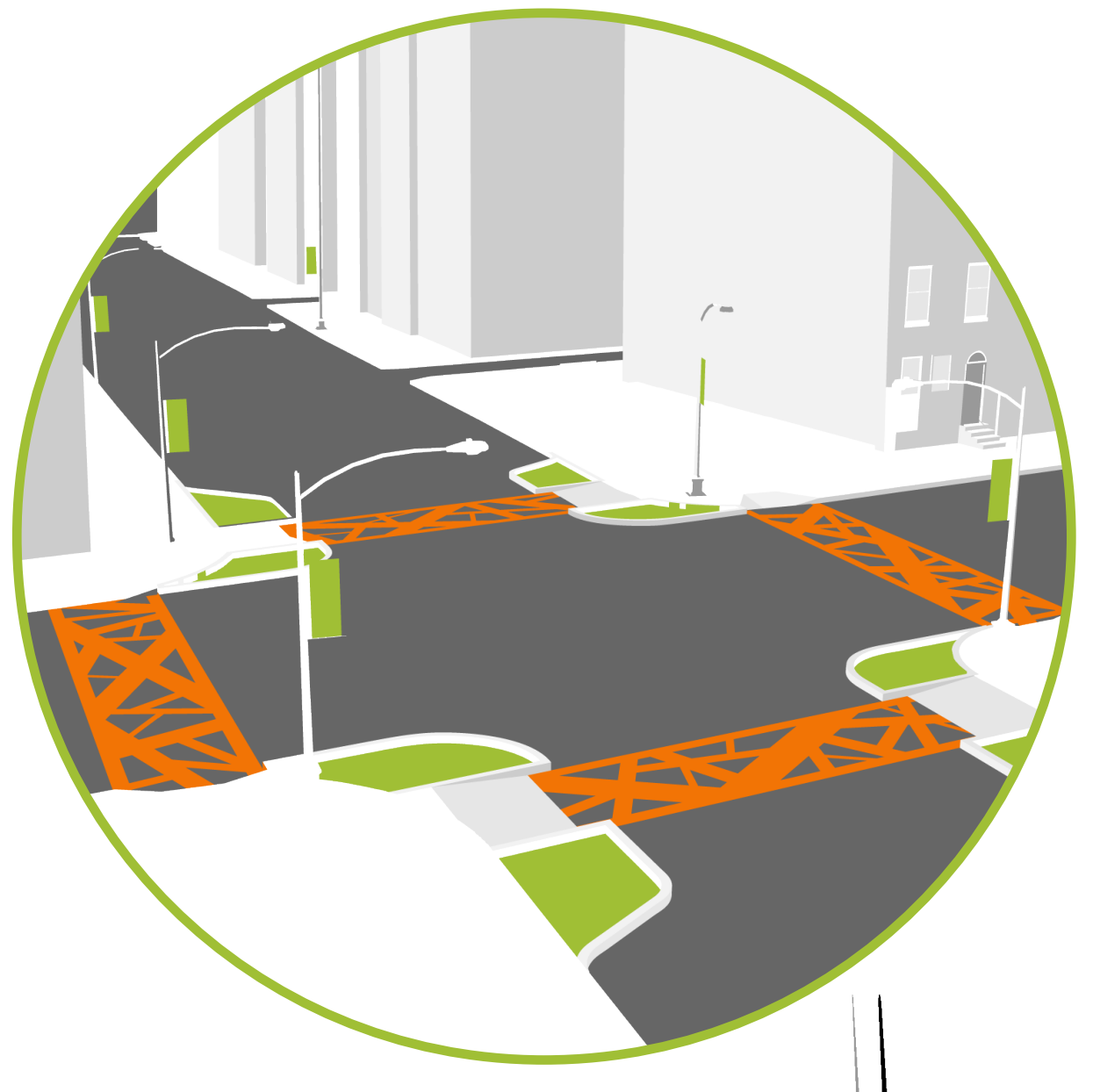
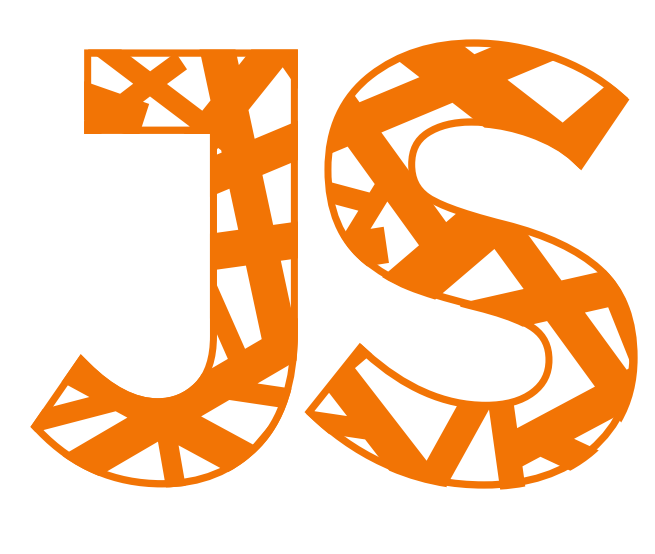
Banners can become a clear, identifying feature of a place. Creating Johnston Square banners using the nest crosshatch visually connects to other places where the pattern is used and clearly labels the neighborhood for visitors.

Planting Palette

- Prairie Dropseed** (*Sporobolus heterolepis*)
- Blue Fescue** (*Festuca glauca*)
- Blue Grama** (*Bouteloua gracilis* 'Blonde Ambition')

Bump-out planters with hardy grass add green to the street

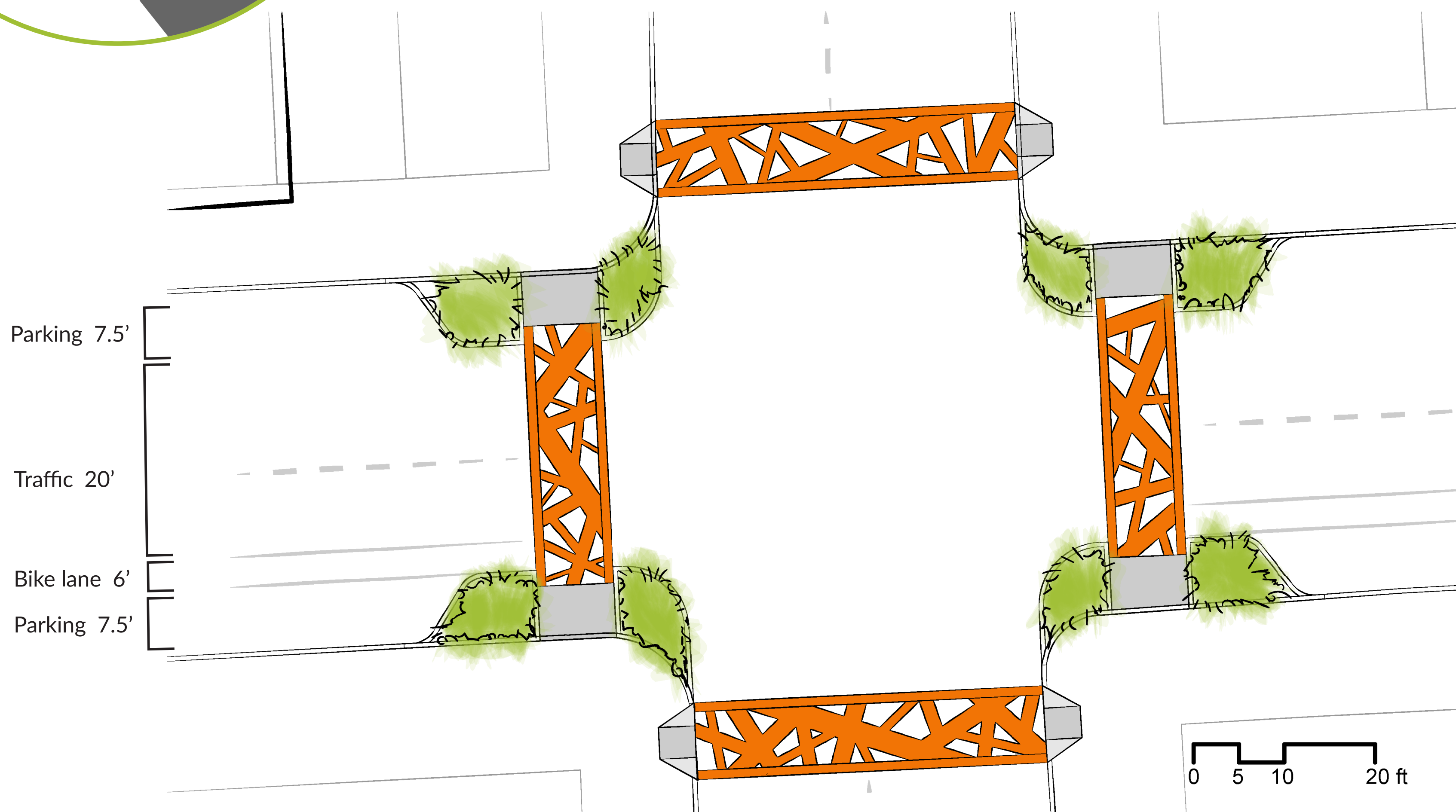
VISUAL IDENTITY



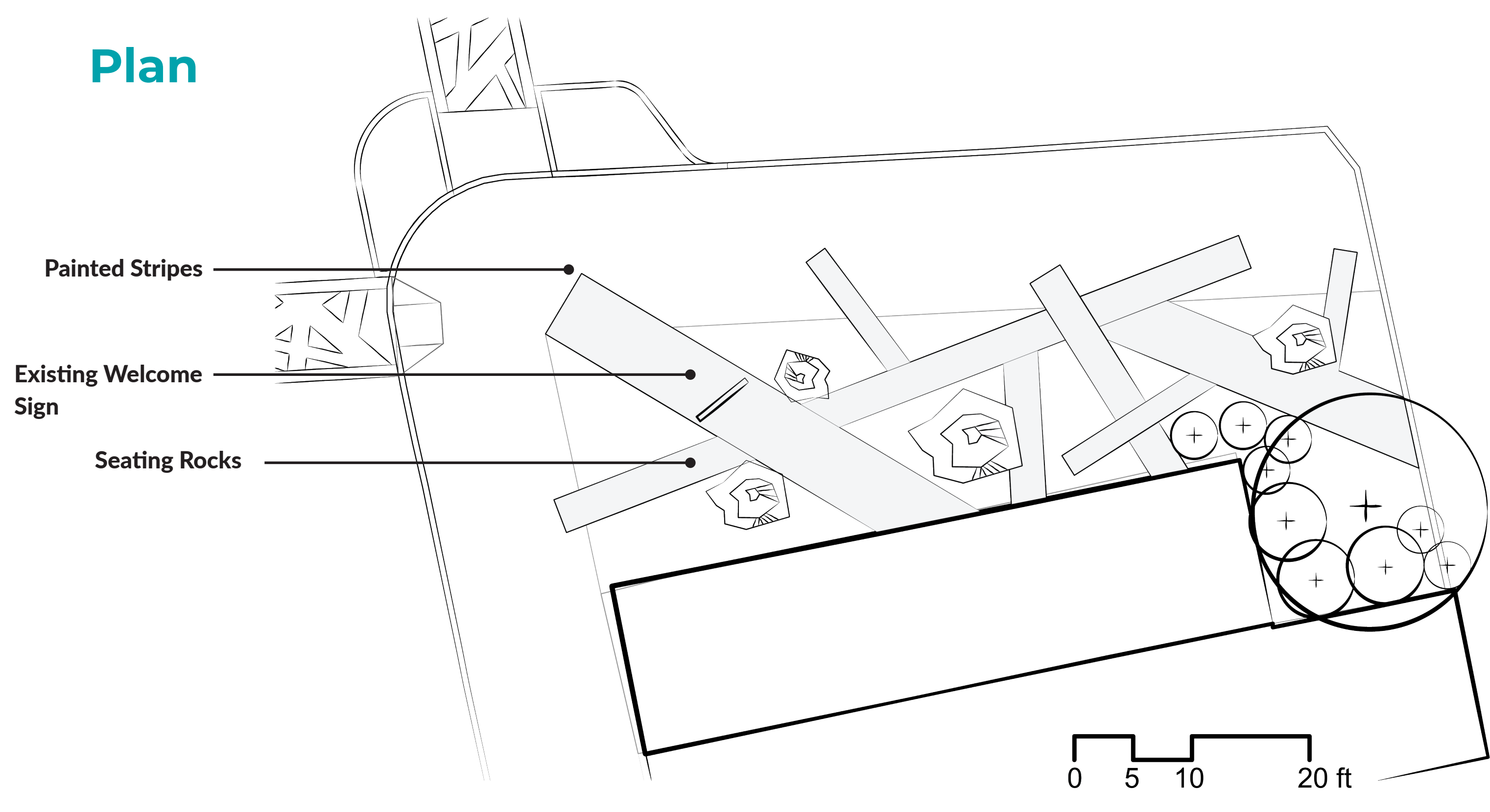
NESTED CONNECTIONS

Patterned crosswalks and planed bump-out can slow down traffic on the busy one-way street. Making a stronger pedestrian space is especially important in the blocks adjacent to the elementary school.

Crosswalks can be using a stencil and painted with aerosol water-based paints or painted on with acrylic latex-based paints.	Approximate square footage of crosswalks	Spray Paint needed	Acrylic Paint needed
	3,475 ft²	40 cans	25 Gallons



Plan



Greenmount Ave & Biddle St

DEEP ROOTS

This first "nest" on Greenmount Avenue functions as a welcome and rest area. Painted on the ground, colored stripes mimic the nest pattern. One stripe that juts out, drawing the eye toward the existing "Welcome to Johnston Square" mosaic sign. Large rocks provide places to rest and trees around the corner add greenery and shade. Among the plant species is Inkberry holly, an evergreen shrub that adds a splash of life to the winter landscape.

Planting Palette

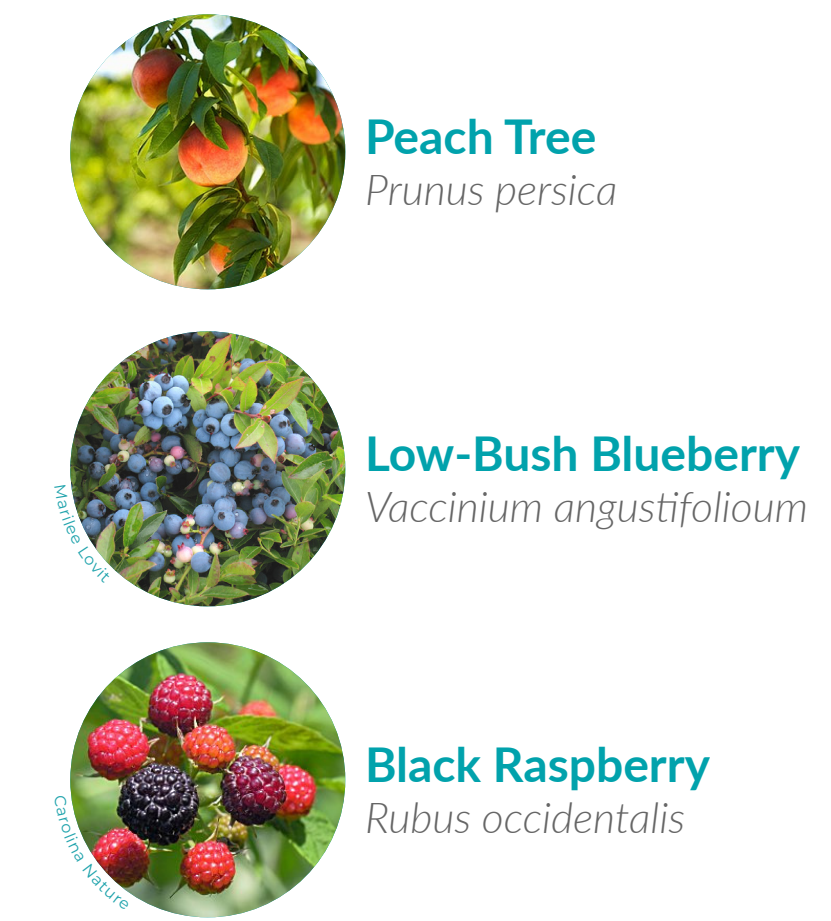


Valley St & Biddle St

LOVE GROWS HERE

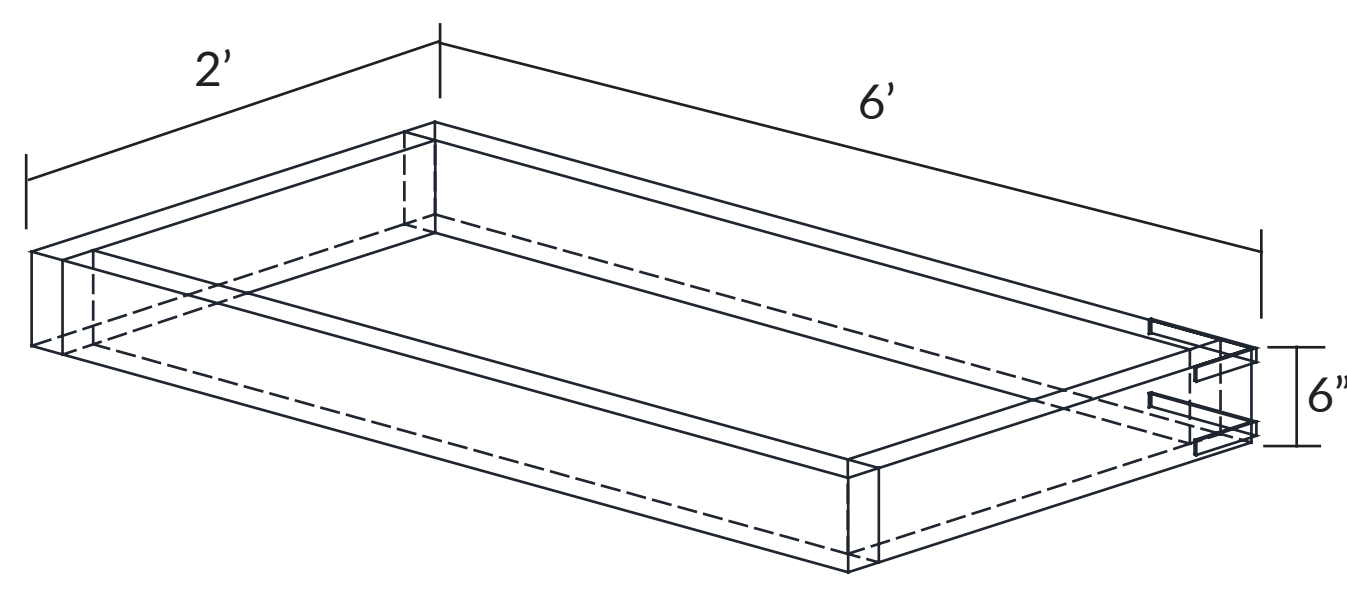
The urban agriculture nest is planted with edible fruit trees and shrubs that surround raised planting beds. The trees and shrubs create an enclosure without needing a fence. Planting beds are arranged to create sunny and shadier growing conditions. The path structure, still reminiscent of the nest cross-hatch, is also loosely based on the offset grid of a farm field.

Planting Palette



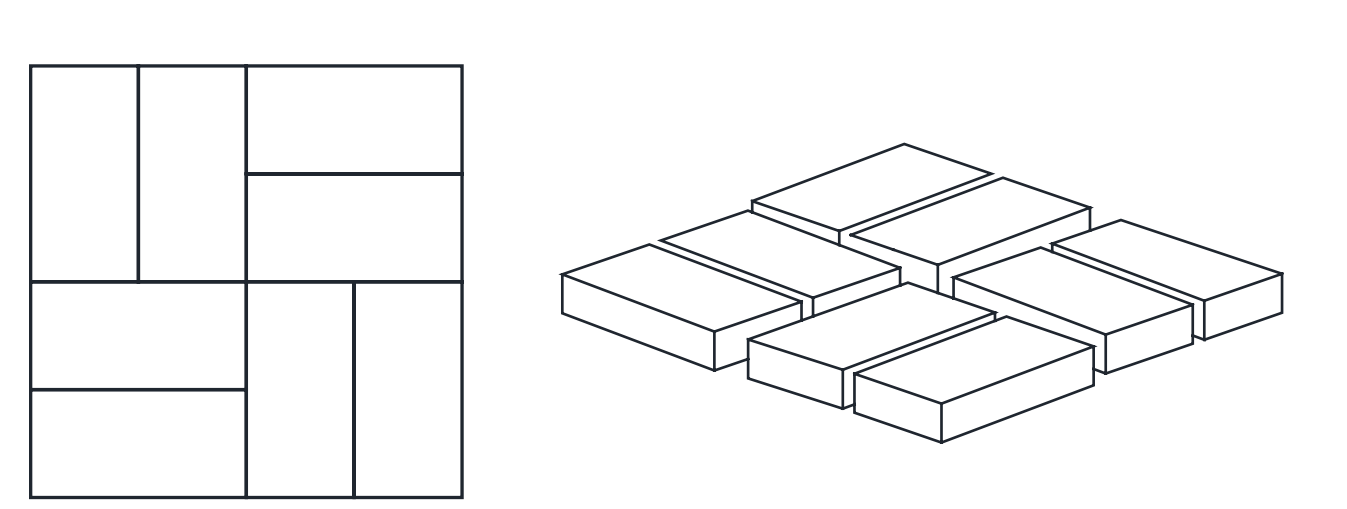
Coarse texture of the snowy egret nest informs site design seen in plan

Site Features



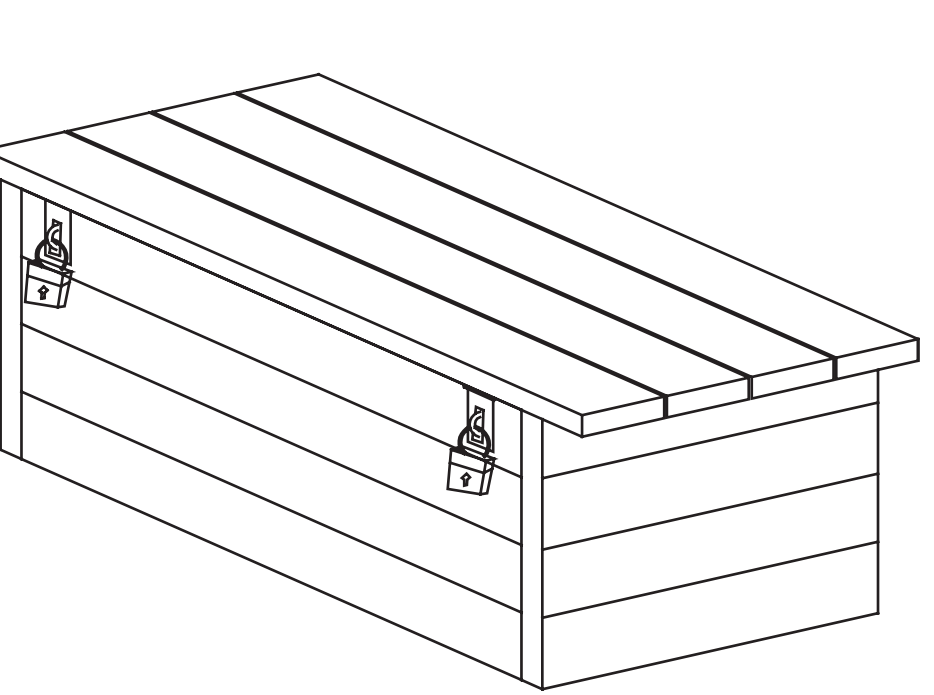
Planting Beds

2' X 6' X 6" raised planting beds are located in both sunnier and shadier locations to plant a variety of produce



Brick Pavers

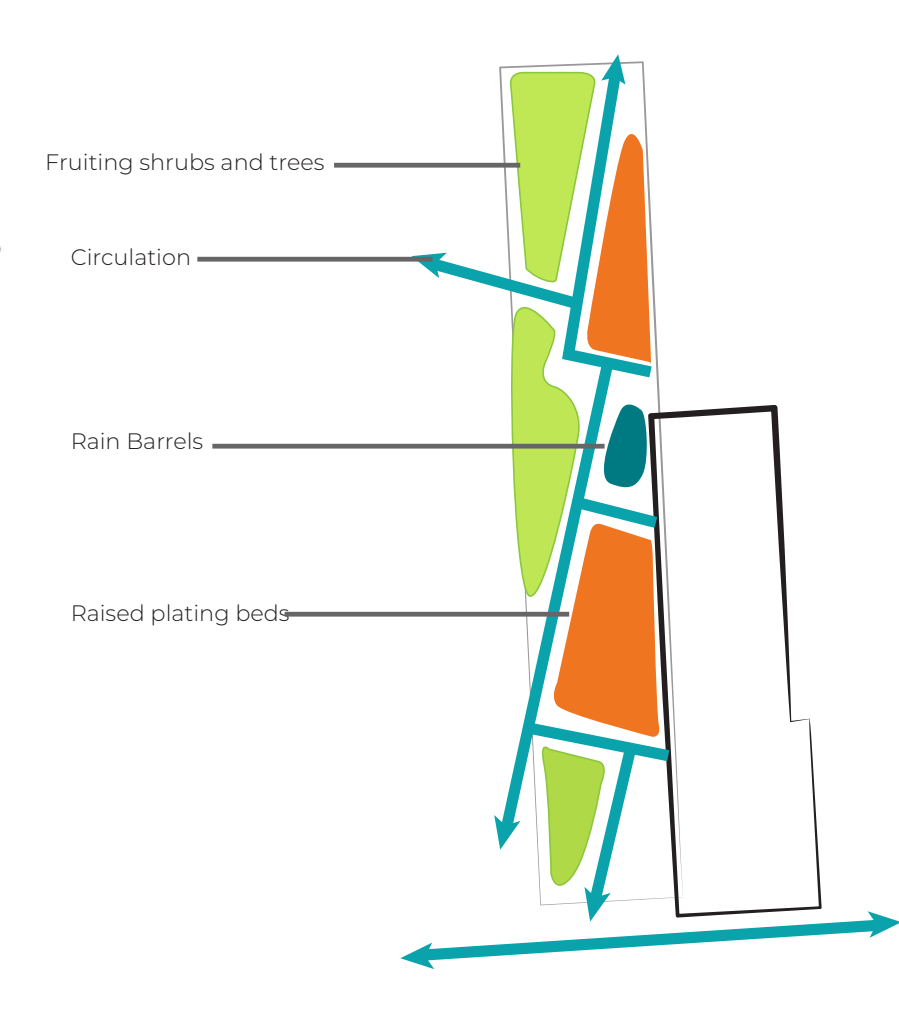
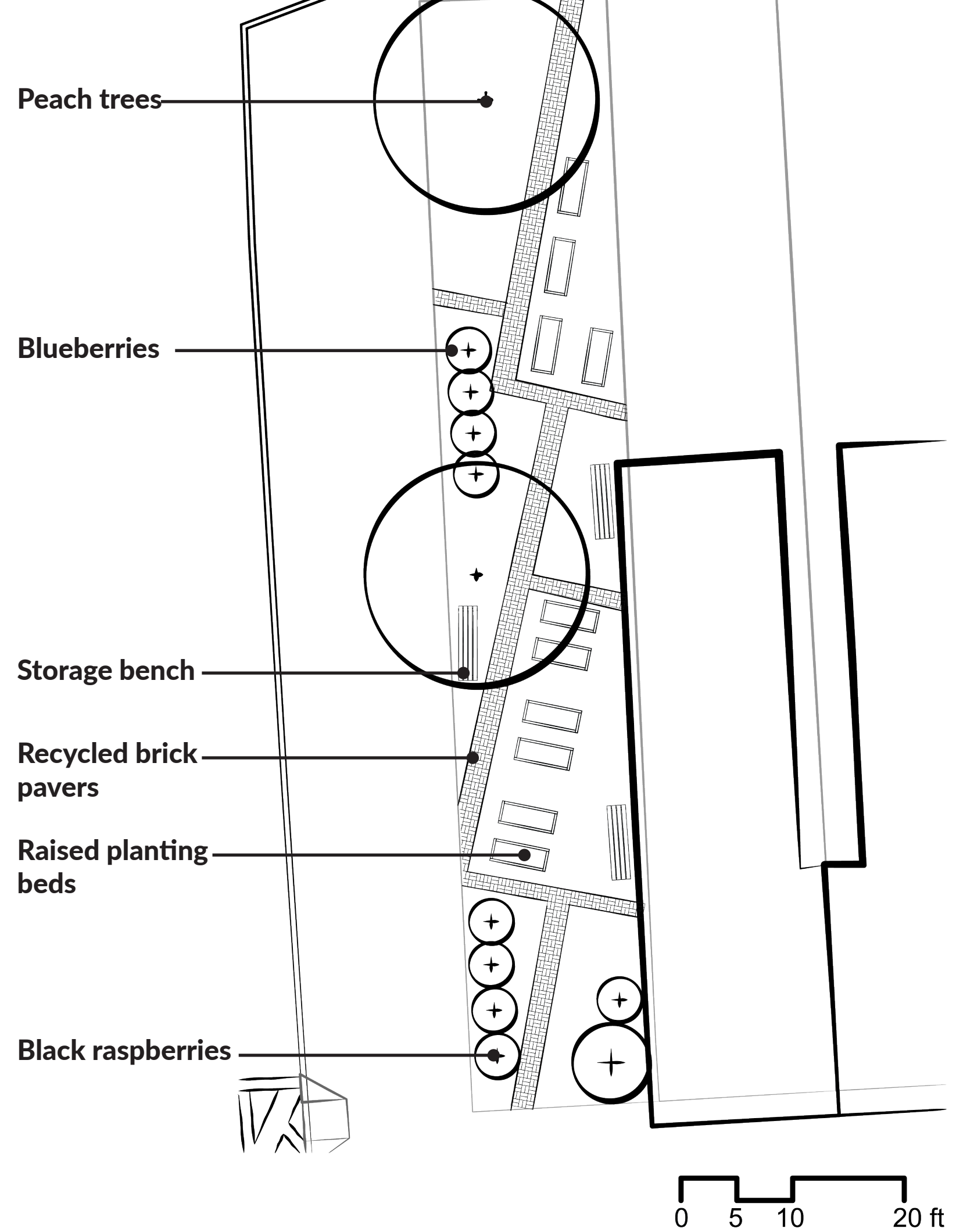
Recycled bricks in a basket weave pattern are emblematic of the farm field grid at the material scale



Bench

Seating benches double as storage for gardening equipment and can be secured with two locks

Plan

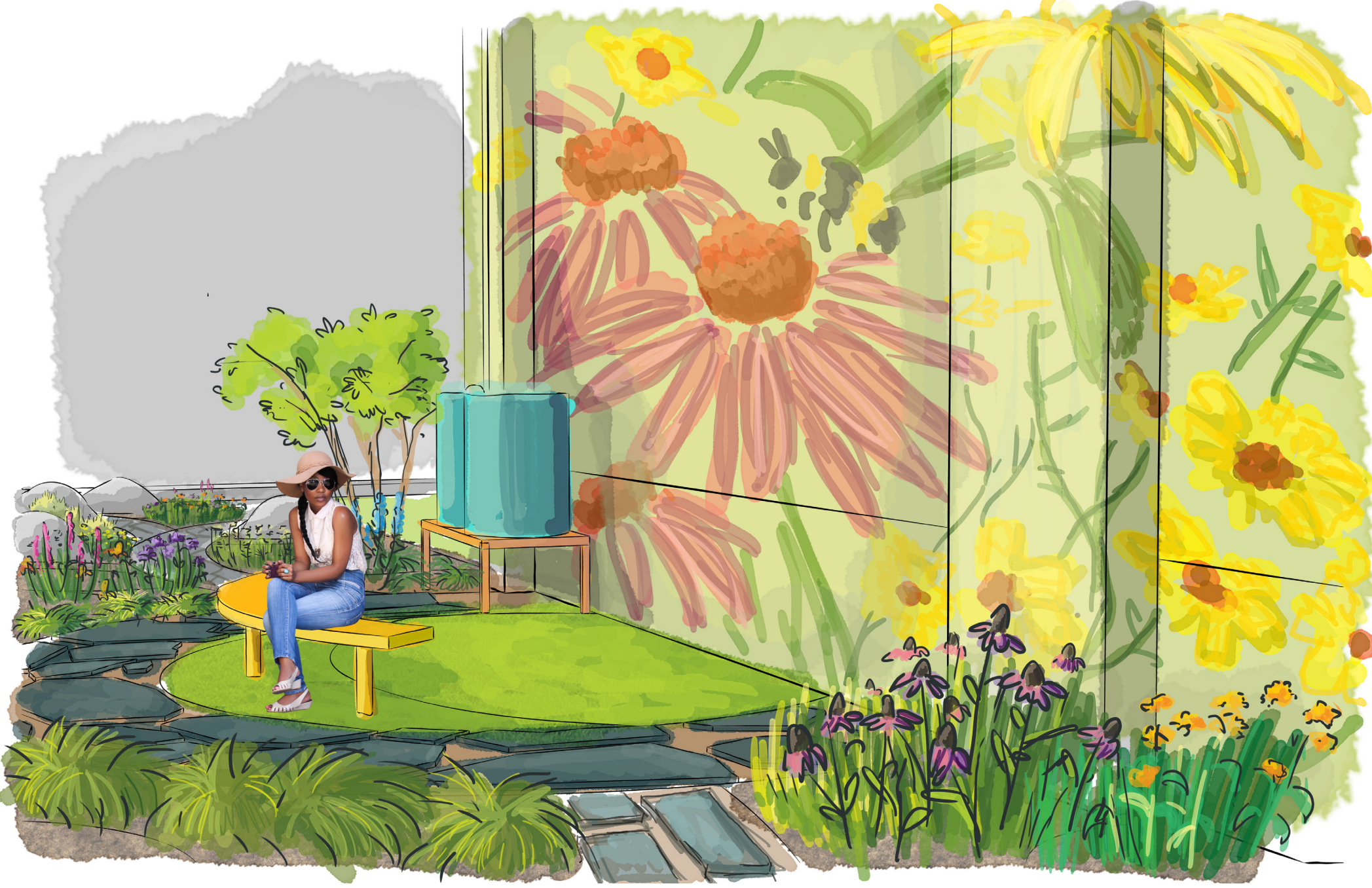
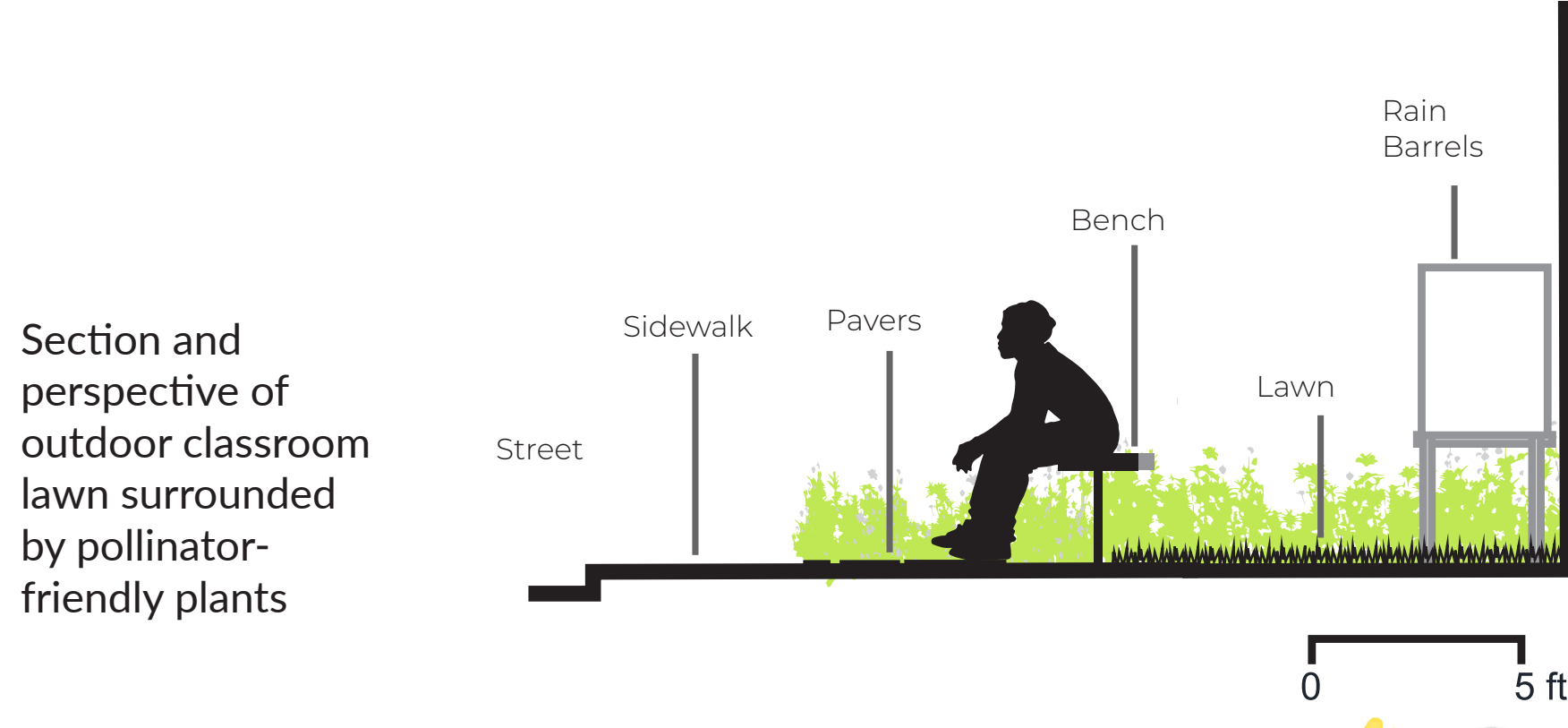




Wilcox St & Biddle St

BEE KIND

The pollinator nest, on Wilcox Street, is planted with perennial species that encourage bees, butterflies, and other pollinators to visit. This design is inspired by the nest of a humming bird, a tiny pollinating bird whose nest fits on a single branch. This is represented by the semicircle of pavers. The single 'branch' is the path coming from Biddle street that breaks off into multiple curving paths. Along these paths are seating rocks, intermingled with perennial planting beds. Within the circle of pavers is a curved bench and small patch of lawn that can function as an outdoor educational space for a small group of kids.



Planting for Pollinators

Trees/Shrubs



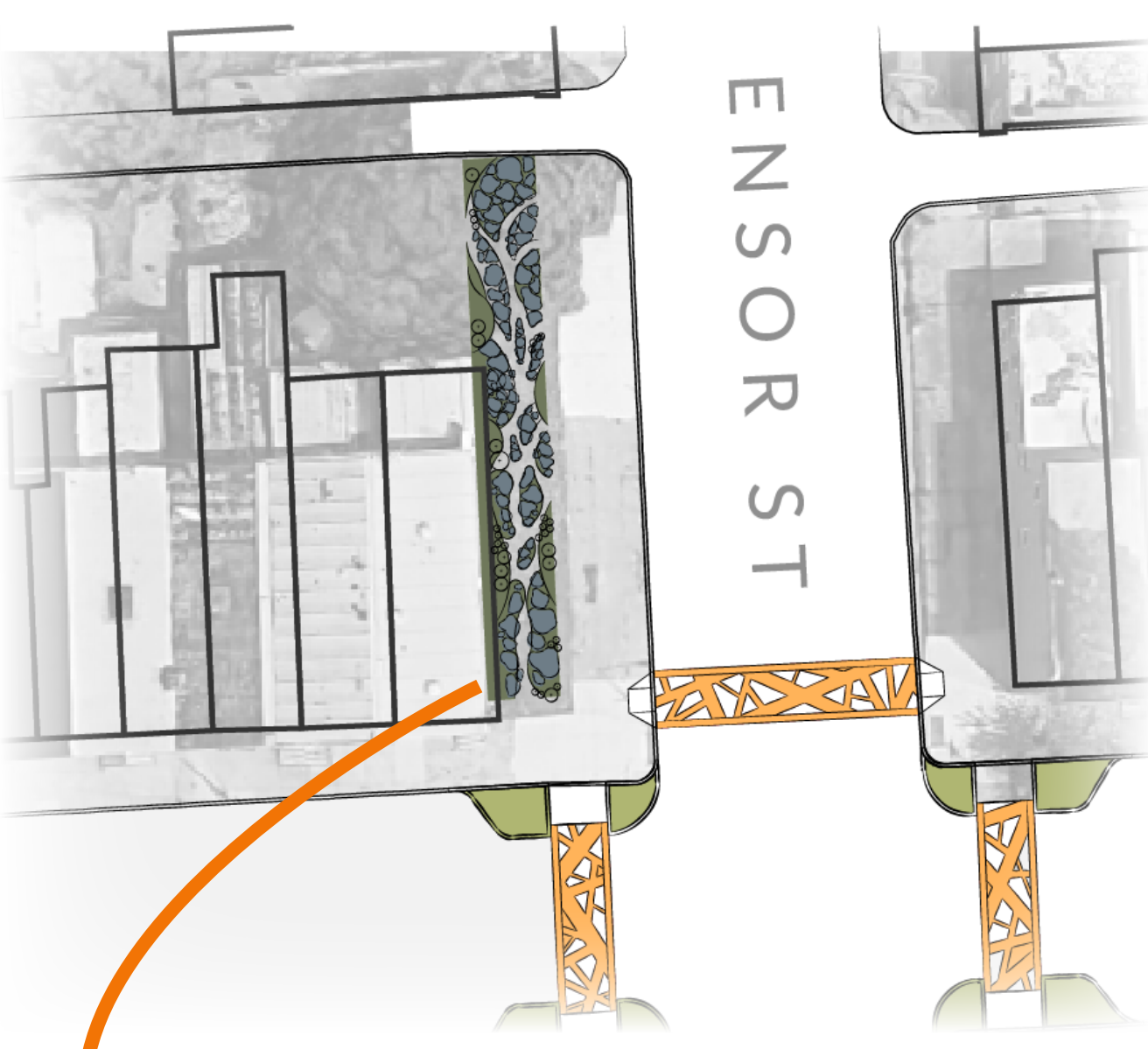
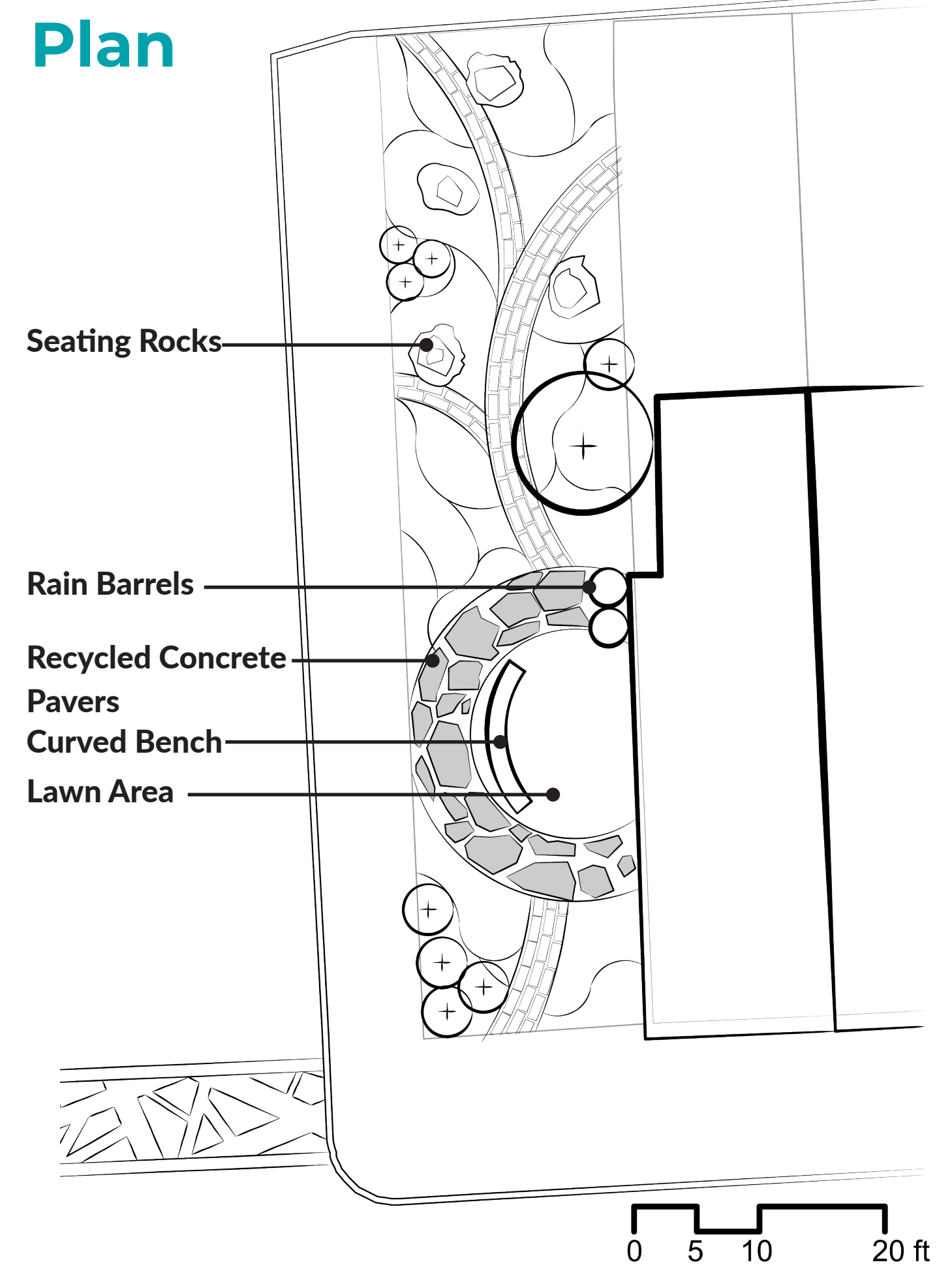
Perennials



Grasses



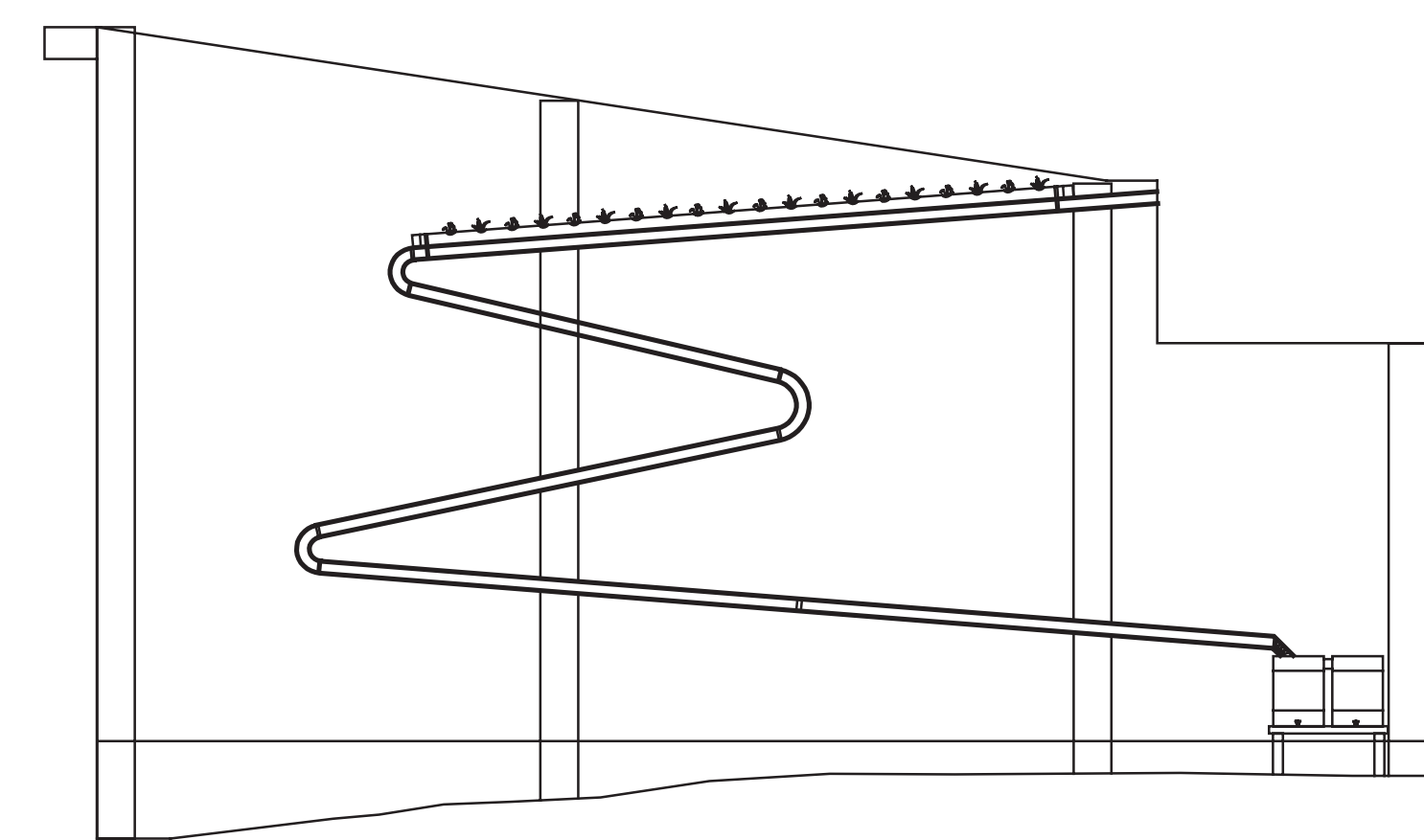
Plan



Ensor St & Biddle St

FOLLOW THE RAIN

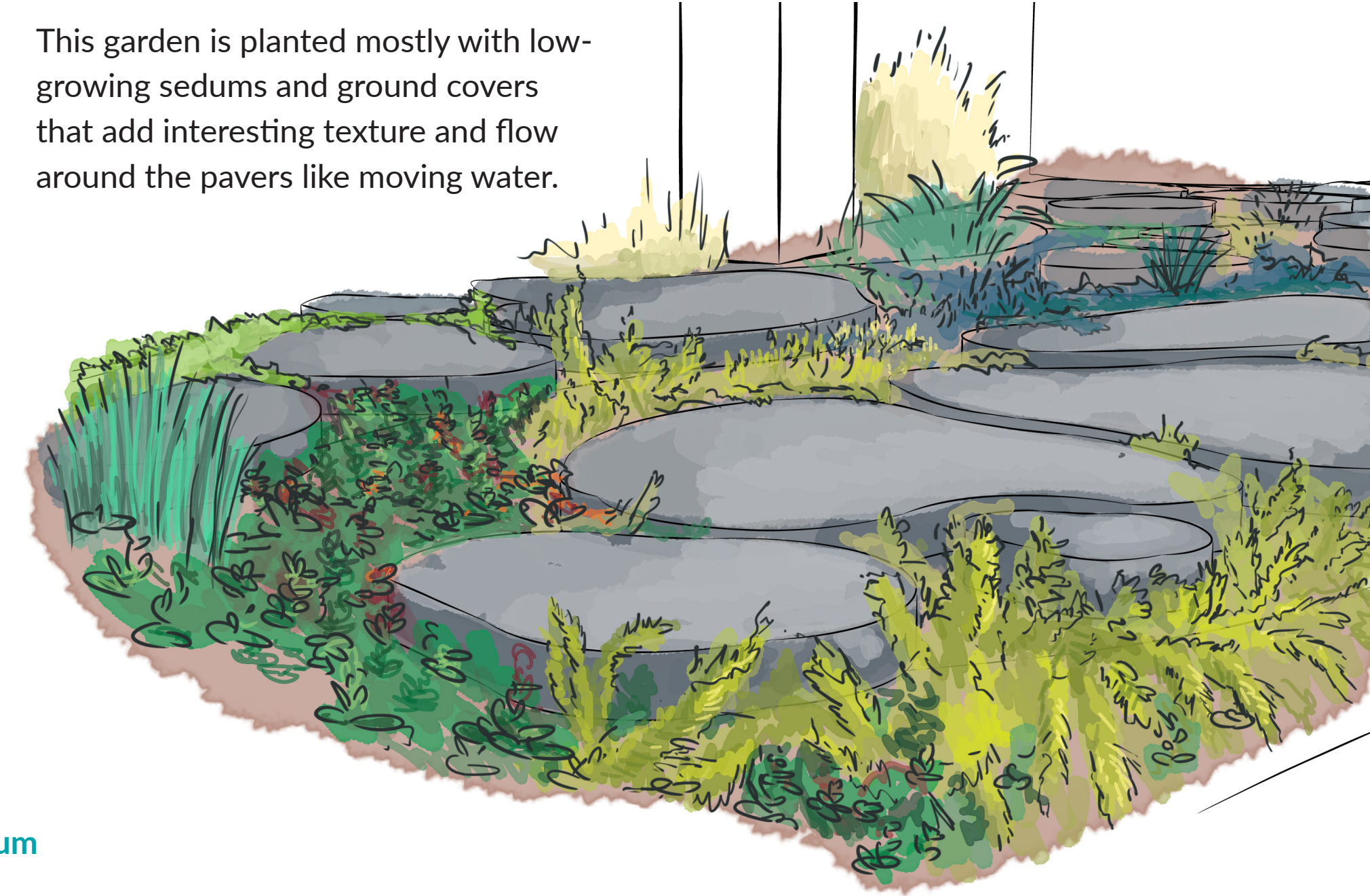
Although this lot is smaller than the others, the Ensor site works well as a demonstration for rain water cycling. A long pipe zigzags down the side of the wall, bringing water from the gutter to a large cistern below. It interacts with the mural to show the journey of a water drop moving from the forest to the city, and then 'emptying out' into the bay. Large pavers are surrounded by low-growing sedums and ground covers that flow through the cracks. This negative space created by the pavers mimics the coarse, flat nests of water birds like the native snowy egret. People can walk and jump across the pavers and observe the little world created by the vegetation growing in between the cracks.



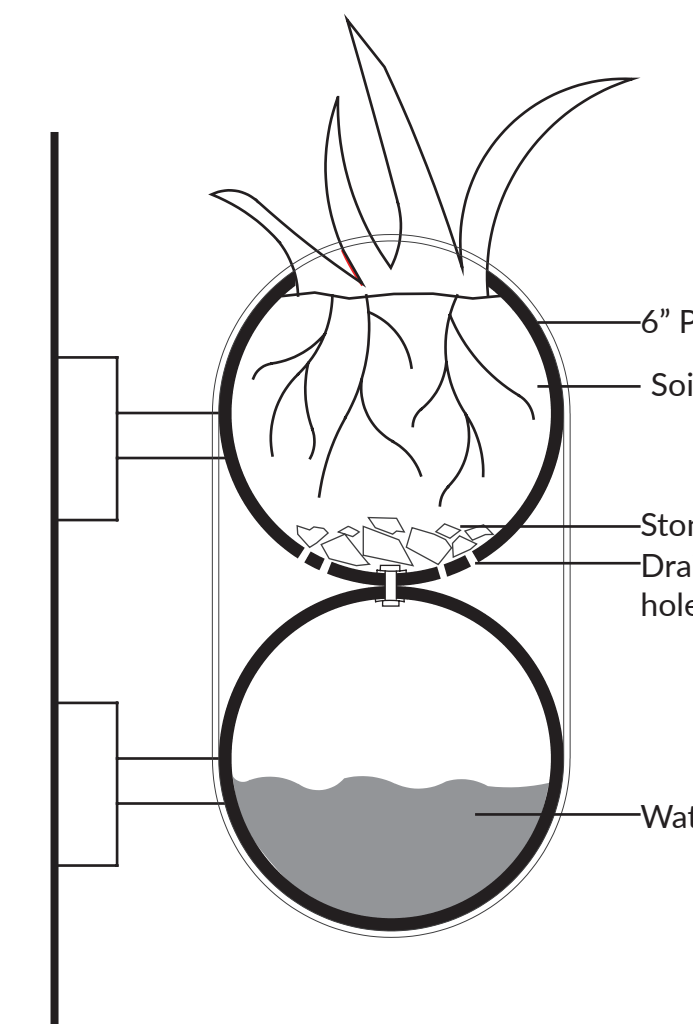
Planting Palette



This garden is planted mostly with low-growing sedums and ground covers that add interesting texture and flow around the pavers like moving water.

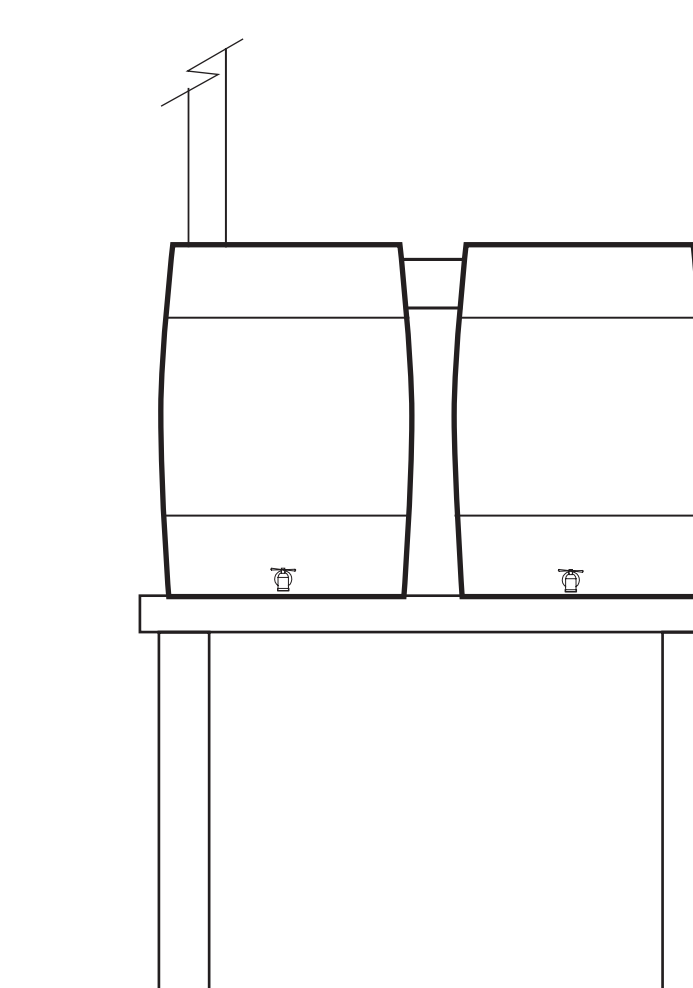


Site Features



Live Pipe

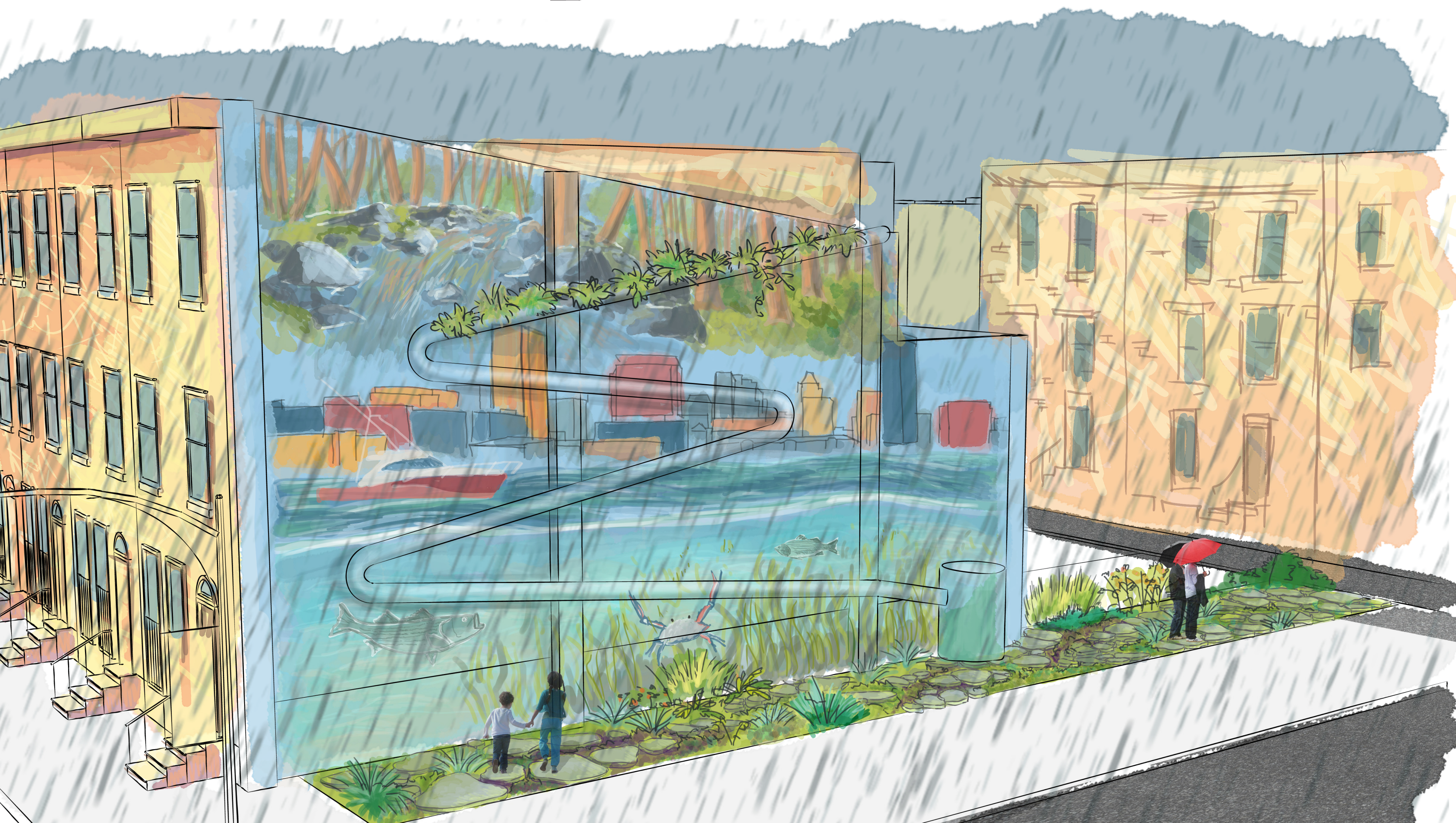
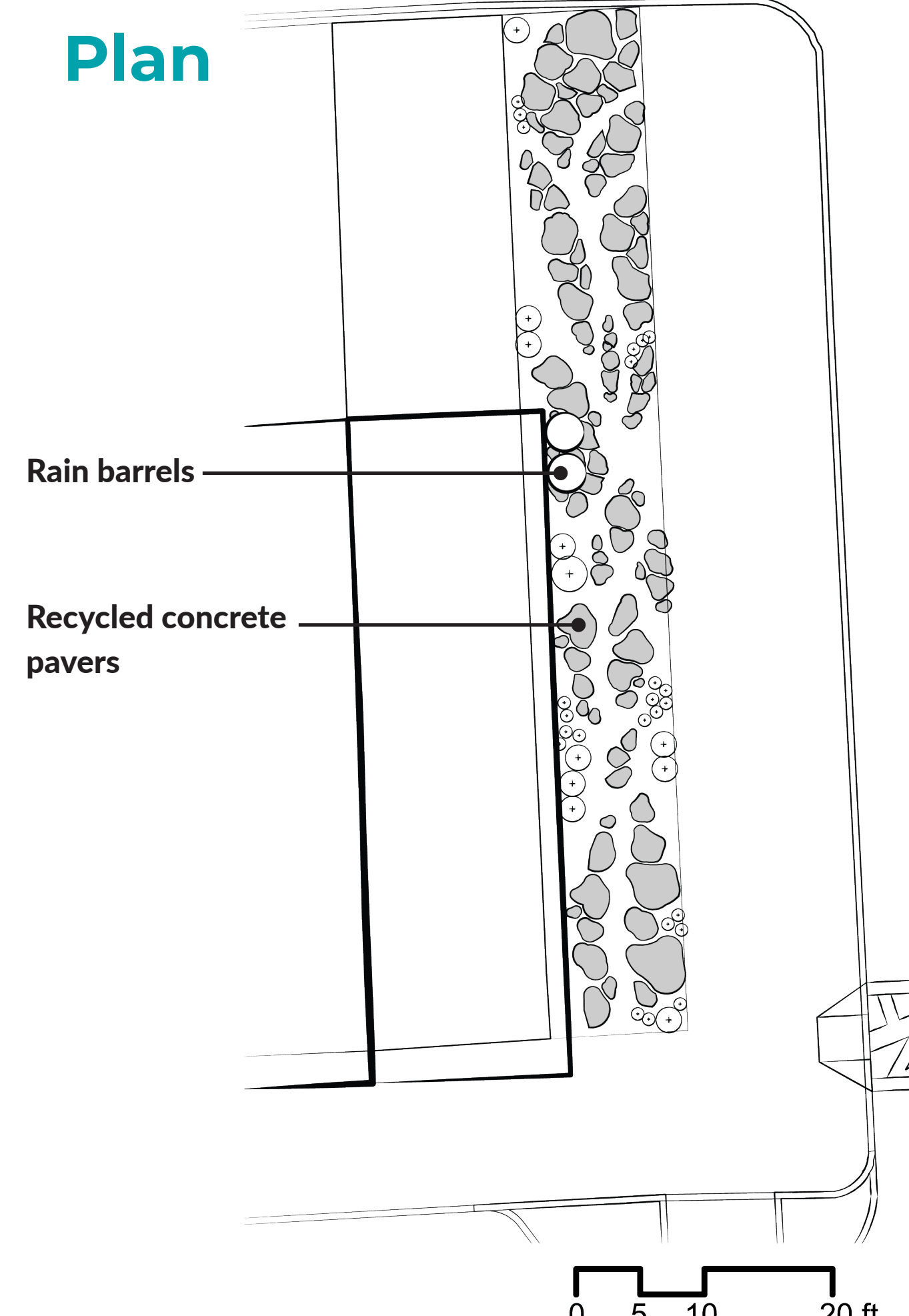
Section/detail of live pipe secured on top of the downspout.



Rain Barrels

Two fifty-five gallon rain barrels divert water from the existing gutter for use on site and in adjacent sites

Plan



0 5 10 20 ft