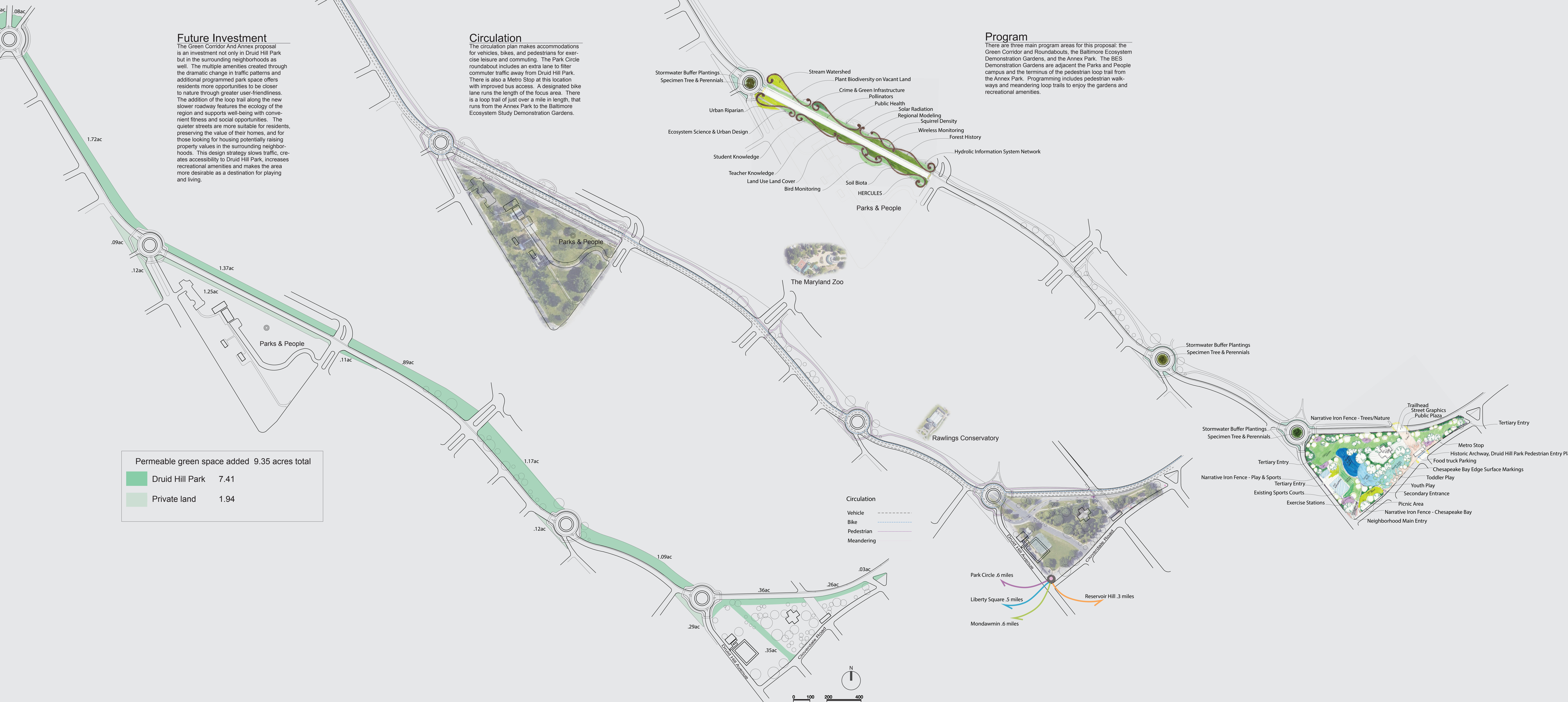


# Druid Hill Park's Green Corridor & Annex

Baltimore Studio, Spring 2019  
Cindi Hron

## Druid Hill Park Concept Statement

This design proposal is a direct response to the voices of the stakeholders who described their concerns in reaching the amenities of Druid Hill Park on foot. The commentary of residents and information gleaned from initial inventory and analysis suggest a strong interest in creating a more pedestrian-friendly environment inclusive of safe pedestrian access to Druid Hill Park.



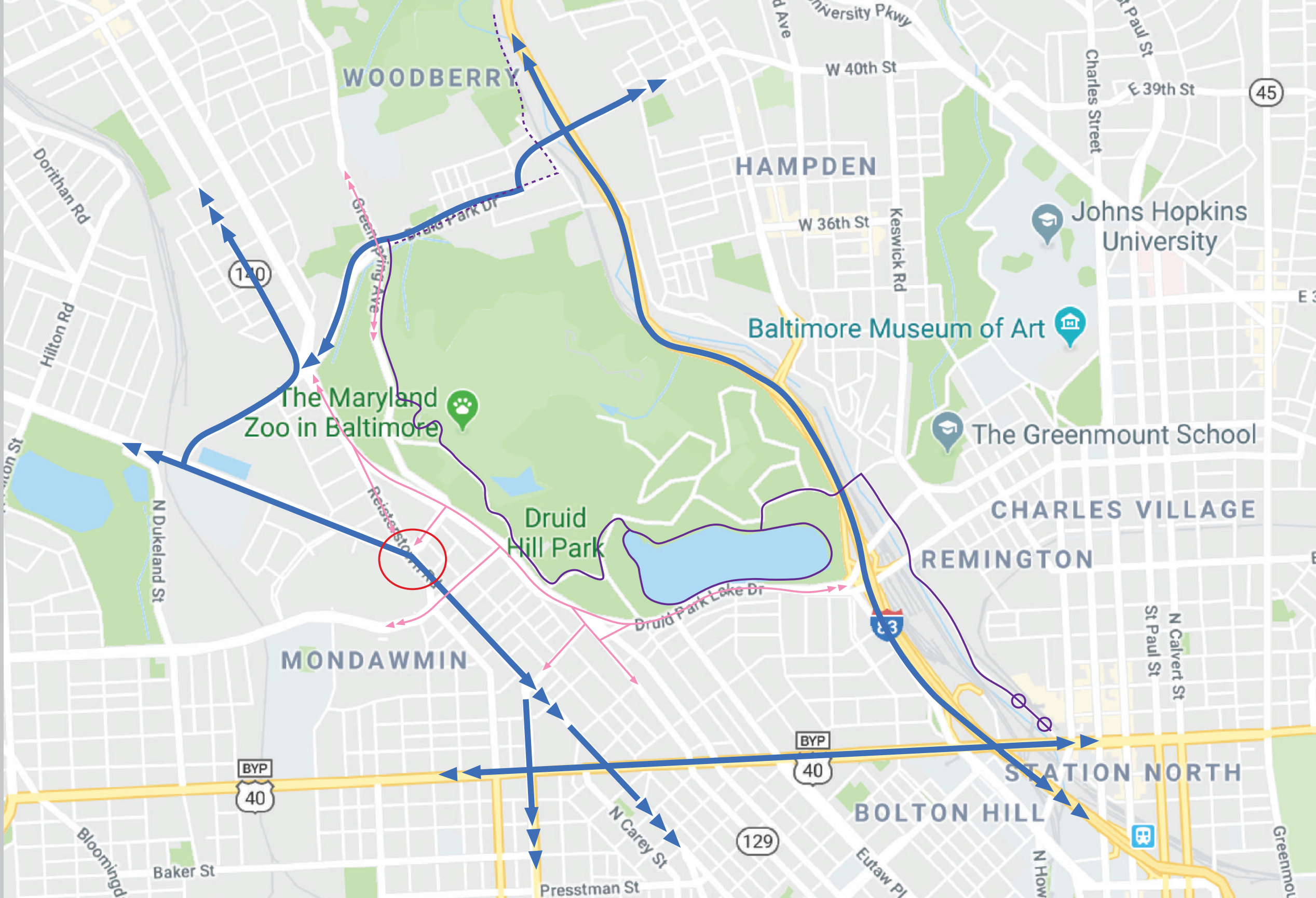
Project Site: Druid Hill Park southwestern edge and roadway, including three parcels at southwest corner



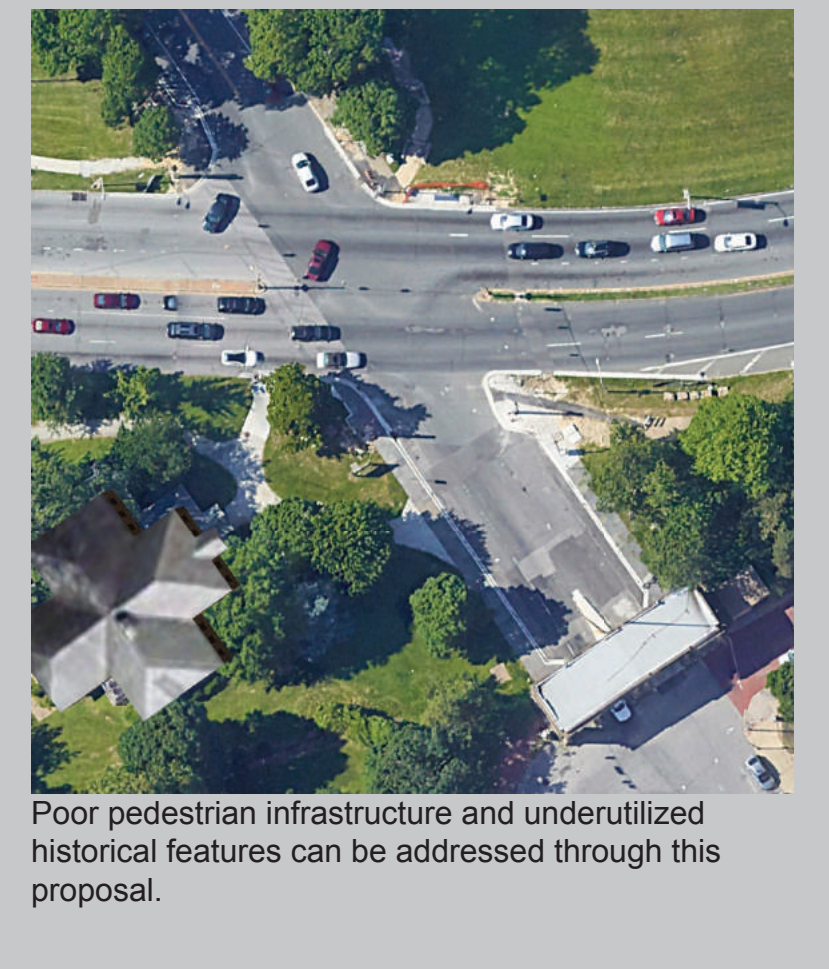
Existing Conditions



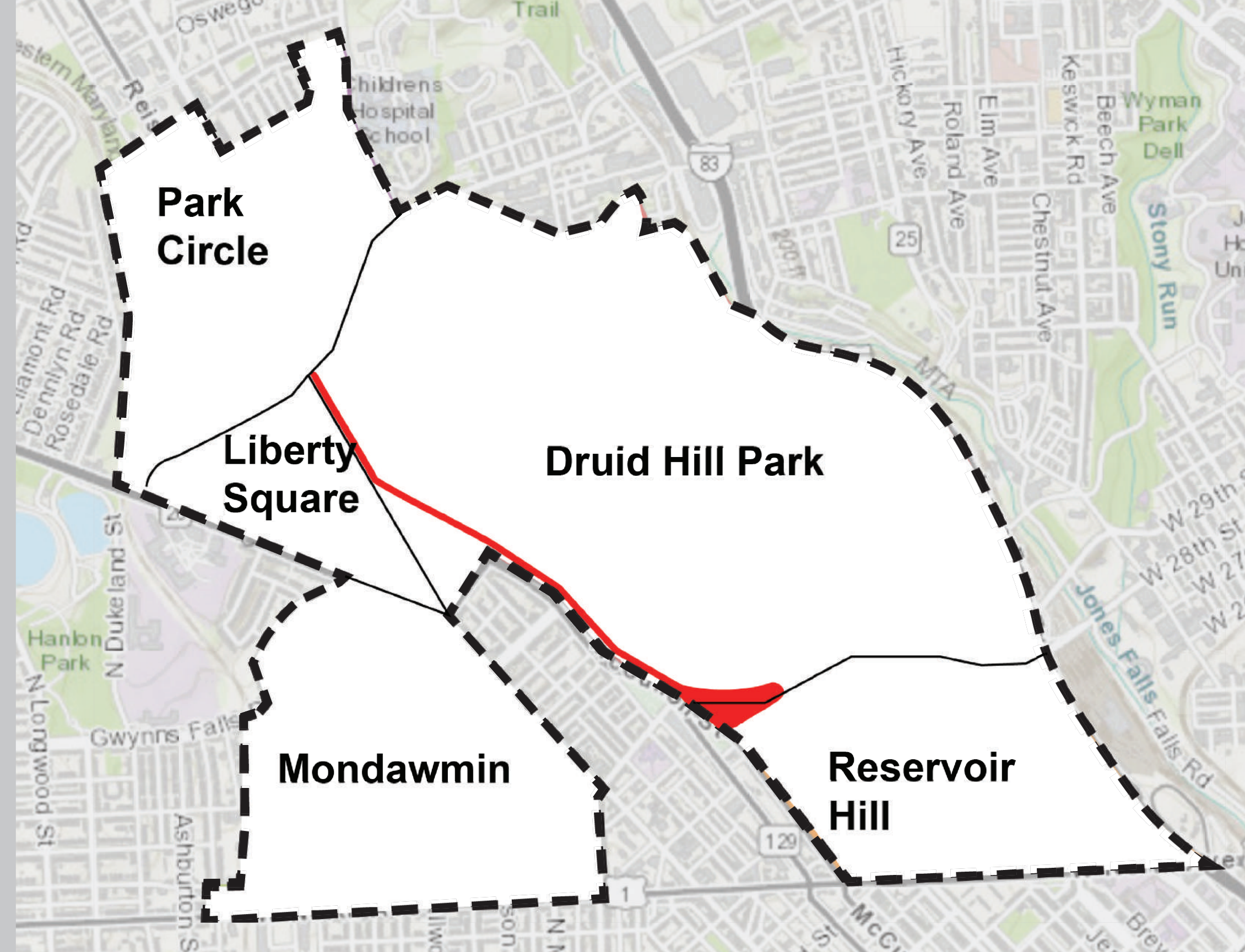
Project Site Alternative commuter vehicle routes



Existing Conditions

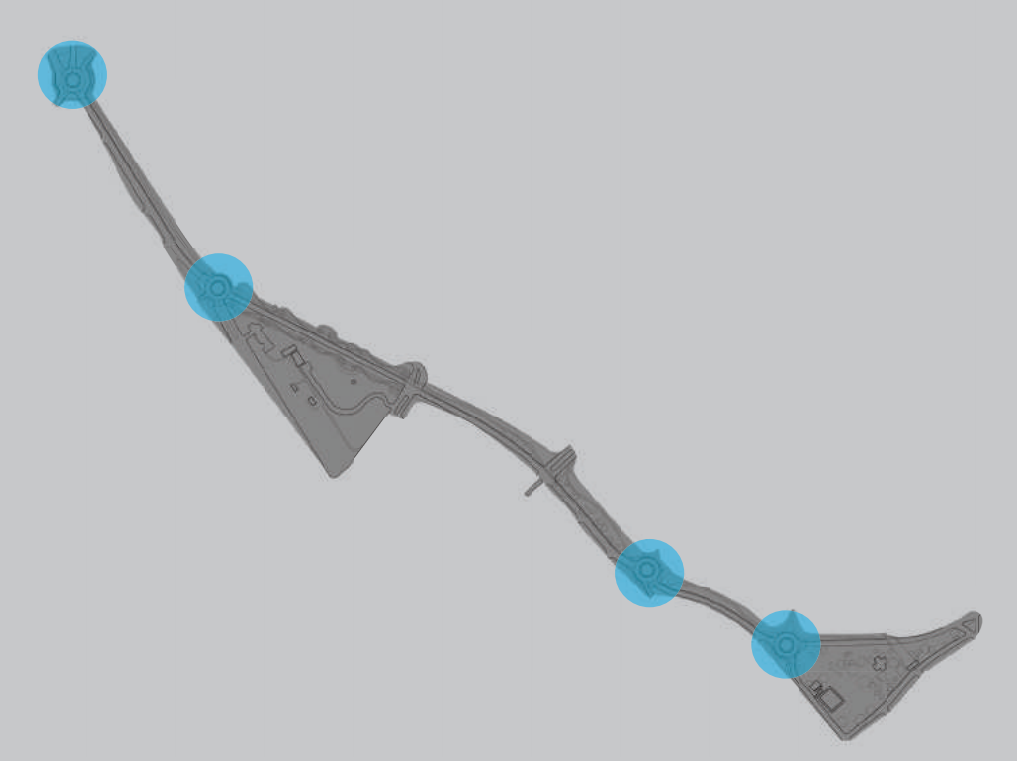


Baltimore Studio project site - Neighborhood Map



# Druid Hill Park's Green Corridor & Annex

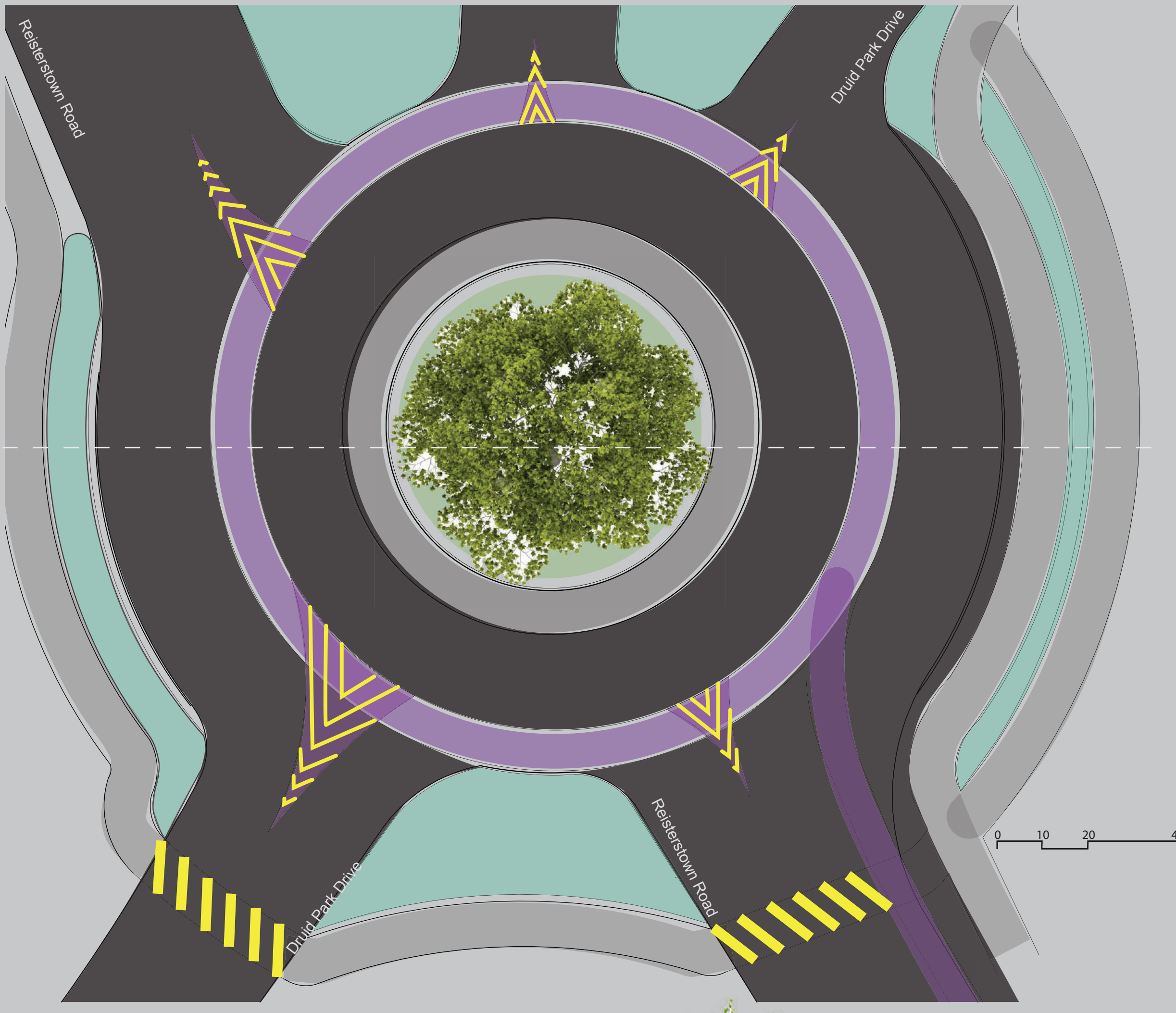
Baltimore Studio, Spring 2019  
Cindi Hron



## Roundabouts

The Green Corridor is the spine of the proposal. The creation of a green corridor running along Druid Park Lake Drive northward encompassing McCulloh Street, Swan Drive, through a section of Reisterstown Road culminating at the intersection of Reisterstown Road and Druid Park Drive, known as Park Circle, will completely transform the current understanding and spatial relationships of this strip of land. This design represents a major change of roadway, vehicle, bike, and pedestrian connections. The new corridor will reduce vehicle traffic to two lanes, one northbound and one southbound and create a designated bike lane. Four roundabouts will facilitate slower, smoother traffic flow along the western edge of Druid Hill Park. This will become transitional space that separates the park and residential areas. The traffic calming has the added benefit of noise reduction. The physical change of roadway design will add just over nine acres of permeable green space. Most of the added area will be on the Druid Hill Park side of the street. This action will quiet traffic and make the roadway safer for pedestrians accessing Druid Hill Park.

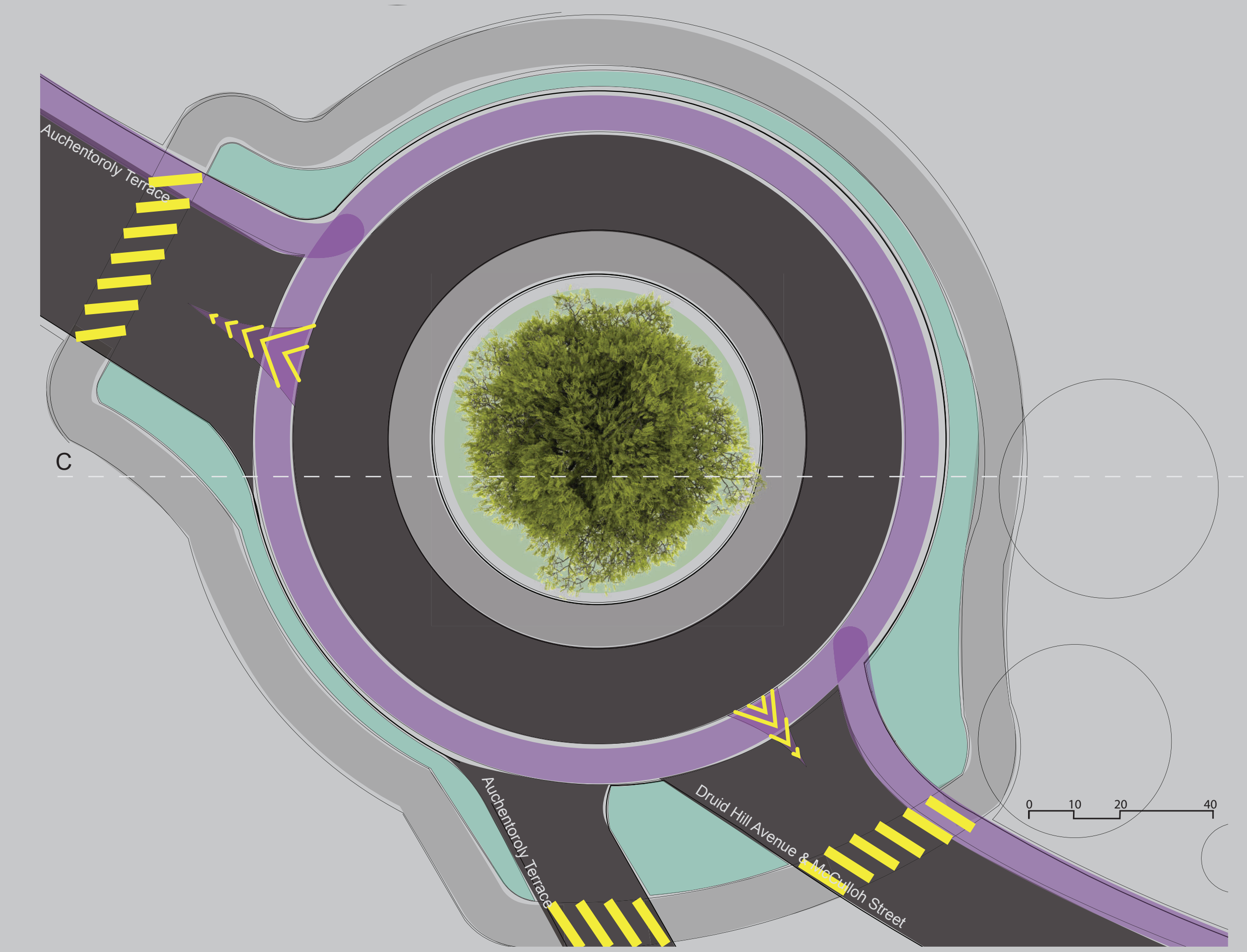
The roundabouts present an opportunity to introduce a signature tree specimen at each traffic circle. These large canopy trees will add stature to the parkway, fall color in Autumn, and can be festooned with lights in the evening. The addition of signature tree plantings adds to the landmark quality of Druid Hill Park.



Park Circle looking south



Park Circle looking south at night



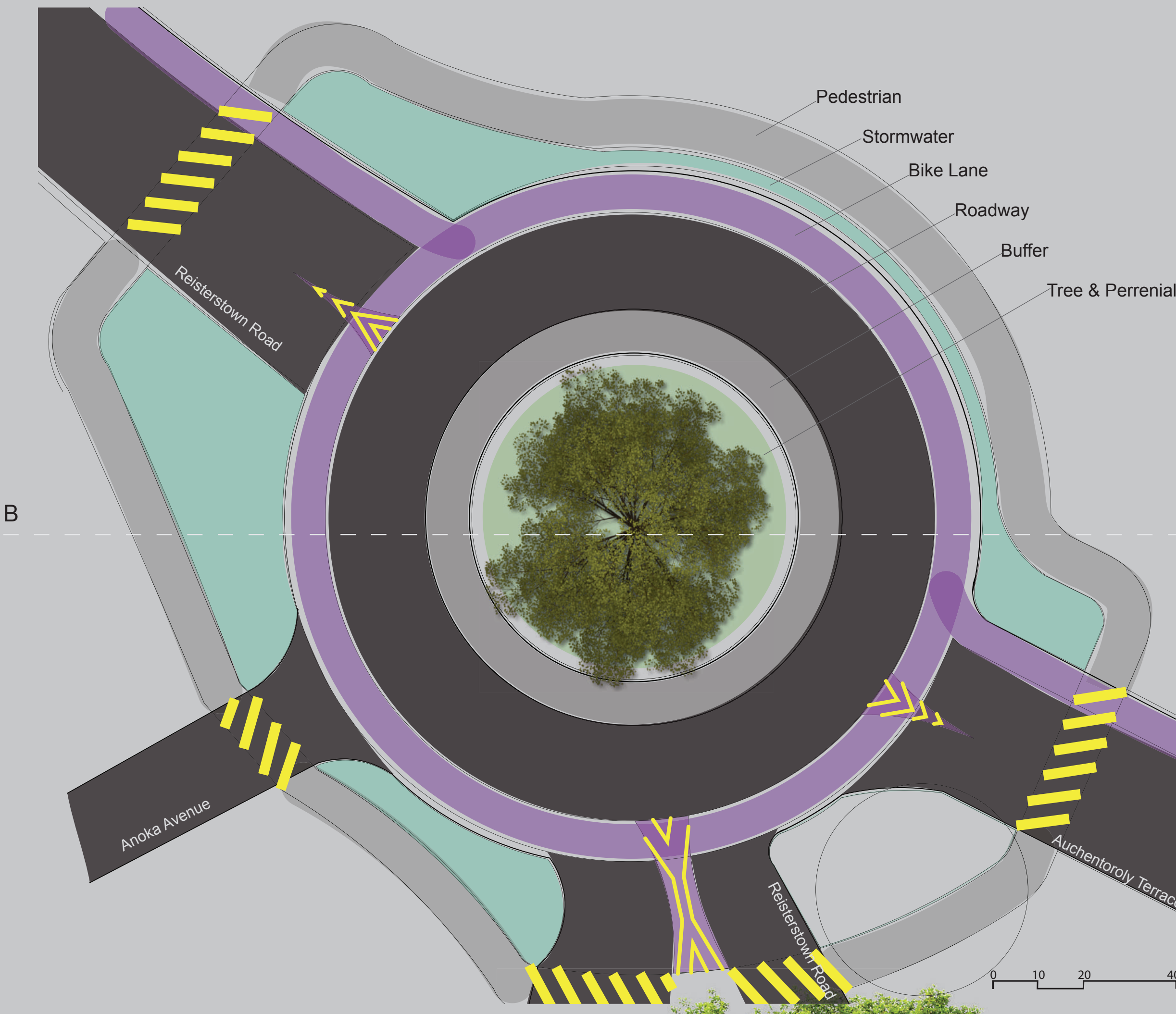
*Fagus Grandifolia*  
American Beech



New iron works Metro station in keeping with thematic project elements



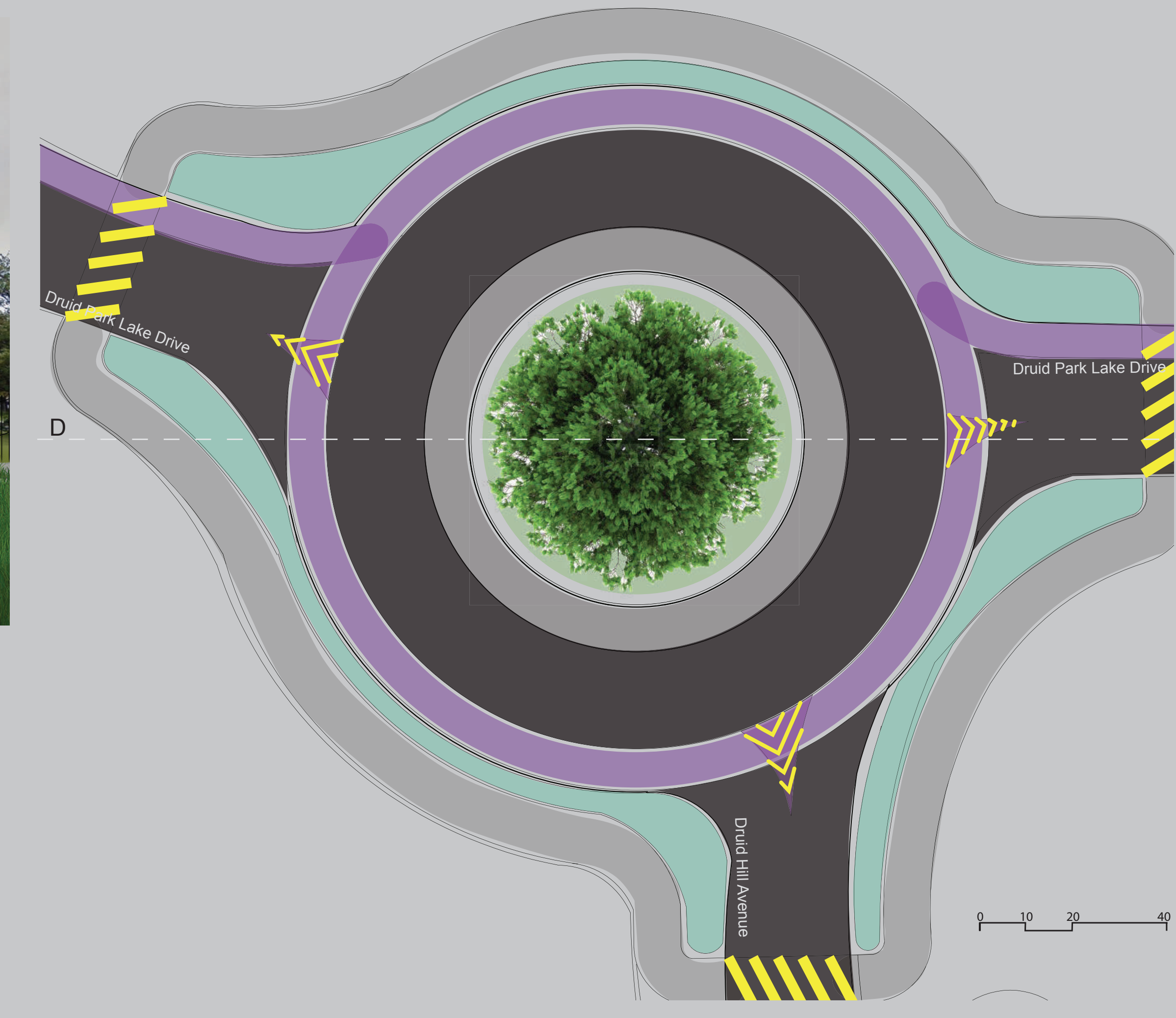
*Liriodendron tulipifera*  
Tulip Poplar



Auchenorly Terrace at Reisterstown Road, looking south. BES Demonstration garden seen at the right of the image



Druid Hill Ave, North Fulton, and Druid Park Lake Drive, looking towards the Annex Park



## Autumn Color



*Fagus Grandifolia*  
American Beech



*Acer Rubrum*  
Red Maple



*Liriodendron tulipifera*  
Tulip Poplar



*Platanus occidentalis*  
American Sycamore



*Acer Rubrum*  
Red Maple



*Platanus occidentalis*  
American Sycamore



# Druid Hill Park's Green Corridor & Annex

Baltimore Studio, Spring 2019  
Cindi Hron

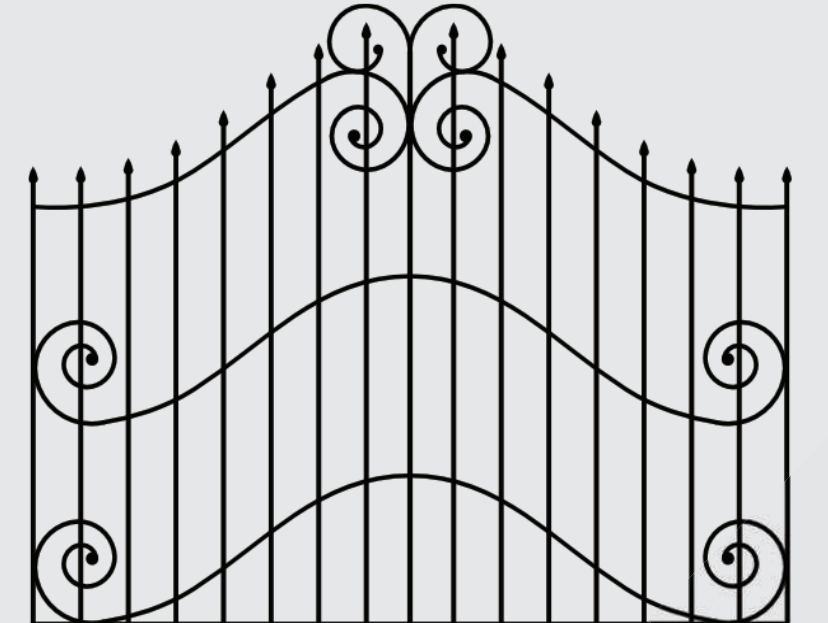


Demonstration Gardens at the intersection of Auchentoroly Terrace and Liberty Heights Avenue

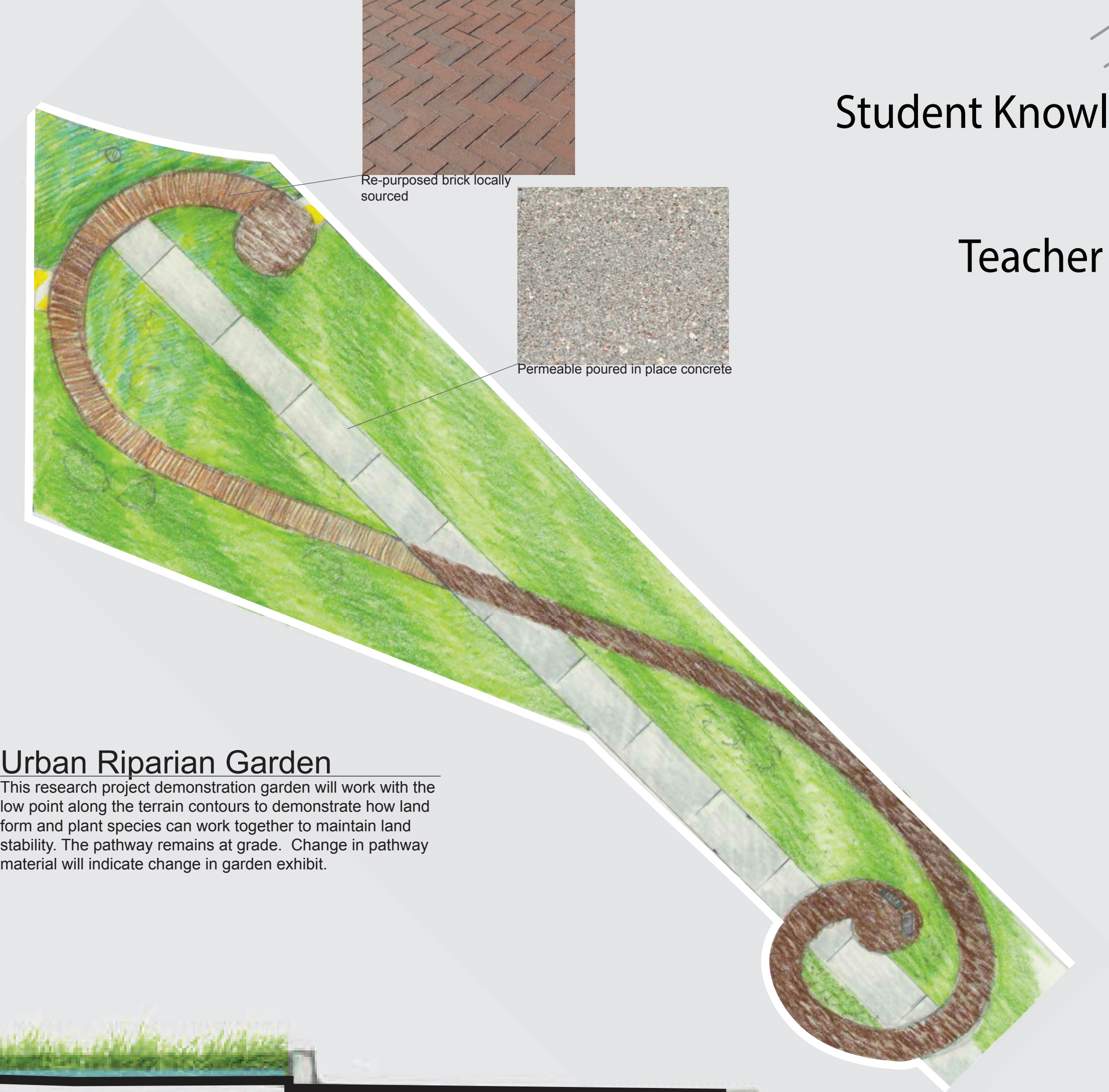
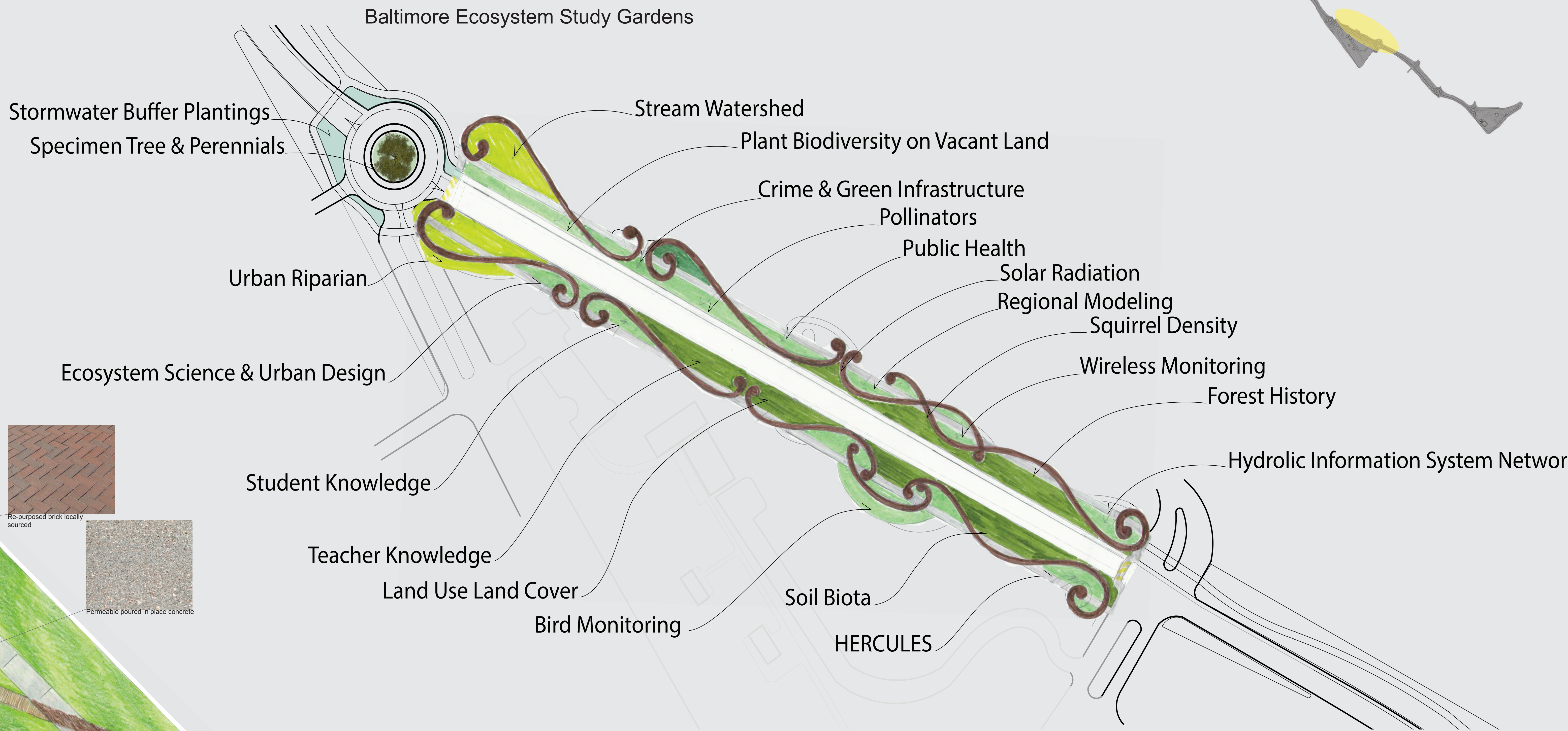
## Baltimore Ecosystem Gardens

The addition of new green space will generate a pedestrian-friendly walkway that creates a new entry experience into Druid Hill Park and also adds a loop trail. This new amenity will create a trail that can highlight the findings of the Baltimore Ecosystem Study through demonstration gardens and exhibits along the pathway.

The area between the intersection of Liberty Heights Avenue and Auchentoroly Terrace at Reisterstown Road is where new green space extends to both sides of the road and is the culmination of the loop trail. The end of this loop, adjacent to Parks and People offices will have a smaller trail within the larger one, so that those that wish to get in their steps can keep going, but those that wish to rest or linger may promenade along the smaller trail that winds around multiple demonstration gardens that illustrate the findings and workings of the Baltimore Ecosystem Study. The form of the demonstration gardens will reflect the variety of studies and on-going research that have taken place over the past 20 years. For example, a pollinator study may include a large patch of perennials attractive to specific pollinator species, a bird count study may include structures suggestive of bird habitats along with signage that includes local bird counts and illustrations describing how to identify birds in the park. Study authors will play an important role in defining the best way to communicate their findings to a larger audience.

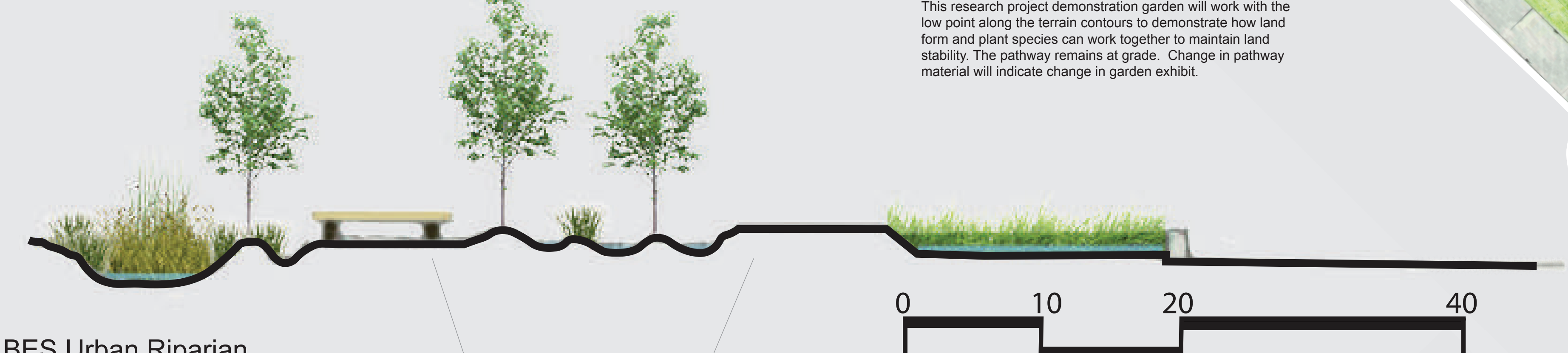


**Iron Work Heritage**  
Neighborhood homes surrounding Druid Hill Park display iron work on their stoops, windows, and as architectural ornamentation. The varied patterns and uses lend themselves to multiple applications in this design. For the Baltimore Ecosystem Study Gardens the decorative iron work patterns will be used as inspiration for the meandering pathway layout.



## Urban Riparian Garden

This research project demonstration garden will work with the low point along the terrain contours to demonstrate how land form and plant species can work together to maintain land stability. The pathway remains at grade. Change in pathway material will indicate change in garden exhibit.



## BES Urban Riparian

THE BALTIMORE ECOSYSTEM STUDY states that Riparian areas (stream sides) are considered to be hotspots of ecological function in many landscapes. Because they occur between land and water, they form unique ecosystems that act as buffer zones between uplands and streams. This study has focused on the human interaction factors associated with use and abuse of riparian ecosystems. The study covers the history of various mill runs in Baltimore especially the Gwynne Falls watershed.



Change in walkway material signals change in path type and garden display

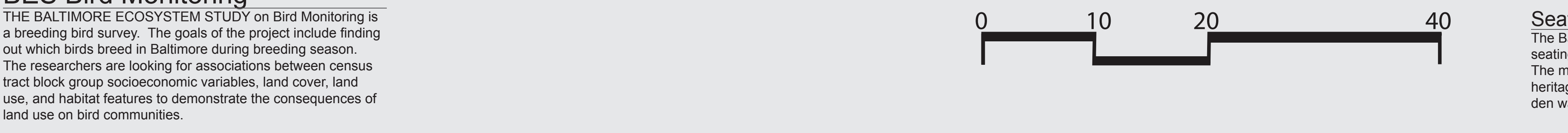
## Bird Monitoring Garden

This garden can offer models of regional bird species that visitors can observe and identify in the park. Silhouettes of birds will be illustrated in the walkway, while three-dimensional models of birds and bird houses can be perched at varying heights. The adjacent plantings will include low shrub varieties of bird favorite foods and nesting materials.



## BES Bird Monitoring

THE BALTIMORE ECOSYSTEM STUDY on Bird Monitoring is a breeding bird survey. The goals of the project include finding out which birds breed in Baltimore during breeding season. The researchers are looking for associations between census tract block group socioeconomic variables, land cover, land use, and habitat features to demonstrate the consequences of land use on bird communities.



## Seating Nodes

The Baltimore Ecosystem Study Gardens includes many seating areas within the meandering pathway design. The metal benches will further the reference to iron work heritage and be reflective of the curly design of the garden walkways.

### Public Art Opportunities

This proposal offers multiple opportunities for the integration of public art projects. The rich history of the city lends itself to the potential of distinctive placemaking with the addition of artistic vision. Creating a call for proposals for regional and national artists to address some of the site-specific details of this project will aid in creating a truly unique environment that will add to the Druid Hill Park experience and identity of the surrounding neighborhoods.

The fence work that defines the boundaries of the Annex Park can be enlivened with narrative attributes reflective of the space that the fence encloses. For example, the fence work nearest the sports courts could include representations of people engaged in activities related to play. The fence area facing the green corridor might include representations of the signature trees located at each roundabout, reinforcing the iconography of the trees and their relationship to the park. Likewise, areas of fencing facing Druid Hill Park may include images of things found within this natural setting and fencing along the Chesapeake Bay play area can include images reminiscent of wildlife found in the bay. Each area of fencing further reinforces our connection to each other and the larger environment through this narrative expression.

Prioritizing pedestrian experience is an important component of this project. Street graphics can be used to highlight this new significance. Along the green corridor there are numerous pedestrian crosswalks that need to be clearly marked. This can be done in a fun and engaging way through artist designed street graphics.

The Demonstration Gardens adjacent the Parks and People campus represents an important opportunity to exhibit the research produced over the last twenty years by the Baltimore Ecosystem Study. Research projects of this significant study can be revealed through collaborative efforts of artists working with researchers to define ways in which the information can be best communicated to a broader audience.

Examples of public art: Liz Lamanche, Earthsign, Medford, MA; Liz Lamanche, Earthsign, Somerville, MA; Enough Pie & Charleston Moves, Charleston, SC; Charles Sargent, Alternative Paving Concepts, Washington DC; Traffic Scapes, Ernes Flint, Decatur, GA; Graham Projects, Baltimore, MD; Somini Rodey, Devon UK; Michaels Bartolos, San Francisco, CA; Troy Neiman, Tucson, AZ; Peccis Trailhead, Las Vegas, NV; Example of decorative iron work.

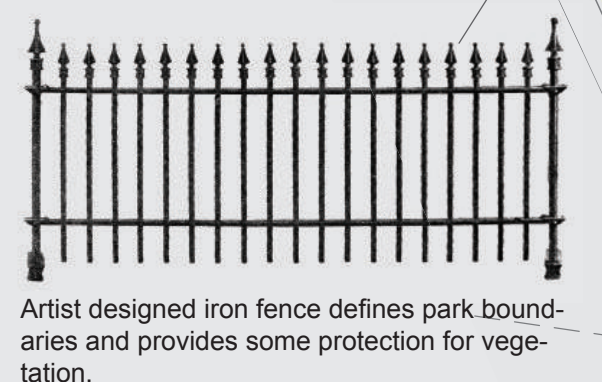
# Druid Hill Park's Green Corridor & Annex

Baltimore Studio, Spring 2019  
Cindi Hron

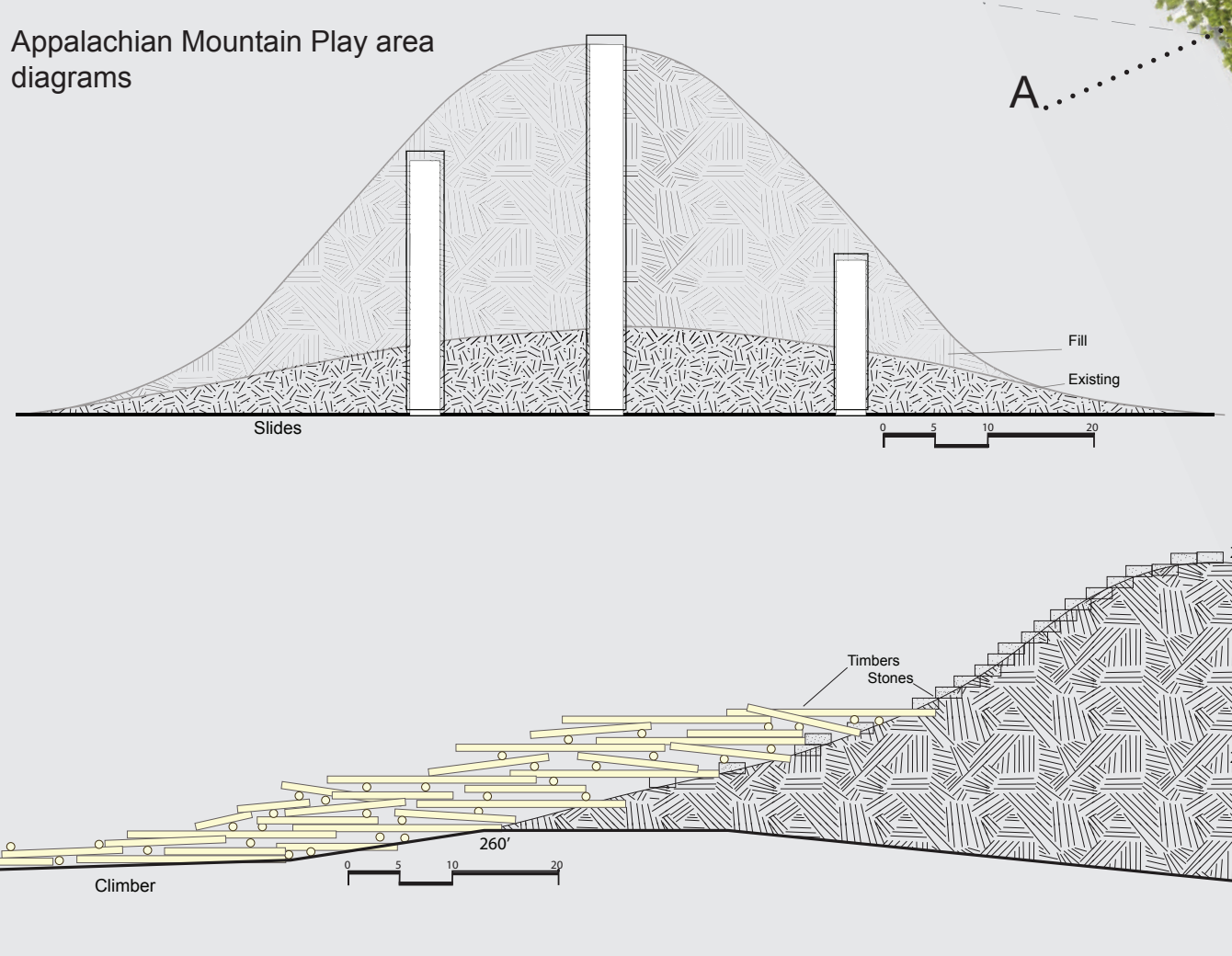
## Annex Park

The Annex is an attribute of the Green Corridor that links previously detached areas of park property together to create a high use neighborhood park with a Maryland geographic features theme. The historic archway at the southern end of the property creates a new grand pedestrian entry experience to Druid Hill Park. The Annex Park will have its own entry experience designed to accommodate residents living in the surrounding neighborhoods. The close proximity of this space to the residential neighborhoods of Reservoir Hill, Mondawmin, and Penn North addresses many of the interests identified by stakeholders and illustrated through our inventory and analysis study to provide neighborhood access to park elements that are most frequently used.

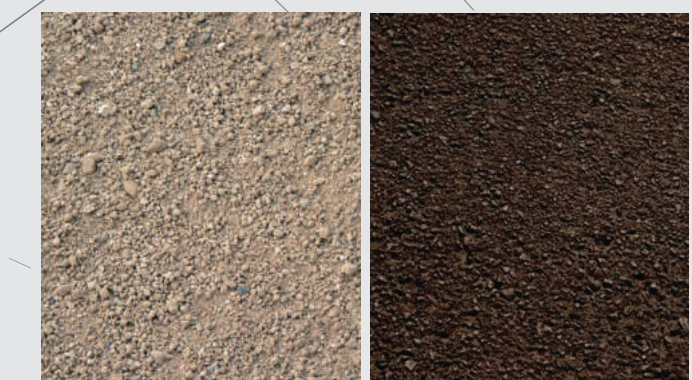
Closing Madison Avenue to thru traffic and opening it up as a pedestrian plaza takes advantage of the historic archway present at this site. Moreover, it affords a lovely view of Druid Hill Park and the new lake renovations. The plaza atmosphere created by the road closure opens up this space to adaptable use for informal gathering, weekend or evening food truck service, performance space, and most importantly safe and inviting pedestrian access to the larger park beyond.



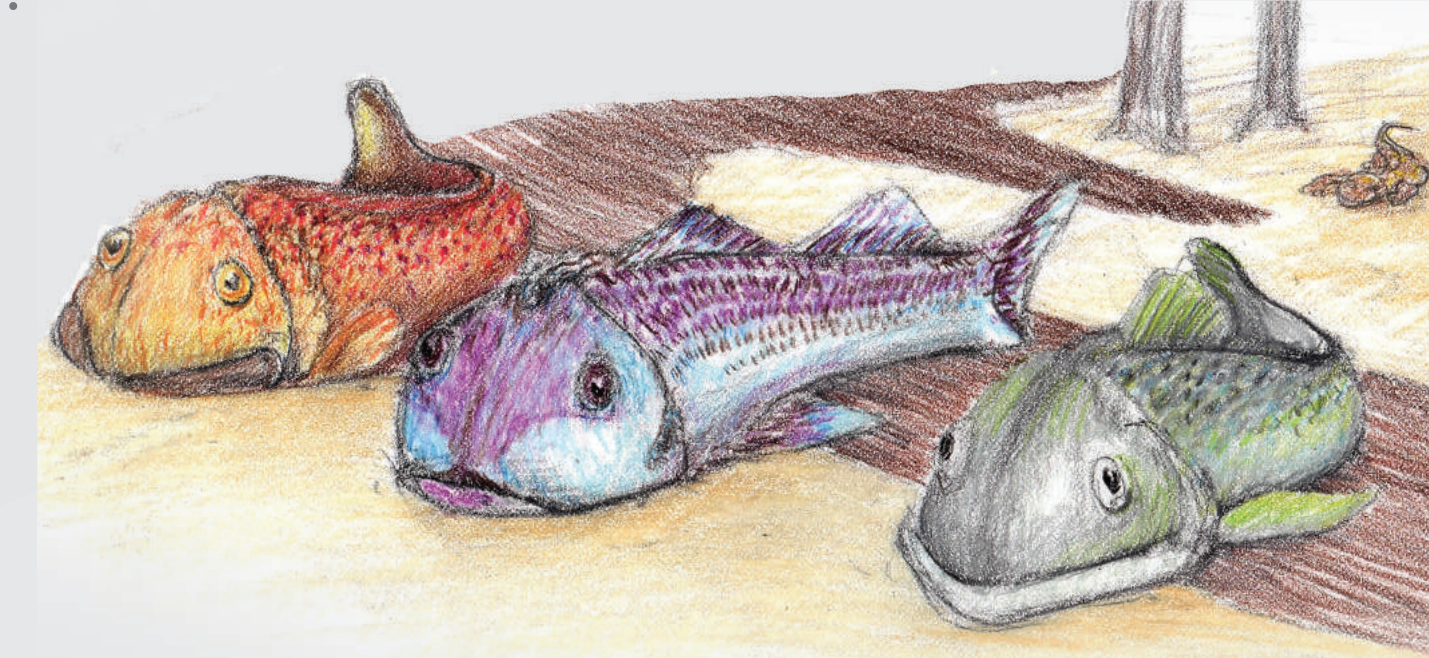
Artist designed iron fence defines park boundaries and provides some protection for vegetation.



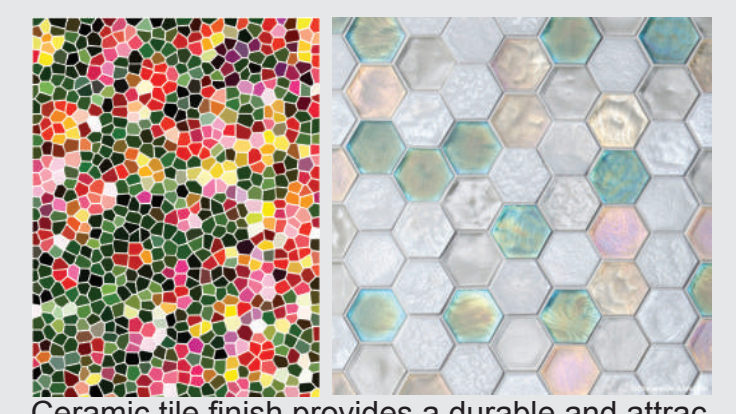
Appalachian Mountain Play area diagrams



Permeable ground cover of stabilized decomposed granite creates a smooth natural appearance for pathways and transitions from paths to turf areas. Lower cost also makes this a desirable material choice.



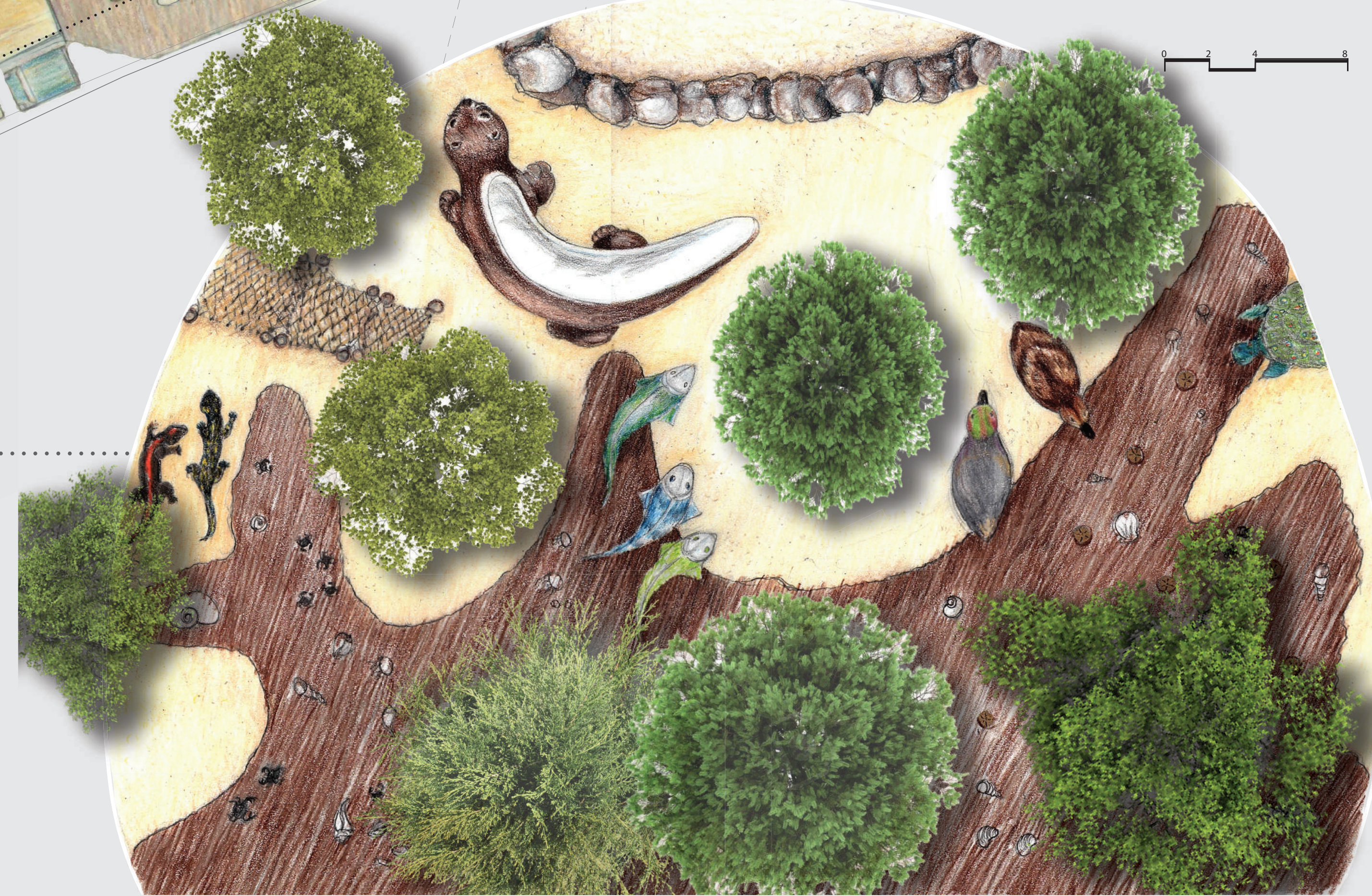
Cast concrete, colorful tile mosaic oversized wildlife of the Chesapeake Bay provide imaginative play opportunities and seating amongst the canopy trees adjacent the historic archway.



Ceramic tile finish provides a durable and attractive finish over the cast concrete convex forms.



Example of tile mosaic finish Children, Parade of Floats, Andrew Leicester, San Jose, CA



## Maryland Landscape Inspired Play Area

A nature-intensive playground for children will be incorporated into the park that focuses on the physical geography of Maryland. Play area features local wildlife to climb on and explore. Pavement treatment along the southwest edge of the Annex outlines the distinctive Chesapeake Bay edge with pavement inlay of sea life critters. This area transitions to the Potomac and Piedmont Plateau climbers and the Appalachian Mountains slides. There is open green space for flexible play and water features for cooling off. Structures are designed to reduce debris collections and be visual porous.



Water play area, part of the Chesapeake Bay youth play scape



Neighborhood entry at Druid Hill Avenue & Cloverdale Road

Elevation B, illustrates the relationship between the existing sports courts and the new slope created as a result of the closure of McCulloh Street. The new slope creates an opportunity for informal observation of the sports area.

