

NOVEMBER 2021

BRIDGE Newsletter

BRIDGE
A Diversity Action Alliance



NOTE FROM THE STEERING COMMITTEE



CONTACT US:
✉ bridgepennstate@gmail.com

FOLLOW US:
🐦 [@bridgepennstate](https://twitter.com/bridgepennstate)

f [Bridge Diversity Alliance](#)

🌐 <https://sites.psu.edu/bridgediversityalliance/>

Continuing the tradition started in 2020, BRIDGE will be distributing quarterly Newsletters to document and share the activities and events that BRIDGE has organized and the DEI efforts we continue to support, advocate for, and partake in. If you have any ideas of events for BRIDGE to sponsor or have noticed an area that needs changing, reach out and share with the Steering Committee. Feedback is also always welcomed!

NOVEMBER 2021

Leaders of BRIDGE this year

STEERING COMMITTEE



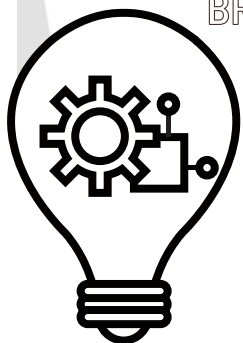
Sara Albrecht Soto
Clinical
BRIDGE TA



Jose Soto
Clinical



Esha Vaid
Clinical



Do you have ideas or feedback? Contact the Steering Committee ssoto@psu.edu

NOVEMBER 2021

Events



BRIDGE'S
FALL SEMESTER 2021 SCHEDULE

BRIDGE

All meetings will be via Zoom on the third Friday of the month unless holidays interfere. See link below!

| | |
|----|-----------------------------|
| 01 | September 17th at 4pm - 5pm |
| 02 | October 22nd at 4pm - 5pm |
| 03 | November 19th at 4pm - 5pm |

[HTTPS://PSU.ZOOM.US/J/96599479294](https://psu.zoom.us/j/96599479294)

COME ONE COME ALL!
LET'S CELEBRATE FALL AT

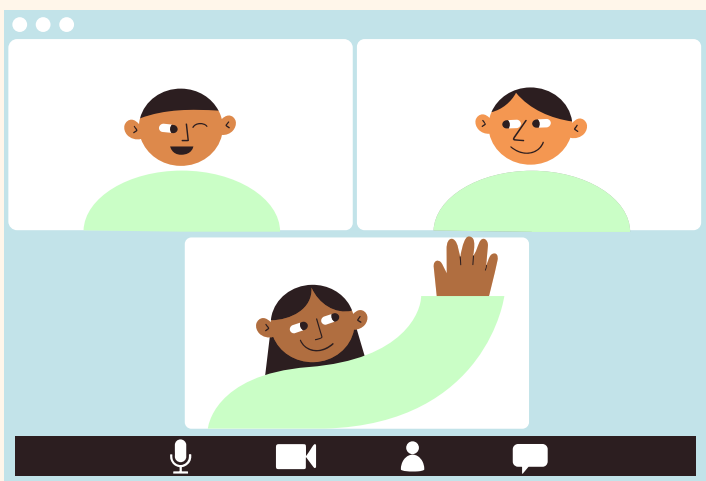
BRIDGE

FALL PICNIC 2021

NOVEMBER 6TH. | 12:00 PM - 3:00 PM
PARK FOREST (ADDRESS IN EVITE)

COME JOIN US FOR FREE FOOD, FALL DRINKS, FIREPIT, AND FUN
ALL PSYCHOLOGY STUDENTS AND STAFF ARE WELCOME
PLEASE RSVP!

<http://evite.me/TCT/ZyFUDR>



NOVEMEBR 2021

FALL Welcome Picnic



NOVEMBER 2021

Affinity Groups

Queer Students Affinity group

Contact Dan Spina dan.spina@psu.edu

Psychologists of Color (POC) Affinity Group

Contact Augie Lombera apl5674@psu.edu

International Students Affinity Group

Contact Eliana Hadjiandreou exh96@psu.edu



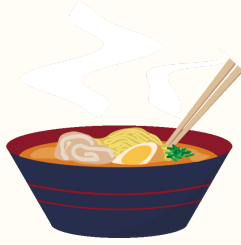
Affinity groups allow for students with shared experiences to get together to share, listen, and ask questions. It's also a time to get to know each other and make friends!



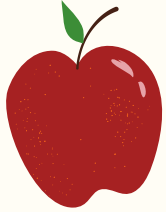
See next page for updates on most recent gatherings!

NOVEMBER 2021

Retention efforts



*This is the **International Students Affinity Group's** first semester! Membership is 10 people strong and growing. The group got together in September for dinner as their first social event.*



***POC affinity group** has been meeting over zoom regularly and had their first social event of apple picking in October!*



*The **Queer Affinity Group** has begun meeting this semester. Members got together in Sunset Park to open the semester in early September and met on October 30th for a Halloween themed meeting. Group members are planning on meeting at least once a month!*



NOVEMBER 2021

Recruitment Efforts

Department-Wide Information Night

First ever Department wide information night targeting recruitment of Underrepresented Minorities on October 19th was a success!



NextGen Psych Scholars Program



Contact

next.gen.psych.scholars@gmail.com

[@_NPSP_](https://twitter.com/_NPSP_)

We have 23 current PSU graduate students and post-docs serving as mentors, 12 of which have been paired for 1-on-1 mentorship. We also have 8 PSU undergraduate students and post-baccs who are participating as mentees. Our mentors have gone above and beyond in facilitating statement of purpose workshops. Marisa Lytle is the admin TA for the program and is doing an outstanding job!

NOVEMEBR 2021

ADVOCACY

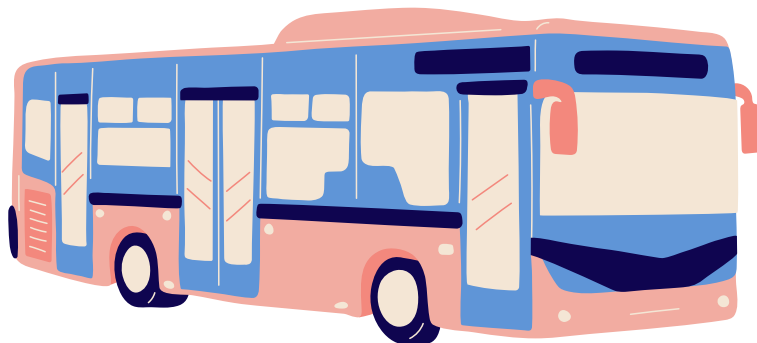


RIDEPass Access for International and Low-Income Students

BRIDGE is advocating for international and low-income students that have brought a concern to us. Currently, students that live within 0.75 mile radius to campus are ineligible to receive the discounted RIDEPass bus pass that allows students to travel not only to campus but also to several neighboring towns and sites (e.g., Boalsburg, Bellefonte). Although this rule is understandable, it has disproportionately impacted the students that do not have a personal vehicle. Please read about this concern further with the link below and consider signing our initiative to bring this up to Penn State Administration. Please feel free to email eqv5046@psu.edu with further questions or interest in supporting this initiative.

A Letter to change the policy was supported by Sustainability Institute, GADI members, and GPSA can be found here:

<https://sites.psu.edu/bridgediversityalliance/files/2021/04/Penn-State-RIDEPass-Concern.pdf>



Efforts are now aimed at collecting data on transportation needs to provide quantitative support for the need to expand access to RIDEPass. If you haven't yet completed the survey please do and/or share it widely! <https://forms.gle/9mzzYMyLjQj9quwZA>

BRIDGE Featured Members

BRIDGE continues to highlight faculty and students throughout the semester in the display case in Moore and on our social media

Faculty feature

Dr. Alicia Drais-Parrillo is a fervent advocate within the department for the undergraduate community and for diversifying curriculum. She is also the assistant director of DEI in the Psychology department and a member of the DEI Task Force where she leads the subcommittee on curriculum and instruction. One example of her current efforts includes building a collection of current research summaries from/on diverse individuals for faculty to expand their course content. She aims reduce the barriers to instructors for diversifying their materials by doing the legwork or at the minimum getting the process started.



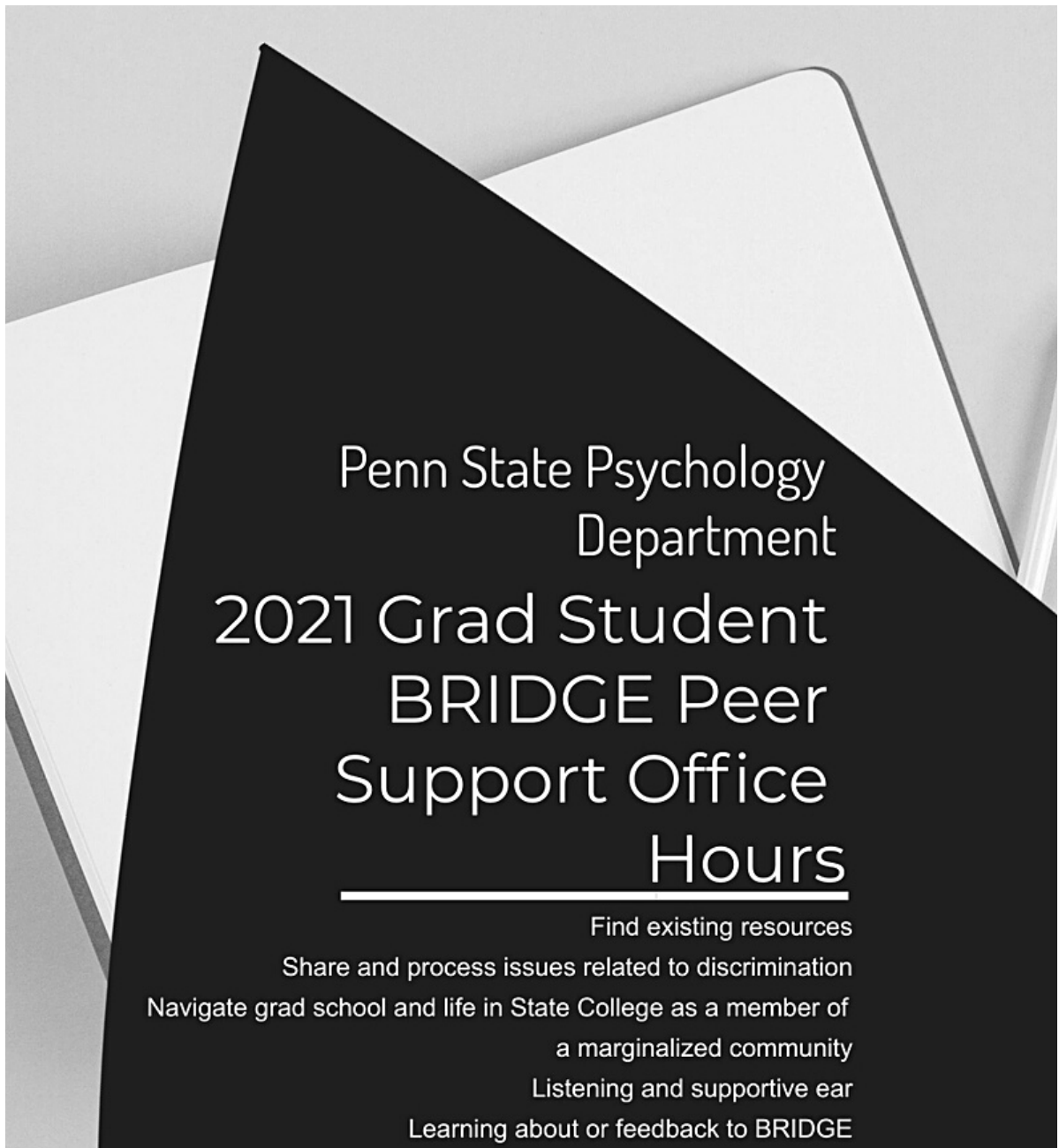
Student feature

Myles Arrington is a third-year in the Developmental area. His research focuses on understanding the trajectory of face recognition skills throughout adolescence and emerging adulthood, as well as determining how face recognition abilities manifest differently in different social contexts. His long term goal is to expand processing tasks to use a diverse set of ethnic-racial faces. He seeks to integrate diversity work into his research by elucidating the ways that ethnic-racial context and identity shape processing given that face processing science is largely ethnically/racially homogenous, with most tasks using White faces, and most participants being White college students.



NOVEMBER 2021

Peer Support Hours



Penn State Psychology
Department
2021 Grad Student
BRIDGE Peer
Support Office
Hours

Find existing resources
Share and process issues related to discrimination
Navigate grad school and life in State College as a member of
a marginalized community
Listening and supportive ear
Learning about or feedback to BRIDGE

WHEN: Tuesdays 3-4pm

WHERE: <https://psu.zoom.us/j/95051708926>

WHO: BRIDGE TA Sara Soto. Anyone is welcome, you are not alone!

