

# SPRING 2023 NEWSLETTER



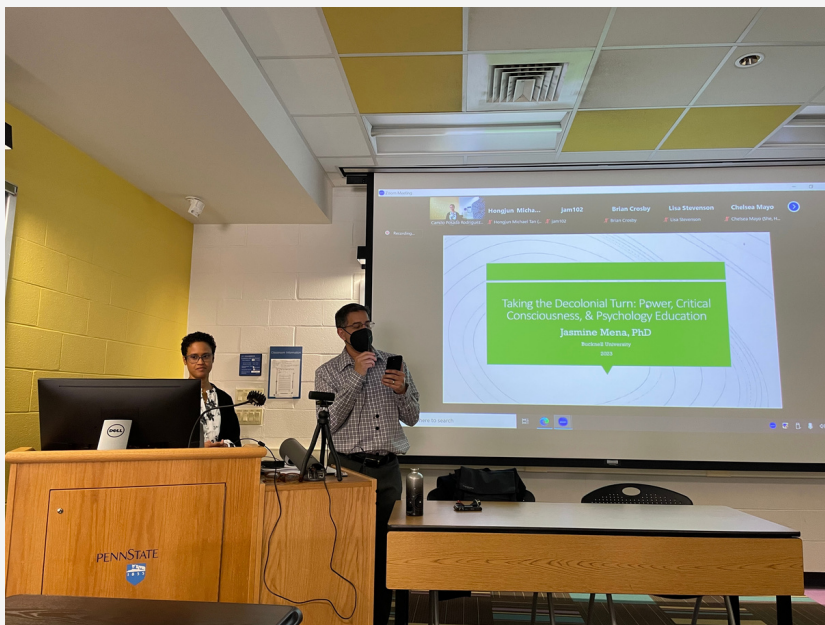
---

# Events & Accomplishments

- Held regular meetings
- Presented at psych areas' recruitment events
- Organized talk by Dr. Jasmine Mena
- Updated BRIDGE Resource Guide
- Moderated Grad Student Town Hall and followed up on issues
- Queer Student Affinity Group met for boba and went to a drag show
- POC Affinity Group met for boba and went on a hike
- Advocated for issues related to international students (OPT application fee, listserv)
- Hosted panel for admitted students
- Game Night social
- End of year celebration
- BRIDGE Impact Awards








PennState College of the Liberal Arts

DEPARTMENT OF PSYCHOLOGY

The Department of Psychology's BRIDGE Diversity Action Alliance and DEI Committee present:

## "Taking the Decolonial Turn: Power, Critical Consciousness, and Psychology Education"



**Jasmine Mena**

Jasmine Mena is an associate professor of Psychology at Bucknell University. Her teaching and scholarship examine the influence of cultural and contextual factors on physical and mental health and quality of life. She uses a critical and multilevel approach to examine three interrelated scholarly areas including 1) the impact of discrimination on psychological distress, 2) psychosocial and structural determinants of health and health disparities, and 3) critical and decolonial psychology education.

**Tuesday, March 14**  
1:30–3:00 p.m. EST  
111 Chambers

Zoom link is available upon request.  
Email: [cfp5382@psu.edu](mailto:cfp5382@psu.edu)

This publication is available in alternative media on request. Penn State is an equal opportunity, affirmative action employer, and is committed to providing employment opportunities to all qualified applicants without regard to race, color, religion, age, sex, sexual orientation, gender identity, national origin, disability or protected veteran status. Penn State encourages qualified persons with disabilities to participate in its programs and activities. If you anticipate needing any type of accommodation or have questions about the physical access provided, please contact Camilo Posada Rodriguez at 817-255-1214 or [cfp5382@psu.edu](mailto:cfp5382@psu.edu), in advance of your participation or visit: U.E.E. 180 23-465





## Congratulations to **Tiyobista Maereg & Camilo Posada Rodríguez** for receiving the 2023 BRIDGE Impact Awards!







---

# Committee Chairs

## Steering

Katsumi Yamaguchi-Pedroza

Sara Albrecht Soto

Camilo Posada Rodríguez

José Soto



## Recruitment & Retention

Marisa Lytle

Metzli Lombera

## Social

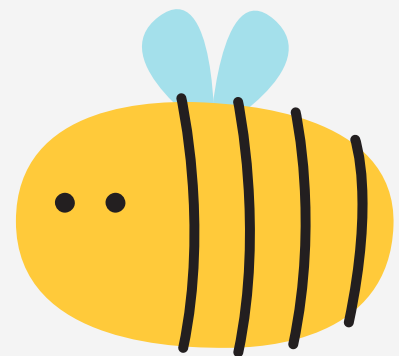
Emerson Todd

Jude Sullivan

## Training & Education

Camilo Posada Rodríguez

Michael Tan





# Affinity Groups

The purpose of affinity groups is for people with a shared identity to share resources and build community. Contact the following people if interested in being involved!



## **Queer Affinity Group**

Dan Spina  
([daniel.spina@psu.edu](mailto:daniel.spina@psu.edu))

## **Psychologists of Color**

Sara Albrecht Soto  
([sla5510@psu.edu](mailto:sla5510@psu.edu))

## **International Students**

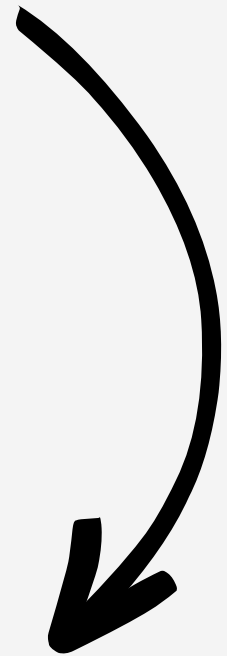
Kivilcim Değirmencioglu  
([kbd5449@psu.edu](mailto:kbd5449@psu.edu))



---

# Want to get involved with BRIDGE next year?

## Fill out this quick survey!



<https://tinyurl.com/BRIDGEF23survey>