

Effects of End-Group Termination on Salting-Out Constants for Triglycine

Jana Hladílková,[†] Jan Heyda,[‡] Kelvin B. Rembert,[§] Halil I. Okur,[§] Yadagiri Kurra,^{||} Wenshe R. Liu,^{||} Christian Hilty,^{||} Paul S. Cremer,^{*,§} and Pavel Jungwirth^{*,†}

[†]Institute of Organic Chemistry and Biochemistry, Academy of Sciences of the Czech Republic, Flemingovo nám. 2, 16610 Prague 6, Czech Republic

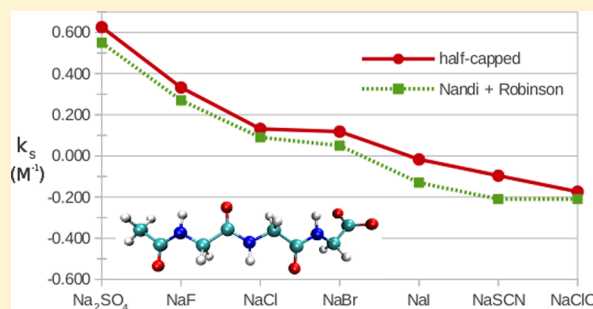
[‡]Soft Matter and Functional Materials, Helmholtz-Zentrum Berlin, Hahn-Meitner Platz 1, 14109 Berlin, Germany

[§]Chemistry Department, The Pennsylvania State University, 104 Chemistry Building, University Park, Pennsylvania 16802, United States

^{||}Chemistry Department, Texas A&M University, 3255 TAMU, College Station, Texas 77843, United States

ABSTRACT: Salting-out constants for triglycine were calculated for a series of Hofmeister salts using molecular dynamics simulations. Three variants of the peptide were considered with both termini capped, just the N-terminus capped, and without capping. The simulations were supported by NMR and FTIR measurements. The data provide strong evidence that previous experimental values of salting-out constants assigned to the fully capped peptide (as previously assumed) should have been assigned to the half-capped peptide instead. Therefore, these values cannot be used to directly establish Hofmeister ordering of ions at the peptide backbone because they are strongly influenced by interactions of the ions with the negatively charged C terminus.

SECTION: Biophysical Chemistry and Biomolecules



The action of cosolvents, such as salt ions or osmolytes, on aqueous biological molecules can be treated in a thermodynamically rigorous way by Kirkwood–Buff theory.¹ This theory connects microscopic structural properties in the form of radial distribution functions with macroscopic observables like excess chemical potentials and solubilities. In particular, it enables one to derive salting-out constants from molecular simulations and to connect them with experimentally observed values.² Accurately determined salting-out constants for a given protein or peptide allow for quantitatively establishing Hofmeister ordering^{3,4} of the investigated salt ions, which is a prerequisite for understanding ion-specific effects on biomolecules.⁵

In the early 1970s, Nandi and Robinson measured the salting-out constants of short oligoglycines.⁶ To establish Hofmeister ordering of ions at the peptide bond, they tried to suppress the effects of the charged terminal groups of the oligopeptides by attempting to cap both the C- and N-termini. The salting-out constants they found for acetyltriglycine ethyl ester in aqueous salt solutions⁶ are reproduced in Table 1 together with the corresponding values for uncapped triglycine (GGG).⁷ As can be seen, capping the terminal groups has a dramatic effect on the salting-out constants. Specifically, strongly hydrated ions display a salting-out effect on the capped peptide and weakly hydrated ions salt it in. In contrast, all investigated ions salt in the uncapped peptide. This is

Table 1. Experimental^{6,7} Solubilities (g of peptide/100 g of solution) and Salting-Out Constant k_s for Acetyltriglycine Ethyl Ester and Triglycine in Various Hofmeister Salts at Molar Concentrations C_s of 1 M^a

salt	acetyltriglycine ethyl ester ⁶		triglycine ⁷	
	solubility	k_s (M ⁻¹)	solubility	k_s (M ⁻¹)
water	0.648	0	6.41	0
Na ₂ SO ₄	0.18	0.55		
NaAc			7.44	−0.06
NaF	0.35	0.27		
NaCl	0.53	0.09	9.09	−0.15
NaBr	0.57	0.05	9.48	−0.17
NaI	0.87	−0.13		
NaSCN	1.05	−0.21		
NaClO ₄	1.05	−0.21		

^aExperimental definition of k_s based on peptide solubility in water $S(0)$ and in salt solution $S(C_s)$ is as follows: $k_s C_s = \log(S(0)/S(C_s))$.

consistent with our recent findings that ion pairing with charged termini can be quite strong for short peptides and may overwhelm the interactions of ions with the peptide bond.⁸

Received: October 15, 2013

Accepted: November 14, 2013

Recently, the salting-out constants for oligoglycines by Nandi and Robinson⁶ have been used to derive partitioning coefficients of individual ions in the Hofmeister series for the amide group forming the peptide bond at the protein backbone.^{9,10} Such an approach can be justified provided the effects of the termini on ion binding are small, such as is the case when the termini are properly capped (and thus neutralized). However, we have found recently that while the *N*-terminus can be easily acetylated it is actually rather difficult to cap the *C*-terminus of oligoglycines.⁸ As a matter of fact, we were not able to effectively cap the *C*-terminus by the esterification procedure described in ref 6. This led us to employ molecular dynamics (MD) simulations to extract salting-out constants for fully capped versus uncapped and half-capped (only at the *N*-terminus) GGG to find out which results correlate better with those from the previous experiments.⁶

We have thus simulated capped, half-capped, and uncapped GGG in aqueous solutions of seven sodium salts with a series of Hofmeister anions: Na₂SO₄, NaF, NaCl, NaBr, NaI, NaSCN, and NaClO₄. Using the simulations, we related the salting out constant, k_s , to the calculated preferential binding coefficient, Γ_s , (for definition, see ref 8) of a given salt at concentration C_s to the peptide molecule:

$$k_s C_s = -\Gamma_s / 2.303 \quad (1)$$

This relation, which assumes that the preferential binding coefficient Γ_s is independent of the peptide concentration and an ideal behavior of the solution, can be very accurate for molecules with low solubilities (such as the capped and half-capped GGG), and is approximately valid for more soluble molecules like GGG as well.² The calculated salting-out constants can be then directly compared with the experimental values obtained by Nandi and Robinson.⁶

Figure 1 presents such a comparison for all three investigated variants of GGG, that is, the uncapped, capped, and half-capped peptide. First and foremost, we see from Figure 1 that the simulations of the half-capped system agree quantitatively with the experiment, while there are significant discrepancies between the calculations and measurements for the other two systems. The present results thus strongly indicate that Nandi and Robinson⁶ actually did not succeed in capping the *C*-terminus. This observation, supported by the experimental fact that we were also unable to effectively cap the *C*-terminus of GGG by their esterification procedure (but instead had to use another synthetic route),⁸ has important implications for molecular interpretations of the Hofmeister ordering of ions, as discussed later.

The half-capped GGG system is negatively charged, having only the *N*-terminus neutralized. Anions, therefore, tend to be repelled from it, while sodium is attracted. For anions, which are more strongly hydrated than sodium, in particular, sulfate and fluoride, anionic repulsion dominates over cationic attraction, leading to a positive salting-out constant (Figure 1, bottom). The opposite is true for weakly hydrated anions, such as iodide, thiocyanate, or perchlorate, which are also attracted to the peptide backbone.^{5,8} As a result, sodium salts of these anions exhibit negative salting-out constants (Figure 1, bottom). It is important to note that for the half-capped GGG molecule, salting-out or -in is a net effect of interactions of both cations and anions with the backbone and the *C*-terminus, which cannot be interpreted simply in terms of ion–backbone interactions only.⁹

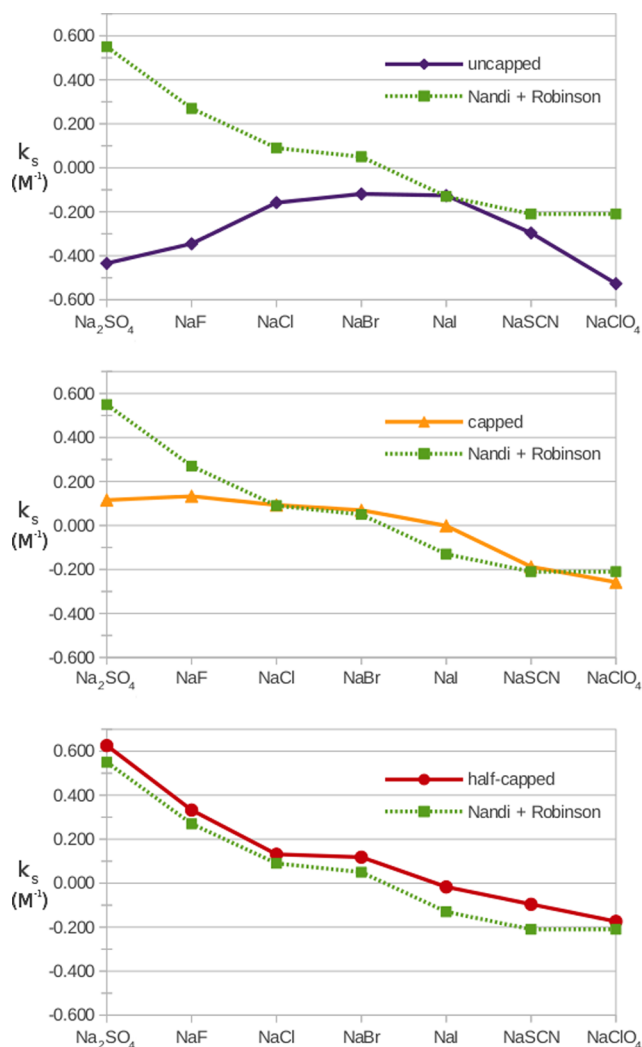


Figure 1. Salting-out constants k_s for uncapped, capped, and half-capped GGG in Hofmeister salt solutions, as obtained from MD simulations and compared with the experimental data.⁶

To focus on the Hofmeister effects of ions on the peptide backbone, the properly capped GGG should be considered. Indeed, by capping both termini, the ion–peptide interactions become dominated by those with the backbone. Sodium cations, as well as strongly hydrated anions, interact weakly with the backbone leading to modestly positive (close to zero) values of the salting-out constant (Figure 1, middle). Note that this is in clear disagreement with the Nandi and Robinson results, which again points to the fact that they did not, in fact, investigate the fully capped peptide.⁶ In contrast with strongly hydrated anions, weakly hydrated anions are attracted to the backbone, specifically to a site consisting of the amide NH group and the adjacent α -carbon,⁵ which leads to negative salting-out coefficients (Figure 1, middle).

As already discussed in our previous study,⁸ ion specific effects on uncapped GGG are dominated by the charged termini. This leads, particularly for strongly hydrated ions, to large negative salting-out coefficients (Figure 1, top), implying a salting-in effect. For weakly hydrated anions, additional attraction to the backbone plays an important role, which explains their negative salting out coefficients (Figure 1, top). As a result, there is no apparent Hofmeister ordering for

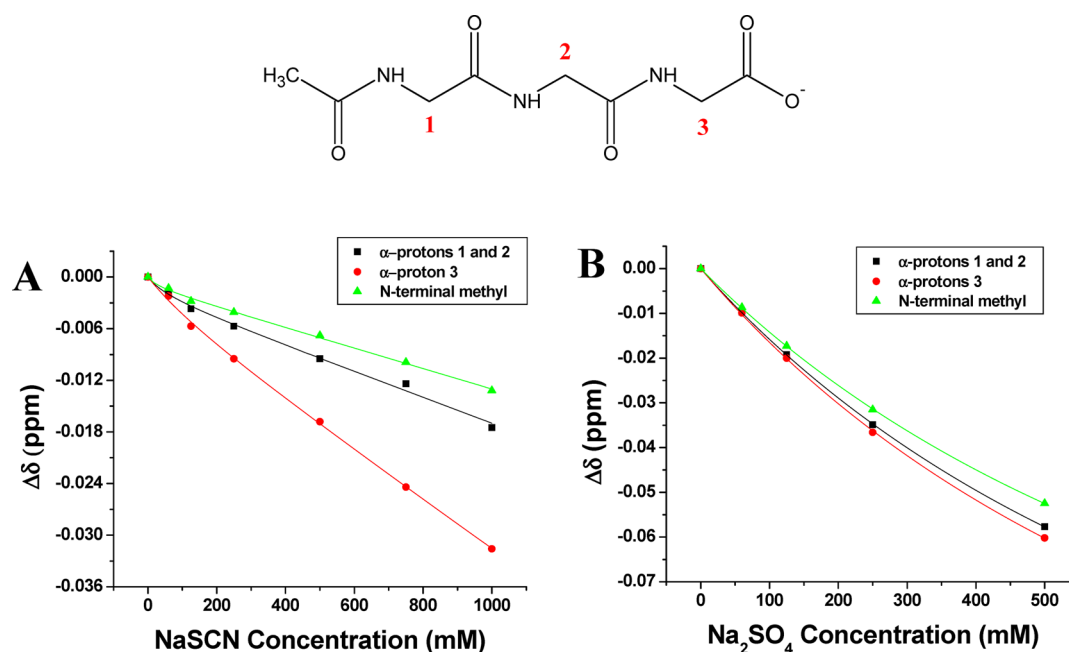


Figure 2. Relative chemical shift changes of the aliphatic protons of 50 mM *N*-Ac-GGG- CO_2^- (half-capped GGG) as a function of (A) NaSCN concentration and (B) Na_2SO_4 concentration. The data points are connected with lines as a guide to the eye.

uncapped GGG, with the corresponding curve for salting-out coefficients being nonmonotonous.

To experimentally verify the results found through simulations, we also performed proton NMR titrations of the *N*-capped peptide with NaSCN and Na_2SO_4 . The chemical shift changes of the three backbone methylene protons as well as the *N*-terminal methyl protons of the capping group were measured as a function of salt concentrations (Figure 2). As can be seen, the chemical shift decreased in a nonlinear fashion in all cases. Had binding occurred, following the interpretation in refs 5 and 8 one would have expected a curve with a negative second derivative rather than with a positive second derivative as seen here. In other words, none of the methylene units in the half-capped GGG backbone moieties displayed any apparent anion binding in the presence of NaSCN (Figure 2a). This is consistent with the anionic nature of the half-capped GGG, which should repel SCN^- anions compared with its fully capped and uncapped counterparts. Moreover, SO_4^{2-} gave rise to an even more positive second derivative (Figure 2b), which is consistent with even greater anion repulsion. Such results for the half-capped GGG molecule are in agreement with the solubility and MD simulation results previously described.

It should be noted that large salting-out constants, k_s , (Table 1) could potentially be associated with structural changes to the peptide or peptide aggregation.^{11–13} To rule out this possibility, we took FTIR measurements with half-capped GGG molecules in the presence of Na_2SO_4 and NaSCN as well as without any added salt. As can be seen, the peaks in the amide I band region occur at 1646 and 1723 cm^{-1} in the absence of salt (Figure 3). These bands do not change at all after 1 M NaSCN is introduced into solution. However, adding increasing concentrations of Na_2SO_4 leads to the rise of a very small new peak at 1592 cm^{-1} and the decrease in the higher frequency peak. Such changes are consistent with a very modest amount of NH hydrogen bonding to the carbonyl.¹⁴ This is again consistent with the strong salting-out behavior of Na_2SO_4 .

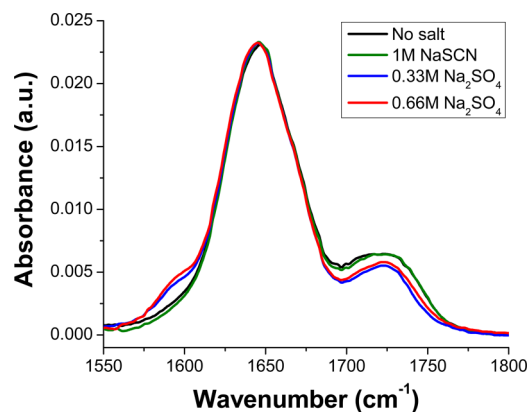


Figure 3. Attenuated total reflectance Fourier transformed infrared spectra (ATR-FTIR) of 100 mM half-capped GGG in various D_2O salt solutions. The spectra were collected with the same procedure and the instrumentation employed in refs 8 and 15. Peaks in the spectra can be assigned to amide I bands and combination bands of terminal carboxylate group and the amide carbonyl groups.^{8,16}

In summary, we have performed MD simulation supported by NMR and ATR-FTIR measurements that indicate strong ion interactions with the charged C-terminus of an aqueous peptide. The present calculations for fully capped triglycine show that strongly hydrated anions interact very weakly with the peptide backbone, while weakly hydrated anions exhibit an appreciable affinity to it. For the half-capped and uncapped peptide, these ion-specific effects get, however, convoluted with attractive and repulsive interactions by salt ions with the charged peptide termini. All of these effects are, of course, ion-specific as well.

METHODS

Three variants of the triglycine molecule were simulated: uncapped, half-capped (with the N-terminus terminated by an acetyl group), and fully capped (with the N-terminus

terminated by an acetyl group and the C-terminus by an N-methylamide group). Each of the three variants of the tripeptide was solvated in 1 M NaX (X = F, Cl, Br, I, SCN, or ClO₄) or in 0.333 M Na₂SO₄ (i.e., employing the same ionic strength for all of the solutions) and described with the polarizable version of the parm99SB force field.¹⁷ Compared with our previous studies,⁸ we changed the capping of the C-terminus, investigated additional salts, and evaluated the salting-out coefficients to be able to directly compare with the experiments of Nandi and Robinson.⁶

The simulation was performed with 2503 water molecules (POL3,¹⁸ except for NaF and NaClO₄ solutions, where we used the SPC/E¹⁹ model primarily due to convergence problems with the polarizable water force field), 1 tripeptide, 45 sodium cations, and 45 anions (or 30 cations and 15 anions for sulfate) in a 43 Å × 43 Å × 43 Å box. We applied 3D periodic boundary conditions with an 8 Å cutoff for long-range interactions using the particle mesh Ewald (PME) method.²⁰ All bonds containing hydrogens were constrained using the SHAKE algorithm.²¹ A Berendsen barostat and thermostat were employed to maintain ambient temperature (300 K) and pressure (1 atm).²² We analyzed the data for each salt solution collected every picosecond during a 100 ns production run after a 1 ns equilibration time with time steps of 1 fs, calculated using the AMBER11 program.²³ Salting-out constants were then evaluated using eq 1.

Spectra for NMR titrations with half-capped GGG were acquired on a 400 MHz spectrometer equipped with a 5 mm TXI probe (Bruker, Billerica, MA) at a temperature of 298 K using W5 watergate for water suppression.²⁴ Sample spectra were externally referenced to sodium 2,2-dimethyl-2-silapentane-5-sulfonate (DSS) (Cambridge Isotope Laboratories) in pure D₂O (99.9% D, Cambridge Isotope Laboratories) in NMR tubes adapted with coaxial inserts (Wilmad-Lab Glass). The DSS was always in the inner of the concentric tubes, while the peptide sample was in the outer tube to ensure that the DSS control was never exposed to the peptide or salt. Chemical shift assignments of the peptide were made by employing a 400 MHz spectrometer with [¹H,¹H]-NOSEY (100 ms mixing time) and [¹H,¹H]-TOCSY (100 ms mixing time)²⁵ as well as with [¹³C,¹H]-HSQC and [¹³C,¹H]-HMBC (J-filter range between 5 and 14 Hz) experiments.²⁶ TopSpin software (Bruker) was used for data processing.

The NaSCN and Na₂SO₄ employed in the ATR-FTIR and NMR experiments were purchased from Sigma Aldrich (St. Louis, MO). Na₂SO₄ was >99% pure, and NaSCN was at least 98% pure. 18.2 MΩ·cm purified water from a NANO pure Ultrapure Water system (Dubuque, IA) was used to prepare both salt and peptide solutions. Stock solutions of salts and peptides were made separately at double the desired concentration and mixed together in a 1:1 (volume-to-volume) ratio to obtain the desired sample concentration. The total peptide concentration in all experiments was 50 mM. The preparation of the half-capped peptide has been previously described.^{5,8}

AUTHOR INFORMATION

Corresponding Authors

*E-mail: psc11@psu.edu (P.S.C.).

*E-mail: pavel.jungwirth@uochb.cas.cz (P.J.).

Notes

The authors declare no competing financial interest.

ACKNOWLEDGMENTS

We thank the Czech Science Foundation (Grant P208/12/G016) for support. P.J. acknowledges the Academy of Sciences for the Praemium Academie award. J.H.L. acknowledges support from the International Max-Planck Research School for Dynamical Processes in Atoms, Molecules and Solids in Dresden. J.He. acknowledges funding from the Alexander-von-Humboldt Stiftung. P.S.C. thanks the National Institutes of Health (GM-070622) for funding. C.H. thanks the Welch Foundation for support (grant A-1658).

REFERENCES

- (1) Kirkwood, J. G.; Buff, F. P. The Statistical Mechanical Theory of Solutions 1. *J. Chem. Phys.* **1951**, *19*, 774–777.
- (2) Smith, P. E.; Mazo, R. A. On the Theory of Solute Solubility in Mixed Solvents. *J. Phys. Chem. B* **2008**, *112*, 7875–7884.
- (3) Hofmeister, F. Zur Lehre von der Wirkung der Salze. *Arch. Exp. Pathol. Pharmacol.* **1888**, *24*, 247–260.
- (4) Kunz, W.; Henle, J.; Ninham, B. W. ‘Zur Lehre von der Wirkung der Salze’ (about the science of the effect of salts): Franz Hofmeister’s Historical Papers. *Curr. Opin. Colloid Interface Sci.* **2004**, *9*, 19–37.
- (5) Rembert, K. B.; Paterova, J.; Heyda, J.; Hilty, C.; Jungwirth, P.; Cremer, P. S. Molecular Mechanisms of Ion-Specific Effects on Proteins. *J. Am. Chem. Soc.* **2012**, *134*, 10039–10046.
- (6) Nandi, P. K.; Robinson, D. R. Effects of Salts on Free-Energy of Peptide Group. *J. Am. Chem. Soc.* **1972**, *94*, 1299–1308.
- (7) Venkatesu, P.; Lee, M. J.; Lin, H. M. Transfer Free Energies of Peptide Backbone Unit from Water to Aqueous Electrolyte Solutions at 298.15 K. *Biochem. Eng. J.* **2006**, *32*, 157–170.
- (8) Paterova, J.; Rembert, K. B.; Heyda, J.; Kurra, Y.; Okur, H. I.; Liu, W. R.; Hilty, C.; Cremer, P. S.; Jungwirth, P. Reversal of the Hofmeister Series: Specific Ion Effects on Peptides. *J. Phys. Chem. B* **2013**, *117*, 8150–8158.
- (9) Pegram, L. M.; Record, M. T. Thermodynamic Origin of Hofmeister Ion Effects. *J. Phys. Chem. B* **2008**, *112*, 9428–9436.
- (10) Pegram, L. M.; Wendorff, T.; Erdmann, R.; Shkel, I.; Bellissimo, D.; Felitsky, D. J.; Record, M. T. Why Hofmeister Effects of Many Salts Favor Protein Folding but Not DNA Helix Formation. *Proc. Natl. Acad. Sci. U.S.A.* **2010**, *107*, 7716–7721.
- (11) Chi, E. Y.; Krishnan, S.; Randolph, T. W.; Carpenter, J. F. Physical Stability of Proteins in Aqueous Solution: Mechanism and Driving Forces in Nonnative Protein Aggregation. *Pharm. Res.* **2003**, *20*, 1325–1336.
- (12) Record, M. T.; Guinn, E.; Pegram, L.; Capp, M. Introductory Lecture: Interpreting and Predicting Hofmeister Salt Ion and Solute Effects on Biopolymer and Model Processes Using the Solute Partitioning Model. *Faraday Discuss.* **2013**, *160*, 9–44.
- (13) Cho, Y. H.; Zhang, Y. J.; Christensen, T.; Sagle, L. B.; Chilkoti, A.; Cremer, P. S. Effects of Hofmeister Anions on the Phase Transition Temperature of Elastin-Like Polypeptides. *J. Phys. Chem. B* **2008**, *112*, 13765–13771.
- (14) Barth, A.; Zscherp, C. What Vibrations Tell Us about Proteins. *Q. Rev. Biophys.* **2002**, *35*, 369–430.
- (15) Okur, H. I.; Kherb, J.; Cremer, P. S. Cations Bind Only Weakly to Amides in Aqueous Solutions. *J. Am. Chem. Soc.* **2013**, *135*, 5062–5067.
- (16) Kim, M. K.; Martell, A. E. Infrared Spectra of Aqueous Solutions 4. Glycine and Glycine Peptides. *J. Am. Chem. Soc.* **1963**, *85*, 3080–3083.
- (17) Wang, J. M.; Wolf, R. M.; Caldwell, J. W.; Kollman, P. A.; Case, D. A. Development and Testing of a General Amber Force Field. *J. Comput. Chem.* **2004**, *25*, 1157–1174.
- (18) Caldwell, J. W.; Kollman, P. A. Structure and Properties of Neat Liquids Using Nonadditive Molecular-Dynamics — Water, Methanol, and N-Methylacetamide. *J. Phys. Chem.* **1995**, *99*, 6208–6219.
- (19) Berendsen, H. J. C.; Grigera, J. R.; Straatsma, T. P. The Missing Term in Effective Pair Potentials. *J. Phys. Chem.* **1987**, *91*, 6269–6271.

- (20) Essmann, U.; Perera, L.; Berkowitz, M. L.; Darden, T.; Lee, H.; Pedersen, L. G.; Smooth, A. Particle Mesh Ewald Method. *J. Chem. Phys.* **1995**, *103*, 8577–8593.
- (21) Ryckaert, J. P.; Ciccotti, G.; Berendsen, H. J. C. Numerical-Integration of Cartesian Equations of Motion of a System with Constraints — Molecular-Dynamics of N-Alkanes. *J. Comput. Phys.* **1977**, *23*, 327–341.
- (22) Berendsen, H. J. C.; Postma, J. P. M.; Vangunsteren, W. F.; Dinola, A.; Haak, J. R. Molecular-Dynamics with Coupling to an External Bath. *J. Chem. Phys.* **1984**, *81*, 3684–3690.
- (23) Case, D. A. D.; Cheatham, T. E., III; Simmerling, C. L.; Wang, J.; Duke, R. E.; Luo, R.; Walker, R. C.; Zhang, W.; Merz, K. M.; Roberts, B.; et al. *AMBER 11*; University of California: San Francisco, CA, 2010.
- (24) Liu, M. L.; Mao, X. A.; Ye, C. H.; Huang, H.; Nicholson, J. K.; Lindon, J. C. Improved WATERGATE Pulse Sequences for Solvent Suppression in NMR Spectroscopy. *J. Magn. Reson.* **1998**, *132*, 125–129.
- (25) Wuthrich, K. *NMR of Proteins and Nucleic Acids*; Wiley-Interscience: New York, 1986.
- (26) Hadden, C. E.; Martin, G. E.; Krishnamurthy, V. V. Improved Performance Accordion Heteronuclear Multiple-Bond Correlation Spectroscopy - IMPEACH-MBC. *J. Magn. Reson.* **1999**, *140*, 274–280.