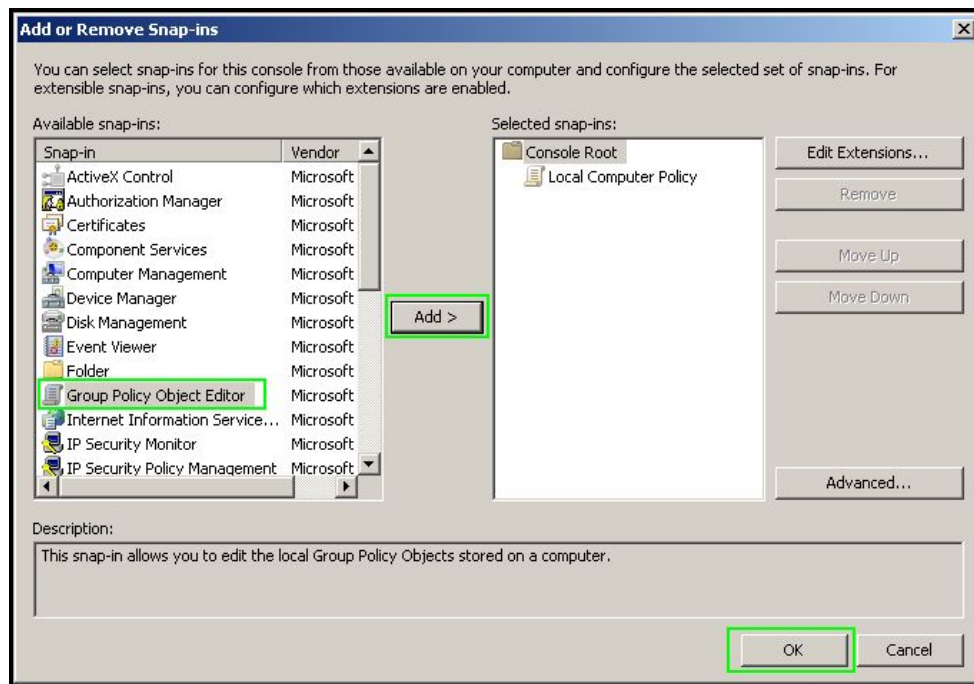


Windows 7 Group Policy

In Windows 7, Group Policy is used to define user and computer configurations for groups of users and computers. You may create a specific desktop configuration for a particular group of users and computers by using the Group Policy Microsoft Management Console.

A. Accessing the Group Policy Editor

1. Click **Start**, then type **mmc** into the search box and press Enter. This will open the **Microsoft Management Console**.
2. Under **File**, select **Add/Remove Snap-In**. Under Available snap-ins, click on **Group Policy Object Editor** and then click **Add >**.
3. In the window that appears, click **Finish** then click **OK** (note: If want to edit the Local Computer policy at other computers, click Browse to locate the group policy object that you want. Supply your user name and password if prompted, and then when you return to the Select Group Policy Object dialog box).



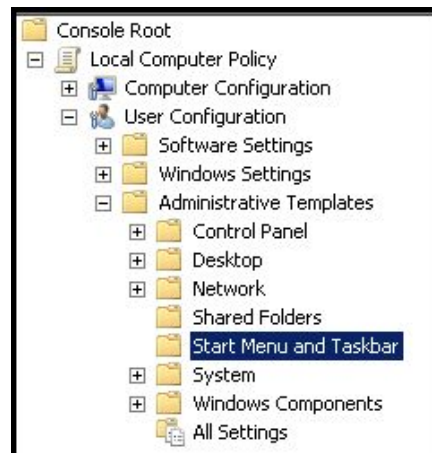
3. The selected Group Policy Object is now displayed in the Console Root as shown below:



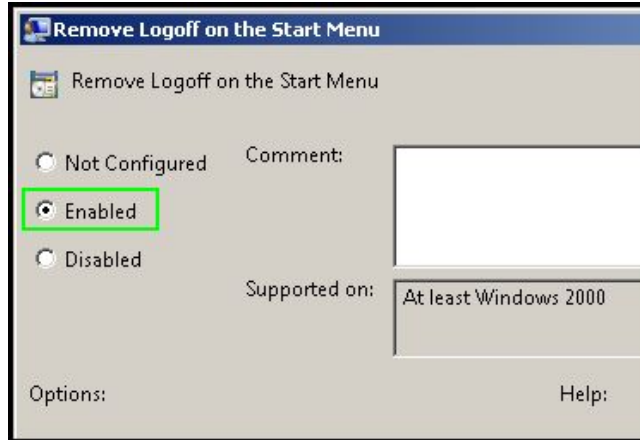
B. Example: Disabling Logoff Button from the Start Menu

The following example illustrates the use of the Group Policy Editor to customize the Windows 7 user interface. In this example, we will use the Group Policy Editor to temporarily remove the **Logoff** button from the Start menu. To do this, follow these steps:

1. To open the Microsoft Management Console, click **Start**, then type **mmc** into the search box and press Enter. Under **Console Root**, click the **+** next to **Local Computer Policy** to expand the tree.
2. Expand **User Configuration**, then expand **Administrative Templates**. Select **Start Menu and Taskbar**.



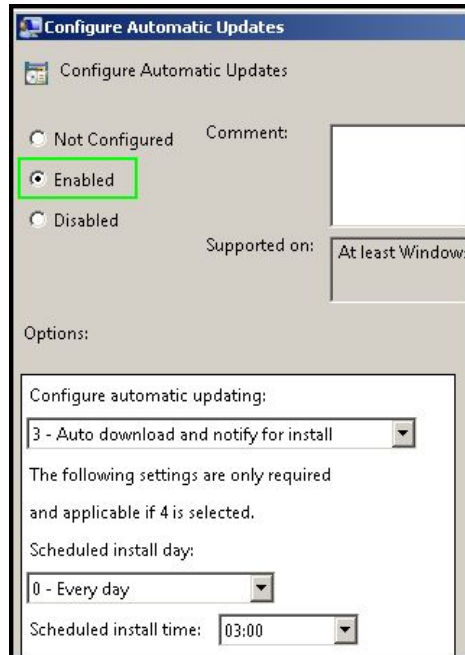
3. In the column on the right, locate **Remove Logoff on the Start Menu**. Click **Edit policy setting**. In the window that appears, select the radio button in front of **Enabled**, then click **OK**.



4. The policy has now been applied. To check it, click the Start button and select the arrow next to Shut down. Is Log off still an option?
5. Back in the Group Policy Editor, click to edit the policy setting for Remove Logoff on the Start Menu again. Switch the radio button back to **Not Configured** and click OK.
6. Check the Start menu once more. You should see that the Logoff option is now enabled.

B. Example: Windows Updates

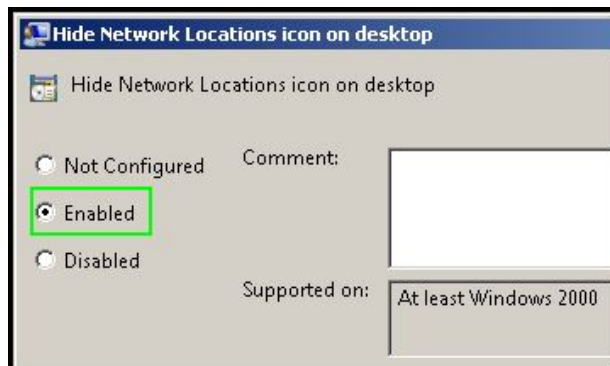
1. Open the Microsoft Management Console. Go to **Local Computer Policy** → **Computer Configuration** → **Administrative Templates** → **Windows Components** → **Windows Update**.
2. In the column on the right, select **Configure Automatic Updates**. Then click **Edit policy setting**.
3. In the window that appears, select the radio button in front of **Enabled**. Click OK. Automatic Updates are now turned on for the computer.



C. Example: Desktop Controls

Now we are going to edit the User Group Policy so that it will change the appearance of your Desktop.

1. Open the Microsoft Management Console. Go to **Local Computer Policy** → **User Configuration** → **Administrative Templates** → **Desktop**.
2. In the column on the right, select **Hide Network Locations icon on desktop**. Click **Edit policy setting**.
3. Select the radio button in front of **Enabled**, then click OK. The Network Locations icon will now be hidden on the Desktop.



Review Questions:

Apply the followings Group Policies, and then include your settings as a screenshot for each configuration item in your lab report.

User Configuration >Administrative Templates > Start Menu and Task Bar

- Remove Run from the Start menu
- Remove the clock
- Remove Shut Down from the Start menu
- Users are not allowed make changes Taskbar and Start menu

User Configuration >Administrative Templates > Desktop

- Do not show Computer icon on the Desktop
- Do not show Recycle Bin icon on the Desktop
- Disable annoying Desktop Cleanup Wizard

User Configuration >Administrative Templates > Control Panel

- Prohibit access to Control Panel

User Configuration >Administrative Templates > Network

- Users are not allowed to access network connections and make changes in TCP/IP settings

Computer Configuration >Administrative Templates > Windows Components > Windows Update

- Disable automatic updates

Computer Configuration >Administrative Templates > Windows Components

- Turn off auto play