



The GA-ZETTE

OCTOBER 2022

The Campus Newspaper for Penn State Greater Allegheny

VOLUME 16



FALL 2022 EDITION

Chancellor Campus Update	Page 2
PSUGA's Time Capsule	Page 5
Bees and Goats on Campus	Page 6/7
Jewish Cemetery	Page 8
Penn State Football Experience	Page 14
90 Seconds Under the Blue Umbrella	Page 18

Chancellor Campus Update: A Harvest of New Things

CARLIN WHALEN

Managing Editor

cjw6426@psu.edu

As Penn State Greater Allegheny's (PSUGA) interim chancellor, Dr. Megan Nagel has created many new opportunities on campus and sees a bright future ahead.

One of the new things Nagel created this year was the walk-n-talks. She mentioned that they have been going well. These walks take place all over campus every Wednesday morning from 8:15-8:45 a.m.

"We have visited the goats, been to Renzie Park, and Eden Park Boulevard... Each day we try to take a different route."

However, Nagel said no students participate in these walk-n-talks. It has only been faculty and staff. Because of this, she may consider moving these to later in the day to increase the involvement of students. Also, the walk-n-talks might be moved inside.

"In the winter, it's probably going to get cold and snowy." She will try to visit a new building each of these walk-n-talks.

With the sunset of the COMM degree, Nagel has formed a committee to help launch the new Multidisciplinary Studies Degree (MDS). "They (the committee) are working and pulling ideas together," Nagel said, in hopes to have something to market to new or current students by the end of the 2022 semester.



The Housing and Foods Services office door for the decoration contest

Nagel is excited to see what this committee comes up with.

Also, more good news: a new space has been identified for the Mon Valley Launch Box. It is still working its way

through many different approvals, but "I think it is a better location," Nagel said. "It is much more central, downtown and visible, so it is a way to advertise Penn State while doing the work of the Launch Box."

PSUGA is continuing to support many employees from the old building that was destroyed from the gas line explosion that occurred earlier this year.

As far as renovations, the office suite in the lower level of the Student Community Center (SCC) is expected to be completed by the time students come back for the 2023 spring semester. The sport court is still being worked on and the library is planning on creating a "maker space" for 3D printers and related things.

"We have the equipment, but we just need to find space in the library to put it," Nagel said.

Campus engagement has been problematic in the past, but the engagement this year has seemed to improve.

As far as the faculty and staff, there has been a cornhole tournament and a fantasy football league. They will also have a fall door decorating contest for all the offices on

campus, while also incorporating a night of trick-or-treating for the students on Oct. 31.

For students, they seem to be slower on getting back into engagement, but Nagel is encouraged that it will increase in the future.

"I think we are getting there," Nagel said. "It is a slow process, and we want to make sure everyone is comfortable, but I am getting the sense that people are ready."

After being PSUGA's interim chancellor for nearly six months, Nagel is still enjoying her time in this role. "Every day is different, but it has been really fun interacting with the faculty, staff and students in this capacity."

With no update on the search for a new chancellor, she is not sure if she would want to permanently continue as the chancellor. For her, it is like a "game time decision" on whether she would apply, although she does miss teaching chemistry to the students.

"I had a student who I had in class stop in and say hello," Nagel said. She gets excited whenever students decide to stop in and talk with her.

FRONT COVER: The U.S. Senate seat in Pennsylvania is front and center in the Nov. 8 election with Democrat, John Fetterman (left), squaring off against Republican, Dr. Mehmet Oz (right), in one of the nation's hotly contested races. The pair meet in a televised debate on Oct. 25 at 8.00 p.m. Photos: Mandel Ngan and Rachel Wisniewski, Getty Images.

Let's Talk About Mental Health: Awareness, Caring, Compassion

MELANIE MCGINNISS
Contributing Writer
mum670@psu.edu

“Globally, men are more than twice as likely to die by suicide than women. Despite these higher rates of suicide, men have lower reported rates of depression, a significant suicidal risk factor,” according to an article by the Men’s Health Network.

Penn State Greater Allegheny (PSUGA) campus’ newly appointed Mental Wellness Counselor, Kevin Debow, said that “a lot of people don’t get help for mental health because they feel that it’s a sign of weakness or someone will talk about them...a whole lot of negative reasons why... particularly with men.”

According to an

article by Frontiers in Psychology, “traditional ideas of masculinity are often seen as a cause of this phenomenon.”

Debow said that sometimes those who are not struggling with mental health will look at those who are struggling and

think, “I’m okay, why aren’t you okay?” Problems are then invalidated and people who are genuinely struggling may feel like they just have to make do. “Often times it’s more complex than just making it work,” Debow said, “it’s okay not to be okay.”

This October for World Mental Health Awareness Month, Debow hopes to see “more awareness, more de-stigmatization.”

“I’ve always worked in mental health,” Debow said. He has plenty of experience from working at Pittsburgh Mercy, Holy Family Institute, and Pittsburgh Pastoral Institute. Also an adjunct lecturer since 2010, he wants students to know that he’s here and ready to be a “source of resource” for students.

Debow saw that there was no counselor at PSUGA for about a year. That is why he applied for the position and has been trying to re-engage students with counseling services since August of this year.

During the time that the counseling position was vacant, Nurse Jennifer Ross was available to students as a resource and to guide students to virtual sessions with the counselors at the Penn State Fayette and Harrisburg campuses.

“The students were stressed,” Nurse Jen said, “I was glad they felt comfortable enough to at least reach out to me.” But she also said that students seem to be getting better at de-stigmatizing mental health. Everyone deals with struggles in mental health, especially since COVID-19.

Debow said that he has mostly seen anxiety and depression in students due to the stress of the pandemic. “We all have roadblocks that pop...it is good to always check in

with someone.” He said that even someone that doesn’t believe that they need guidance can probably benefit from counseling.

“I would hope that you guys would talk more with your peers...if you’re more open with it with

your peers, maybe your peers will be more apt to be open with it,” Nurse Jen said.



Debow said that the campus can bring more awareness by messaging and spreading the word through speakers not affiliated with campus counseling services. He is trying to coordinate events to focus on stress and time management but still needs to discuss them with the chancellor.

Debow welcomes students to schedule counseling appointments with him via e-mail at kld31@psu.edu or by calling his office at (412)-675-9475. Students are also welcome to visit him at his temporary office in room 210 at the Student Community Center (SCC).

For emergency crises, call Resolve Crisis Services at 1-(888)-796-8226 or the Penn State Crisis Line at 1-(877)-229-6400.

A 24/7 crisis text line is also available to students if they text “LIONS” to 741741.

TOGETHER

for Mental Health



Campus To Sit Out THON for 2023

Lack of funding cited as cause

YOUSUF IBRAHIM

Staff Writer

yli5000@psu.edu

When students, national media, and families with children in care for all forms of pediatric cancer, take to the Bryce Jordan Center next Feb. 17-19 for the annual THON weekend, the 46-hour dance marathon will be void of Penn State Greater Allegheny (PSUGA) dancers for the first time in years. Due to lack of funding from last year, the campus will not be able to send any dancers.

Jennifer Lynn “Nurse Jen” Ross, PSUGA’s health services coordinator, has been working with THON since 2015. “We

have to raise \$3,000 just to have one dancer. So, it’s hard—sometimes we don’t have enough kids, so it’s just as hard to raise even \$3,000 and come up with new ideas (for fundraising),” she said.

So far, the campus THON planning crew has come up with a few ideas for fundraising-- Kennywood Fright Night, a candygram and concessions at basketball games. A more ambitious idea “they talked about was possibly doing a dodgeball tournament, probably in January,” Ross said.

If they raise \$3,500 they’ll be able to enter a lottery in which they could possibly get two dancers for THON, but it seems to be a lofty goal.

“We’re still going to THON even if we don’t have any dancers,” Ross said, “just so those that have contributed and raised money and worked to try to make it to THON go and actually see what THON’s about. Some of the students have never been there, have never experienced it.”

The THON team holds meetings every other Friday in Frable 120, during Common Hour, with the next meeting set for Oct. 21.

Ross said students unfamiliar with THON should come to the meetings, and she is convinced that seeing THON in person will spark that passion.

Ross recalls her first time attending THON. “It’s just the amount of student participation... some of the cancer survivors are down on the floor, some of the kids that currently have cancer...it gave me chills.”

According to the THON website, \$203 million has been raised for the cause over the years, with 16,500 students having volunteered and 4,800 families helped through the event. THON is the world’s largest student-run philanthropy.

Photo courtesy: Thon.org

THON™

PSUGA's "Quantum Leap" Preserves History

CARLIN WHALEN

Managing Editor

cjw6426@psu.edu

Within the next couple of weeks, Penn State Greater Allegheny (PSUGA) plans on installing a time capsule in the Ostermayer Lab Building, a time capsule that will remain unopened for the next 50 years.

Dan Cella, the director of finance and business, said, "This was originally supposed to be installed

when the Ostermayer Lab Building was renovated in August of last year (2021)." The plaque, however, that was supposed to go over the hole in the wall on the first floor entrance was not big enough, so everything was put on hold, he added.

Once the plaque is ready to install, everything will be set to go.

The actual time capsule itself is not that big. Cella estimates it to be roughly 6x4x16

inches. That is not, however stopping him from filling the capsule with a lot of items that represent current times. Inside will be COVID masks, a COVID-19 test kit, an iPad and charger, a Penn State ID card, tickets from the Pittsburgh Pirates games, three editions of *The GA-Zette* newspaper, and a few other assorted campus items.

All these items were picked for a reason. Within the next 50 years,

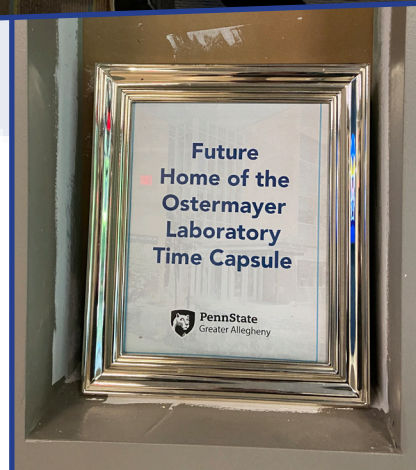
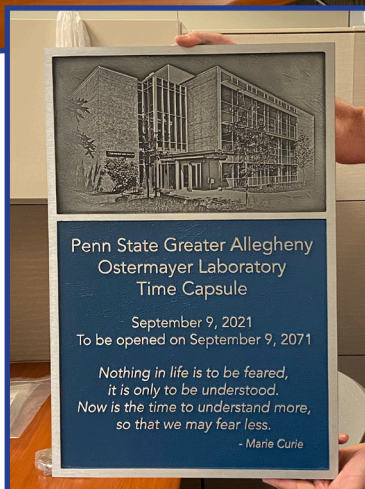
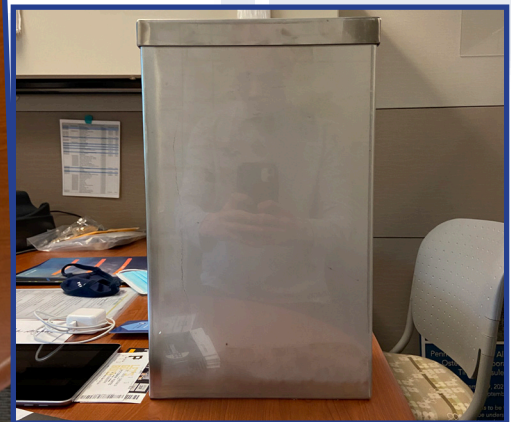
many things are going to change, and everything inside represents something from today. Who knows... some of these items might not be relevant 50 years from now.

"Whoever opens this capsule can get a feel for what happened previously (the past)," Cella said.

There will be a ceremony for the actual installation of the time capsule in the near future.



Time capsule photos, clockwise, from top left: Items for inside the capsule; the time capsule storage box; hole in the wall in the Ostermayer Lab Building; the capsule plaque to seal the capsule in the wall. (Photos courtesy: Carlin Whalen)



May-Bee Next Spring - Apiary to Come

MELANIE MCGINNIS
Contributing Writer
mum670@psu.edu

Galen Grimes, associate professor of Information Sciences and Technology at Penn State Greater Allegheny (PSUGA), has been waiting for about two-and-a-half years to bring beehives to the campus for “students to understand the dependency we have on honey bees.”



“They supposedly pollinate somewhere between 50 and 70 percent of all the food we eat,” Grimes said, “so we’d be at a pretty bad fix if we lost bees.”

Because the bee population has been on the decline for decades (from environmental issues, pesticides and diseases), it’s important to know the effects and how to help the problem.

Grimes started beekeeping after he took a course in beekeeping (which is recommended when starting out as a beekeeper) and purchased

his first two hives from the Pennsylvania State Beekeepers Association (PSBA). Since then, he has been keeping bees for years. He thanks Director of Strategic Planning & Communications, Victoria Garwood—who keeps bees with her father—for introducing him to beekeeping.

With the addition of an apiary (a place where bees are kept; a collection of beehives) on campus, students who want to learn about bees and their importance to the food chain and the environment will be able to gain hands-on experience through an apiary club.

Students may even learn about the honey extracting process, and there’s no need to worry about getting stung either. “That’s what the (bee) suits are for,” Grimes said.

Grimes initially planned to introduce the two hives (a minimum of about 70,000 to 80,000 bees in each hive) along with the apiary club, to the campus in April 2020. All of this was going to be added to the campus’ sustainability program until the pandemic hit.

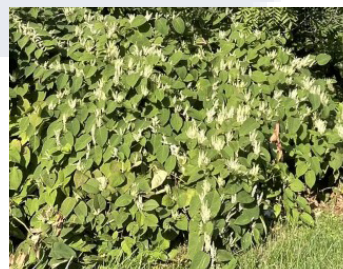
Since then, the Penn State professor has been taking care of the growing hives that started with one group of bees at his home, as previously reported last May.

Although it is still undetermined when the apiary will be ready, Director of Finance and Business, Daniel Cella, confirmed that it would be built by the maintenance staff near the building behind the First Evangelical Free Church.

“When you bring a beehive in some place, you want to make sure that there’s sufficient pollen and nectar for them to gather...not so sure about what they’re going to find in the spring,” Grimes said.

He noticed that the campus conveniently has “tons” of Japanese knotweed (*Fallopia japonica*: invasive plant species that bees love) by the soccer field that will be a sufficient source of pollen for the bees during the fall and winter.

For the safety of the bees as well as the campus community, Cella said that a fence needs to be built around the hives. Since there have been reports of a bear near the campus, the fence might have to be an electrified one.



Japanese knotweed located next to the soccer fields



Cella stated that this is still being considered and that maintenance may already have fencing material that will “do the job.” He also shared that this project does not have specific funds earmarked and will be done through campus maintenance activities.

“The whole beekeeping thing, I used to work at Bayer, the aspirin company, and they had beehives on campuses. It’s something that’s really picked up in the area and across the country...it’s for providing students with more experiences,” Cella said.

Grimes hopes that the bees can be brought over for next spring. “I’ve got to get the maintenance guy because I have to load them in a truck...you have to wait until it gets dark, or the bees go in the hive. You seal up the hives so they can’t get out, you have to use straps around it to hold the components together and then put them in the truck,” Grimes said.

Photos courtesy: Melanie McGinniss

Goats Ate Grass at Greater Allegheny

MARIAH GREENE
 Contributing Writer
 mmg5949@psu.edu

“To sit there and watch the abundance of vegetation a day eaten in a really short time frame really surprised me,” said Dan Cella, director of finance and business at Penn State Greater Allegheny (PSUGA). Thirteen goats and a donkey were brought to campus by Allegheny Goatscape to eat three quarters of an acre of grass from Sept. 26 through Oct. 3. Cella is responsible for ordering the goats to campus where they were placed on a hill leading up to the Wunderley Gymnasium.

Allegheny Goatscape “fenced the goats in an overgrown area and their role was to eat the vegetation and basically thin it out in a sustainable way so that the overgrown area wouldn’t start to infringe upon the campus,” Cella said.

In two weeks a herd of thirteen can eat an acre and a half. “I’d go and visit them every day and it’s amazing to see the difference in the vegetation,” Cella said.

He mentioned the goats were surrounded by an electrical fence which is supposed to keep them contained in the area. “They’ll get pretty close but they know not to touch it..it’s a very low



best at defending themselves. Donkeys act more protective, than aggressive, “but if a human is doing something to a herd it is their job to protect them,” Cella said.

Cella said the goats come twice a year. They were here in May and now the fall, “when students are here because by the time the semester is over in early May, there’s hardly any vegetation, so often the students miss them in the spring so they catch them in the fall,” Cella said.



There is a possible concern for outnumbering predators, however. “I’ve never heard of that being a problem..and I think areas like this typically don’t have too many predators that are that aggressive,” Cella mentioned. He added that it is a possibility that a herd of foxes could potentially outnumber the goats leaving the donkey caught off guard.

Photos courtesy: Mariah Greene



Allegheny Goatscape conducted a site visit by surveying an area and then proposed a quote for vegetation that was accepted by the campus.

pinch, but if a goat’s trying to crawl over it they feel it more so it keeps them [inside],” Cella said.

The donkey’s purpose is to protect the goats who are more docile and aren’t

Allegheny Goatscape checked on the goats almost everyday to see how they were doing and the campus’s maintenance staff gave them water daily.

White Oak Volunteers Restore Long-Lost Jewish Cemetery

MELANIE MCGINNISS
Contributing Writer
mum670@psu.edu

What can be done to make a positive impact in communities amidst negativities? Whether it's the loss of a loved one from COVID-19, a natural disaster like Hurricane Ian or the effects of inflation, it is easy to be consumed by negative thoughts and



emotions. But these are times of need, and people like Mark Pudlowski show that there is always an opportunity to help and make a positive change.

About three years ago, Pudlowski, founder of the nonprofit Family of God Biblical Reasoning Prayer Center, came across a problem. When he was golfing in the White Oak area, he thought he noticed a tombstone hiding in about eight feet of weeds and bushes.

Pudlowski dove deeper. He stopped to get a closer look and found out

that there were in fact 14 Jewish headstones, dating back to 1902, within the mess of overgrown weeds.

It was the Ahavas Achim Cemetery of a small congregation (Ahavas Achim) that possibly broke off from a local synagogue around the 1890s.

The cemetery is located at 2090 Ripple Road on the edge of a hill right

off the side of the road. Many factors made this cemetery easy to miss. There's only one entrance to the cemetery from behind on Center St., it sits on the edge where there is also a brick retaining wall, and the small group of headstones were surrounded by trees and plants all around the hill.

"We had to do something, but I didn't know who the 'we' was," Pudlowski said. He addressed the issue to his men's group at the counseling center and, conveniently enough, one

of the member's sons, Daniel Lia, was an Eagle Scout at the time looking for a required project to complete.

Lia and his father planned out the project to clean up and renew the abandoned Jewish cemetery. Together, along with Pudlowski and some more volunteers, they spent two weekends fixing up the cemetery.

"It's definitely different doing something for cemeteries...pretty much honoring the dead," Lia said. Lia and his father gathered people and equipment (costing about \$3,500 with no assisted funding, according to an article from the Pittsburgh Jewish Chronicle) to weed-whack, shovel and put down plastic and mulch. Then came the process of resetting the tombstones by digging them out and



re-cementing them in.

Pudlowski, a Christian, even built a Star of David for the cemetery. At the cemetery today, stones are placed on top of the headstones and offered as prayers. "You can too... if you go up there and just say 'in honor of these people,' it's no reflection on nothing except your heart," Pudlowski said.

"What if that was your dad, your mom?" he asked.

(Continued on next page)



(Continued from page 8)

The ability to empathize is valuable when it comes to making a change in society. What means everything to one person can go unnoticed by another.

Pudlowski received a letter in the mail from a man in Uniontown who had driven past the cemetery before while searching for his father's cousin for 40 years. Because the volunteer group made the headstones finally visible with all of

their Aramaic writing, the man was able to find his relative's grave after all of those years. "He said he couldn't thank me enough," Pudlowski said.

The process of change comes in three steps as Pudlowski says: "Identify a problem, make a plan, implement the plan, that's what we have to do for everything."

"Go to Giant Eagle, walk there...how many cigarette butts or pieces of paper you're gonna see on this road from here to there, or from here



to Penn State," he said. Now, what can be planned to solve the problem of smoking or littering in the community?

Pudlowski's community efforts are not limited to this one act of service. At his office located just a few minutes away from the cemetery, he offers free counseling and help to anyone. "We feed the veterans, Easter, Christmas, Thanksgiving, holidays...the Marines come down and pick up food...we have a food pantry where I attend church," he said.

Pudlowski even welcomes students at the Penn State Greater Allegheny (PSUGA) campus that need help

with food to reach out to him.

The Family of God Biblical Reasoning Prayer Center is just a few minutes away from PSUGA, at 1133 Lincoln Way, White Oak, PA 15131. Pudlowski can be contacted for appointments at (412)-979-1286 or by email at fogpgh@yahoo.com.

Photos courtesy: Melanie McGinniss and Mark Pudlowski



Renew your FAFSA for Fall 2023!

The 2023-2024 FAFSA application is available on October 1!

Don't miss out on financial aid opportunities!
Many sources of aid are awarded to students who apply early.

To apply, visit www.fafsa.gov using your 2021 income!
Penn State FAFSA Code: 003329



To view steps on how to complete or renew your FAFSA, Scan the QR code!

FREE
STORE 15132

OPEN HOURS:

MONDAY 12PM-2PM
TUESDAY 3PM-5PM
WEDNESDAY 12PM-2PM
THURSDAY 3PM-7PM
FRIDAY 12:30PM-3:30PM

LOCATED IN FRABLE BASEMENT

ARTS & ENTERTAINMENT

EVIL DEAD, THE MUSICAL!

YOUSUF IBRAHIM

Staff Writer

yli5000@psu.edu

Just in time for Halloween...Pittsburgh Musical Theatre (PMT) presents *Evil Dead The Musical* every weekend at 8:30 p.m. until Oct. 22 at the West End Canopy on 327 South Street. The musical adapts content primarily from the first *Evil Dead* film, while taking certain aspects from other films in the franchise, and giving it all

unleash an evil force that turns them all into demons. Blood flies. Limbs are dismembered. Demons tell bad jokes ... and all to music," according to the promotion from the Pittsburgh Cultural Trust.

The West End Canopy is an outdoor venue, with only a plastic tent shielding the audience from the wind. As such, it is advised that audience members dress for the weather. There is a bar and three port-a-potties, as well as a merch stand that sells

ly. As a result, audience members should bring along their children and little siblings at their own risk.

That night, the tent was packed. If you're seated near the back like I was, you might have to stand to see some of the action going on near the front of the stage. Sound wise, however, you'll have no problem hearing the actors' lines. Nick Mitchell, the director of the production, says that sound is very important to him. He recalls the first time they did the production.

"We were using smoke [machines] and between the orchestra and the microphones and the hazers and the smoke, I had written: 'I can't hear. I can't see.' And then it just started degenerating like Jack Nicholson in *The Shining*, and it's like, 'I can't see! I can't hear! I can't f***g see! I can't f***g hear!'"

Thankfully, they were able to get it to work before the show, but Mitchell values the audience being able to see and hear all the action going on. He gives props to sound designer, Brendan McGhee, technical director, Jon Sage, and COVID safety manager, Kevin Kocher.

The set design is low budget, which, rather than taking away from the show, adds an opportunity for comedy. The show balances a line between extreme self-awareness and a gripping level of immersion.

Mitchell says that he saw a production that was relatively high budget, which he didn't quite like. "[*The Evil Dead*] was done by Sam Raimi and his friends in the woods on a shoestring budget the first time, so let's lean into that, and I can show them how the sausage is made. If we're spending more than \$9.99 for an effect, we're getting ripped off."

He added that this wasn't a completely literal statement, as they did not look to spare expenses in ways that would compromise the quality of the show, but that they did "want it to look as easy and slapdash as possible, which actually takes a pretty talented team to have a polished production that looks low budget like that," Mitchell said.

The songs were both pleasing to the ear and funny at the same time. Many songs that attempt this balance fail miserably, so I must commend the musicians.

(Continued on next page)



a highly comedic twist.

In short, the show takes all the elements of the cult classic films *The Evil Dead*, *Evil Dead 2* and *Army of Darkness* and combines them "into one of the craziest theatrical experiences of all time... five college students go to an abandoned cabin in the woods and accidentally

sweaters, so all the basic needs of the audience are met.

The show starts with a man warning the audience that the show contains foul language, sexual comments and blood. The film the show is based on is rated NC-17, and the show does not attempt to make it more child-friend-

(Continued from page 10)

Each of the performers could be the lead singer of a hard rock band from the 70s and sell platinum while doing it. It's hard to choose a favorite, but Joseph Fedore, who plays a minor character named Ed, had a fantastic song in *Bit Part Demon*.

Due to the close proximity between the audience and the stage, there is a level of intimacy here that is unattainable in a higher budget show that takes place on a grander stage. The audience and the performers feel in sync with one another. Mitchell described the relationship as "symbiotic," which is a sentiment I agree with. That said, some audience members can take it a little too far.

Mitchell says that occasionally, an issue the production will experience is that an audience member will "feel that connection so much that they'll look up these actors on their own Facebook and Instagram pages and feel closer to them than they need to, so we encourage our actors to protect themselves," he said.



Thus, it is advised audiences not get too attached, and remember that though the actors may be great at their jobs, they are not the characters they play.

The show contains a profuse amount of blood, which no warning could have prepared me for. It seems there isn't an action these characters can take that doesn't result in a horrifying injury of some kind.

Mitchell says that Makeup and Special Effects Designer, Christopher Patrick, "uses a compound that actually has a detergent base to it with a stabilizer in there. So it's almost literally soap, but again it's safe for the eyes, cause (the character) Ash gets plenty right in the face. In addition, it washes out of clothes, so if you're brave enough to handle it, try to get a seat near the front.

According to Mitchell, only two actors are present in the current production who were present in previous ones. "So this is the third time that we've done it, and this time we've actually made it a part of PMT's professional season which allowed us to use more union and equity contracts than we had before."

Rest assured, however, if you want to be a part of a PMT production, auditions are open to anyone. While they are required

to use a certain number of actors from the Actors' Equity Association, which is a union for theatre actors, those actors can be cast anywhere, opening the floor to anyone with the right skills to take on the role.

"Many of these people are professionals who just haven't joined a union," Mitchell said. "A few have 9 to 5 jobs. We have a lawyer in our cast. We



have a now-stay-at-home mom who is a former insurance agent in our cast."

While performances are generally pretty consistent, occasionally, some things change. Mitchell says of Brett Goodnack, who plays main character Ash: "He will give the exact same level of performance every night like a machine. However, if a moment happens that's different, he'll absolutely stop and point it out. It's like watching SNL. No one's scripted to break, but when they do, the audience just kind of feels in on it a little bit, and we have that freedom to

accept moments as they arise, whether expected or unexpected," he said.

For those who are unfamiliar with musical theatre, horror and the *Evil Dead* franchise, I'm in the same boat, and this was one of my best experiences. "This is the show to take people to who don't like musicals and don't like horror movies," Mitchell said.

The director cautioned,

however, "Now, that said, if you take somebody to this who says they hate musicals and this is their first musical and they love it? Well, they're pretty much ruined, because they may never find this again. It is this Venn Diagram that overlaps people who like musicals, people who like comedy, people who like horror movies, and we just get this incredibly eclectic audience," Mitchell said.

Photos courtesy:
The Pittsburgh Musical Theater

STUDENT OFFICES



The office suite in the basement of the Student Community Center (SCC) is being remodeled to open in time for Spring, 2023 (Photo courtesy: Carlin Whalen)

OCTOBER IS BREAST CANCER AWARENESS MONTH!

CLUB ADVERTISING

Does your organization want to promote its event or program in the newspaper?

The GA-ZETTE offers complimentary, no-cost display ads to any university sanctioned club or organization.

Space is limited! Contact the campus newspaper at ga-zette@PennStateOffice365.onmicrosoft.com

LETTERS TO THE EDITOR

The staff and management of *The GA-ZETTE* welcome letters to the editor by writing to rum31@psu.edu.

Please include your full name, PSU email, address, and phone number to verify.

Missing contact information will result in non-consideration of your article.

SEATTLE



PennState
Greater Allegheny

Student Affairs

ALTERNATIVE SPRING BREAK 2023

\$150 ALL INCLUSIVE

EMAIL
LAW315@PSU.EDU
FOR MORE INFO

MAR 4-MAR 11





Voter Registration & Information

- How and where to vote
- Candidate Information
- Forms for registration
And More!

Located in the SCC
Wednesday, October 19
12:15-1:15

OPINION: From Where I Sit - A Commonwealth Campus Perspective of PSU Football

CARLIN WHALEN

Managing Editor

cjw6426@psu.edu

On Sept. 24, I visited Penn State University Park (UP) to attend my first-ever Penn State football game and it was something I have never experienced before.

The Penn State Nittany Lions played the Central Michigan Chippewas and beat them 33-14 to keep an undefeated record of 3 - 0.

My dad, a few friends who already attend Penn State UP, and I had a very fun day.

We parked about a mile away in the Nittany Parking Deck and we walked to Beaver Stadium. As we were walking, there were so many others doing the exact same



My dad and I before we began walking to Beaver Stadium



My friends and I in the student section at the Penn State football game against the Central Michigan Chippewas

thing and everyone was decked out in their Penn State gear.

I wore a PSU sweatshirt as well as t-shirt for when it got too hot. Additionally, I bought a PSU bucket hat to block the sun from my head and neck.

We continued walking and eventually could hear faint music. As we inched closer and closer to the stadium, it grew louder. It was kind of crazy how far away you could actually hear it.

Closer to the stadium, there were dozens of tents lined up where lots of people were tailgating. Unfortunately, we did not attend the tailgate, but I feel like that would have been an extremely fun experience.

From there, the fun

actually began. The streets were lined with people, and we had to find our way to the gate. In fact, there were so many people, I almost got lost from my group a couple of times.

I have been to my fair share of Pittsburgh Steelers games, but this was nothing compared to what I experienced at the Penn State game. Acrisure Stadium, the home of the Pittsburgh Steelers, has a maximum capacity around 68,000 guests.

At Beaver Stadium, there are a whopping 106,000 plus seats, which is insane and almost all the seats were filled! I don't think I have ever been in an area with that many people before.

After we got into the stadium, we went to the

student section, which is something I had never experienced either. For the entire game, except for halftime, we stood on top of the bleachers cheering on the Nittany Lions.

Lots of students had these pom poms and they would use them throughout the entire game, including when the Nittany Lions kicked off, had a huge play, scored a touchdown, or just for any other reason.

I wish I had one to use throughout the game. My guess is students received them from previous games like the "White-Out" or "Stripe-Out" games and they kept them to use at upcoming games.

Comparing those pom poms to a Steelers game, they reminded me of

(Continued on next page)

(Continued from page 14)

“The Terrible Towel.” They seem to be used for similar reasons.

Also, the student section was very loud at times, especially when the opposing team had their backs to the student section.

Although I really enjoyed the game, my favorite part was when they played “Sweet Caroline” by Neil Diamond on the loud speaker and the entire student section sang it. Actually, the people controlling the music turned it off and the students kept on singing, which was

really interesting. I have seen a lot of videos on the Internet about this and always wanted to experience it.

I am going to do everything I can to buy season tickets when I move up to main campus next year so I can continue experiencing the energy and excitement from PSU football. Also, I highly suggest for all Commonwealth Campus students to attend at least one PSU football game because it is such an unforgettable experience.

Photos Courtesy: Carlin Whalen



THE GA-ZETTE, the official campus newspaper of Penn State Greater Allegheny, is published by students for students, faculty and staff of the campus. The paper is printed seasonally, but is also posted and updated bi-weekly, on a digital platform at sites.psu.edu/gazette.

Address:

4000 University Drive, McKeesport, PA 15102

Phone: 412-675-9025

Managing Editor/Photo Editor:

Carlin Whalen, COMM

Staff Writers:

Yousuf Ibrahim, ACC '21, COMM

Contributing Writers:

Melanie McGinniss, COMM

Mariah Greene, COMM

Production Support:

Nicholas Smerker, Media Commons

Administrative Support:

Connie Surman

Jayne Gralewski

Faculty Advisor:

Rosemary Martinelli

*The thoughts and comments of **The GA-Zette** are those of the individual writer and do not necessarily reflect the opinions of the administration and management of Penn State Greater Allegheny or The Pennsylvania State University, at-large. Editorial decisions rest with the staff and management of **The GA-Zette**.*

***To Our Readers:** The GA-Zette welcomes your letters, poems and guest opinion columns. All submissions are subject to editing and may appear in both our print and digital editions. Submission does not guarantee publication. To be considered, please include e-mail and phone number for verification.*

Send to:

ga-zette@PennStateOffice365.onmicrosoft.com

OPINION: From Where I Sit - My Thoughts on the British Monarchy

YOUSUF IBRAHIM

Staff Writer

yli5000@psu.edu

The death of the Queen of England has brought to light everything detestable about British society. Because of King Charles' decision to make the Queen's funeral a bank holiday, thousands of medical appointments had to be canceled or postponed. Many of those medical appointments are for cancer patients. Many of them are for pregnant people. Many of the hos-



pital staff who would be more than happy to come in to treat their patients would not be able to because the schools are out, and they're going to have to stay home and take care of their kids.

And this is after a record-breaking high of 6.8 million people awaiting medical treatment in the UK as of July 2022, all of this data/stats according to



The Guardian.

In addition, the Queen's funeral cost millions of pounds in taxpayer money. British children are at risk of dying from hunger and cold, and the royal family has liquid assets in the dozens of millions. This decision is a moral travesty.

Many are asking whether the monarchy has a right to exist, even in this "constitutional" capacity. The answer to that question is no. This constitutional monarchy receives a sovereign grant every year paid for by taxpayer money. Last year, that came up to a total of over 86 million pounds, according to the BBC.

For what? Why should an entire family be entitled to the tax money of millions just because they have special blood? Imagine if we in America paid the Kardashians \$474 million a year in taxpayer money (\$1.44 per US citizen), just because. That would almost be better, because the Kardashians don't represent a glorified history of

blood and terror.

Some might say that the British royal family has no real power, but to this there are a few rebuttals. The first is that the royal family absolutely has sway in policy making. The Black Spider Memos show then-Prince Charles using his influence on then-Prime Minister Tony Blair and several other UK government officials through letters on matters that range from bovine tuberculosis all the way to British equipment being used in Iraq.

Having immense wealth, immense reputation, and a direct line to every government official in the country is a tremen-

dous political privilege that is irresponsible to ignore.

Also, the royal family has a direct tie to the traditions involved in electoral politics. Every five years, 25 days before the general election, the Prime Minister comes to the Sovereign and humbly requests that they dissolve Parliament. The Sovereign has the right to refuse if one of three conditions are met.

One: if the current Parliament is deemed "vital, viable, and capable of doing its job." Two: if an election would be "detrimental to the national economy." And three: if the Sovereign can "rely on finding another prime minister who could govern for a reasonable period with a working majority in the House of Commons."

This is essentially British electoralism bowing down to the monarchy and asking for

(Continued on next page)



(Continued from page 16)

permission to exist. This is direct political power that is largely ignored because Queen Elizabeth was so restrained in using her power during her reign.

Her restraint is something she was praised for, but if the best compliment you can give someone is that they did not use their power for much, should they even have that power to begin with?

Another rebuttal to the notion that the royal family has no “real power” is that wealth is real power. The royal family did not



do anything to earn or deserve their wealth except be related to past kings and queens.

According to National Public Radio (NPR) King Charles won't even have to pay the requisite tax rate of 40% on the inheritance he will receive following the Queen's death due to a 1993 agreement with the government.

Here, we see UK policy bending over backwards to keep the

monarchy in a position of power at all costs.

The Crown Estate itself is projected to be worth approximately \$20 billion, with *Forbes* estimating about \$28 billion total. It is a crime for any person or organization to own this much money while even one single person in their country is in poverty, and it is doubly unethical when the organization acquires that money due to an outdated concept of divine right.

Currently, over a fifth of the UK population is in poverty. If the British have any sense at all, they will demand a complete abolishment of the crown.

At the end of the day, Britain's monarchy is only accepted by the people if the monarch sits idly and passively. Queen Elizabeth's greatest accomplishment is that she did not use her power for much, if anything.

This is just a tacit admission that monarchies don't actually have a place in the modern day.

If society progresses in a favorable direction, history will remember all monarchies as failed experiments that we let run on for too long.

Photos: Wikimedia Commons



PennState
Greater Allegheny



PennState
Greater Allegheny

Save The Date

Penn State Greater Allegheny is an Apple Distinguished School!

Join The Apple Education Team, Campus Representatives and University Leadership as we celebrate this recognition!

Wednesday, November 9, 2022
11:00 a.m. - 1:15 p.m.
Student Community Center

Want to help us plan the event?
Email: marketing-psuga@psu.edu



90 SECONDS UNDER THE BLUE UMBRELLA TIMELY TOPICS FROM AROUND CAMPUS

Mariah Greene | Contributing Writer | mmg5949@psu.edu

“How would you describe your feelings and actions about this upcoming midterm election and do you think you will vote?”



Evelyn Siler, Junior, Energy Engineering

“Well I’m not too into politics..I just don’t have the time for it. I have a lot of stuff on my plate. I want to [vote] because there’s a lot at stake, especially after the Roe V. Wade case overturned. I feel like if we don’t put someone in the Senate who is pro-choice then we can lose our rights.”

Ray Santos, Senior, Psychology

“I really don’t know because I haven’t researched much, so I feel like I’m not informed enough. That really concerns me because I feel like there are more people that are like me who don’t know what’s happening right now. I do [think I will vote] now that I know about it, but before this I didn’t know [of the election]. If it happened already I knew it would’ve been too late.”



Barbara Kendig, Tutor, Gruskin Learning Center

“I’m really hoping that Shapiro wins for governor and Fetterman wins for the Senate. I feel our country is under a terrible trend of dividing people. I pray that we get away from Donald Trump and his politics, his divisiveness and his vile way of speaking about people; and now our women’s rights are being taken away. What’s next? Absolutely yes [I will vote]. My motive is to ensure democracy in America. People have to get out and vote.”

Debra Kidd, Staff, Student Community Center

“I’m so tired of all the advertisements slamming both parties and it’s hard to believe who’s saying what is right. I did [vote] today. I wanted to make sure I voted for the person I wanted to get in.”



Aayushi Gandhi, Junior, Information Sciences and Technology

“As female, I know what things are going to be on the ballot this time, especially with the abortion thing. I do think that people should go and vote no matter what they believe in. I personally cannot vote because I’m an international student. It’s very difficult seeing decisions getting made especially for people that have been in the U.S. but can’t go and vote. If you don’t want to go vote, think of every one else who can’t vote. Please just go out and vote.”

Amy Race, Staff, Student Community Center

“A lot of candidates are one to this way and one to that way and there is a lot of confusion going on. With all the campaign stuff that’s going on I think it just confuses people.”



SPORTS & ATHLETICS



Diontae Johnson, Pittsburgh Steelers wide receiver, during a regular season game against the Tampa Bay Buccaneers (Photo: Abigail/Pittsburgh Steelers)

Steelers End Losing Streak...Bright Future Ahead?

CARLIN WHALEN

Managing Editor

cjw6426@psu.edu

After a complete blow-out against the Buffalo Bills in Week 5, the Pittsburgh Steelers came back ready to play against the Tampa Bay Buccaneers, catching a close 20 – 18 victory in a field-goal-driven game at Acrisure Stadium. Even amid all the Steelers' injuries, the defense was able to hold off Tom Brady and the Bucs.

To start off the game, Kenny Pickett, Steelers quarterback, was able to lead the team down the field to throw his first passing touchdown of his NFL career. He threw a short pass to Najee Harris, Steelers running back, for a 6-yard touchdown to

start off the game, 7 – 0.

The Bucs were able to answer back with a 30-yard field goal by their kicker, Ryan Succop, ending the first quarter, 7 - 3.

Shortly into the second quarter, Succop was able to capitalize on his second field goal of the game--a 27-yarder to put the Bucs within a one point game at 7 – 6. Chris Boswell, Steelers kicker, barely made his 55-yard field goal attempt after it hit the bottom of the goal post and bounced through the uprights. This widened their lead, 10 – 6.

Once again, Succop kicked his longest field goal of the game, 54-yards, to put his team within one point going into halftime, 10 – 9.

Coming back from the half, Steven Sims,

Steelers wide receiver, had an 89-yard kick return to put them in great scoring position. Unfortunately, it ended in a 25-yard field goal kick from Boswell to put them up, 13 – 9. The Bucs answered soon after with a 24-yard field goal to shorten the deficit once again to 13 – 12.

Unfortunately, Pickett was tackled hard to the ground and was removed from the game halfway through the third quarter. He did not return due to a possible concussion.

Mitch Trubisky stepped up and filled his quarterback shoes, having a really good fourth quarter. He was able to march down the field and throw a 6-yard touchdown pass to Chase Claypool, Steelers wide receiver, to lead 20 – 12, making it an

eight-point game.

That did not frighten Brady. He quickly led the Bucs to the Steelers Redzone and threw an 11-yard touchdown pass to Leonard Fournette, Bucs running back. In order to tie the game, Brady attempted a 2-point conversion, but was not able to complete the pass.

The Steelers were able to run out the clock and end their four-game losing streak.

Steelers head coach, Mike Tomlin, mentioned in a postgame interview, "We are appreciative of today, but we still understand exactly where we are... We aren't running away from it, we will continue to run to it and get better."

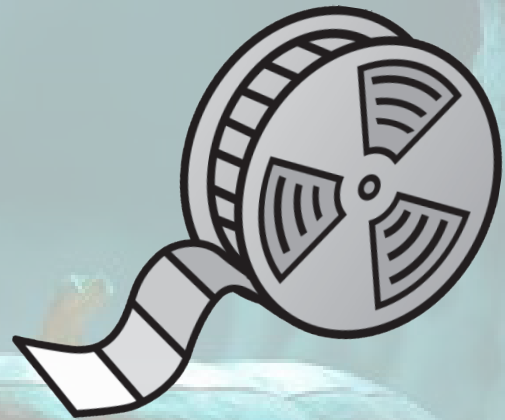
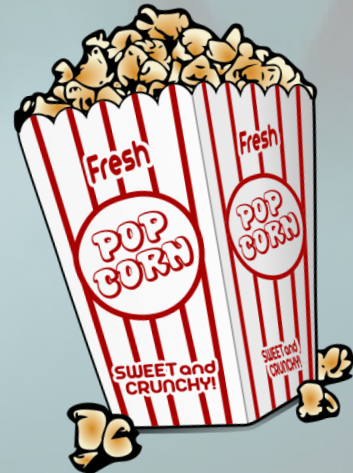
HALLOWEEN

Attention movie gurus!

It's officially spooky season and the Penn State Digital Movie Database--courtesy of the Kelly Library--has a big list of movies perfect for October. "Check them out" digitally, with your Penn State ID, by logging on to Swank: <https://bit.ly/psulmovies>

Horror:

A Nightmare on Elm Street
A Quiet Place
American Psycho
Bram Stoker's Dracula
Bride of Frankenstein
Candyman
Carrie
Dr. Jekyll & Mr. Hyde
Dracula
Frankenstein
Friday the 13th
Hellboy
Hereditary
Let the Right One In
Mother!
Night of the Living Dead
Poltergeist
Psycho
Pulse
Red Planet
Scream
Split
The Amityville Horror
The Blair Witch Project
The Box
The Cabin in the Woods
The Exorcist
The Host
The Last Days on Mars
The Ring
The Witch
Us
White God



Thrillers:

Arrival
Bridge of Spies
Cloverfield
Contagion
Deepwater Horizon
Fatal Attraction
In the Mouth of Madness
Jinn
Pan's Labyrinth
Shutter Island
The Babadook
V for Vendetta
Vertigo

Sci-Fi:

Annihilation
Chernobyl
Dune
District 9
Ghost Story
Inception
Melancholia
The Matrix series
Zombieland