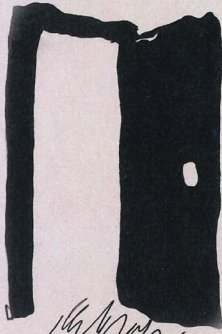


I WENT TO VISIT MY GRANDPARENTS



HI NANA AND PAPA  
HOW ARE YOU DOING?



OH WE ARE DOING FINE

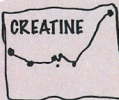


WHAT  
HAPPENED  
TO  
YOUR  
LEGS??!!?



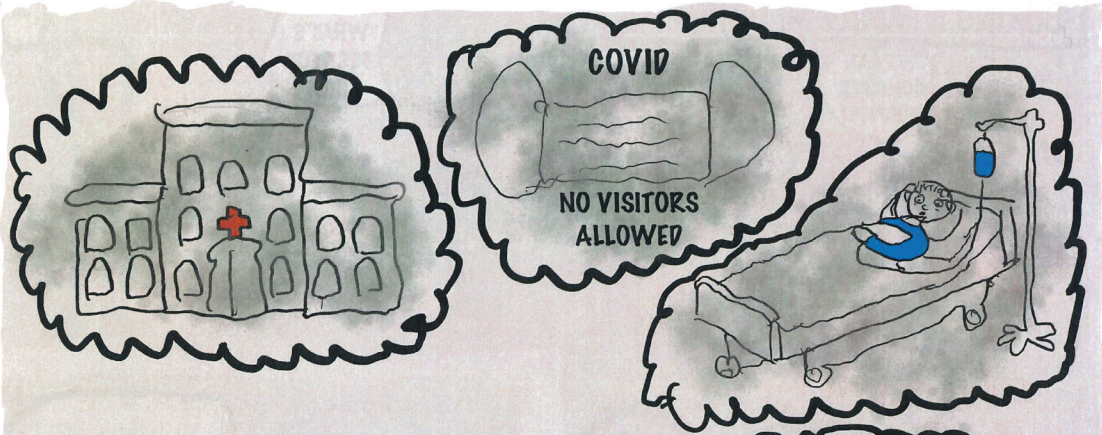
DOCTOR IT HAPPENED  
AGAIN!

HAVE HIM  
COME TO  
THE OFFICE  
ASAP



NOT ONLY IS YOUR HEART FAILING  
AND CAUSING FLUID TO COLLECT  
IN YOUR LEGS  
BUT ALSO  
YOUR KIDNEYS ARE FAILING  
...

YOU NEED TO GO TO THE HOSPITAL



## DURING A FAMILY MEETING



## WHAT IS HOSPICE?




PURPOSE: TO PROVIDE CARE THAT FOCUS ON QUALITY OF LIFE AND COMFORT RATHER THAN A CURE



TREATMENTS FOCUS ON: SYMPTOMS (DYSPNEA PAIN, MOOD, MENTAL STATUS, FATIGUE) CARE USUALLY DONE AT HOME



NURSE VISITS ABOUT 1X PER WEEK MUCH OF THE CARE IS ACTUALLY DONE BY THE FAMILY

 Medicare

EXPENSES FOR HOSPICE IS COVERED BY MEDICARE



SPIRITUAL AND PSYCHOSOCIAL SERVICES PROVIDED



BEREAVEMENT COUNSELING PROVIDED TO FAMILY

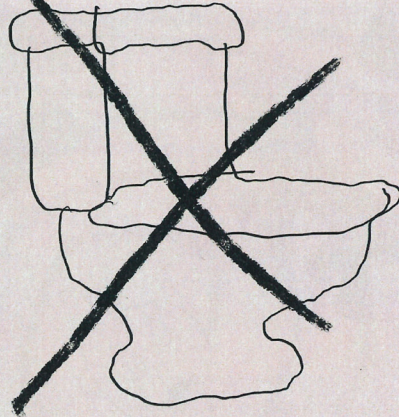
\*National Hospice and Palliative Care Organization (NHPCO) Facts and Figures: Hospice Care in America. Alexandria, VA, Released 9/2017

AND SO PAPA STARTED HOSPICE

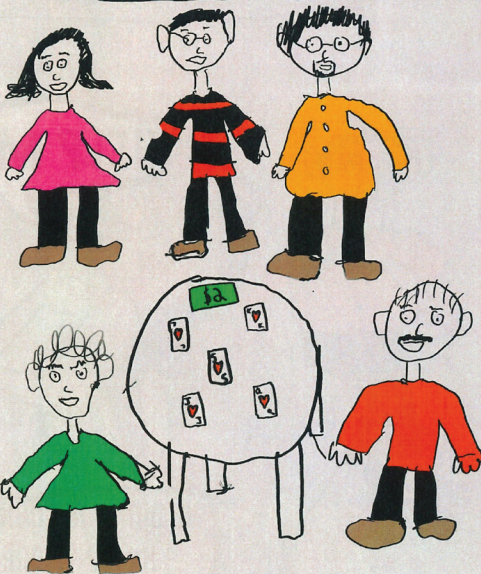
I CAN  
BREATHE!



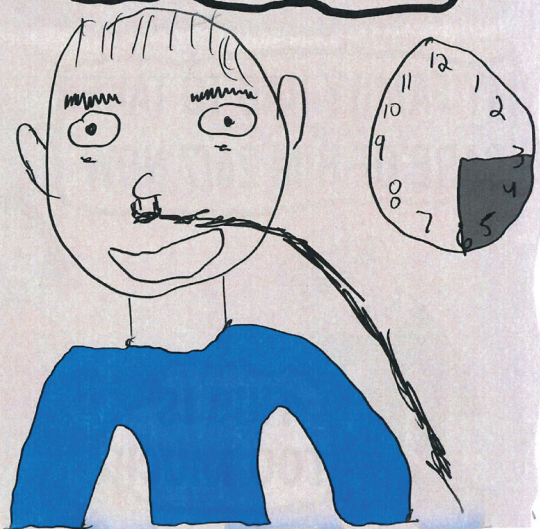
I DO NOT HAVE TO  
GO TO THE BATHROOM  
EVERY HOUR

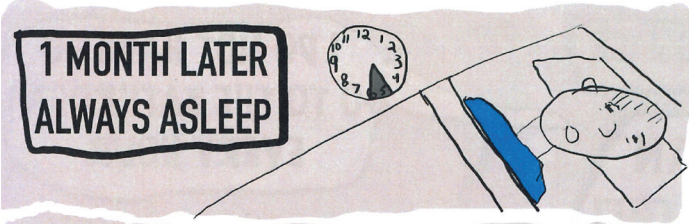


I GET TO SPEND TIME  
WITH MY FAMILY

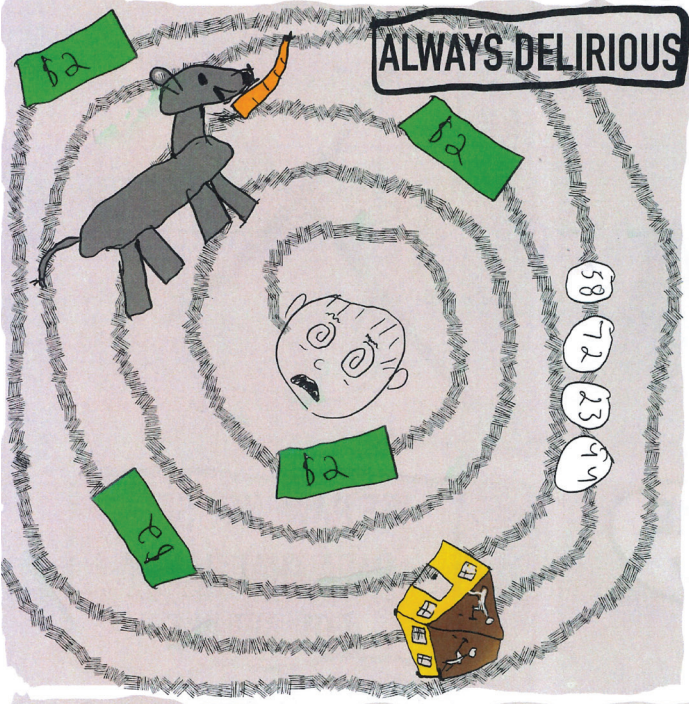


WE HAVE NOT SEEN  
PAPA THAT HAPPY  
FOR AWHILE

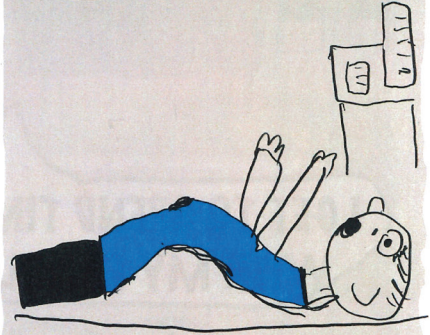




**ALWAYS OUT OF BREATH**



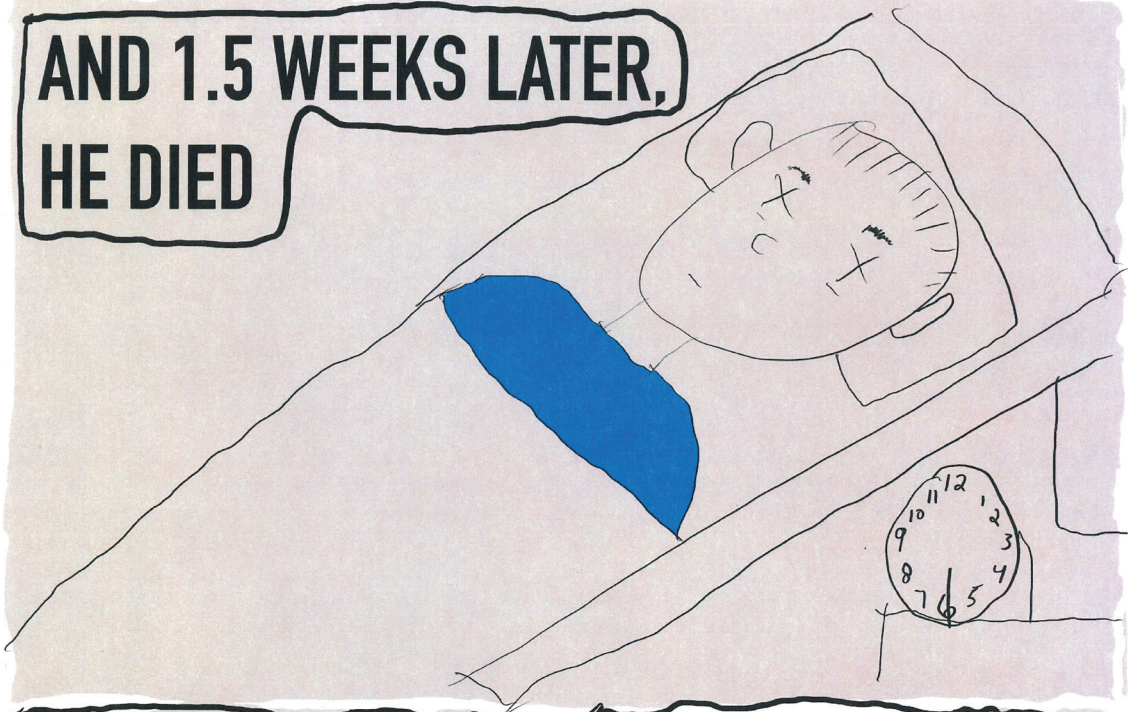
**ALWAYS IN PAIN**



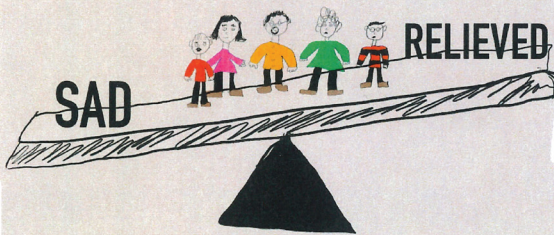
**MY FAMILY HAD TO TAKE  
CARE OF HIM 24/7 NOW**



**AND 1.5 WEEKS LATER,  
HE DIED**



**MY FAMILY WAS BOTH SAD  
AND RELIEVED**



### **AFTERWORD**

DEAR READER,

PAPA WAS A GREAT MAN.

HIS PROLONGED DEATH WAS HARD  
ON HIM AND MY FAMILY.

I AM SURE THIS STORY IS NOT  
UNIQUE TO OUR FAMILY.

THE CLOCK TICKS DOWN FOR ALL OF US.

PAPA SAID TO ME "VALUE TIME  
WITH YOUR LOVED ONES."

BEST,  
MARTY JOHNSON (MS4)

