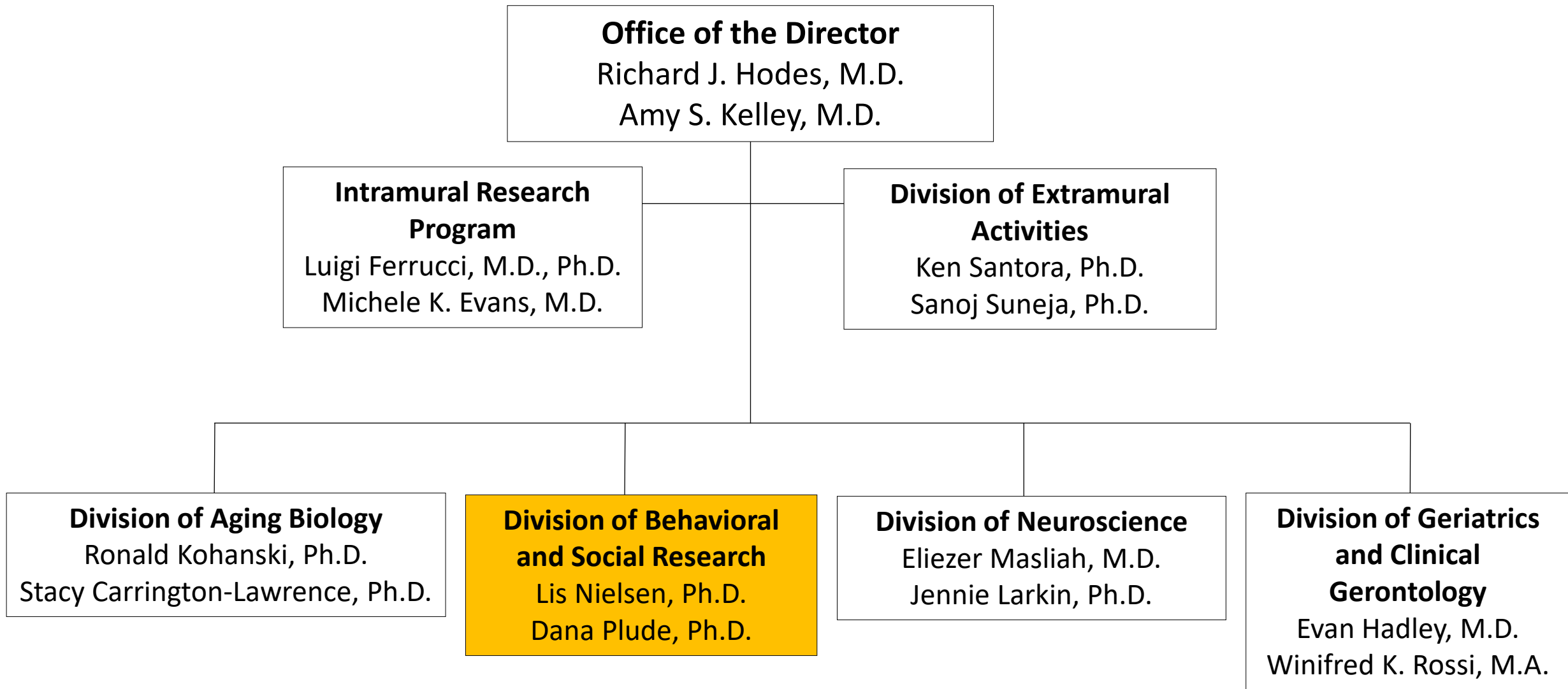


News from the National Institute on Aging and Division of Behavioral and Social Research

Emerald T. Nguyen, NIA Program Official
INRPHA Annual Meeting
August 10, 2023

National Institute on Aging Organizational Structure



Division of Behavioral and Social Research

Social, psychological, economic, and behavioral research on the processes of aging at the individual and population level

Cross-cutting themes:

- Understanding and Addressing Health Disparities
- Life Course Perspective on Aging Processes
- Biobehavioral and Biosocial Integration

[Data Resources](#)

[Research Networks](#)

[Centers: RCMAR, Roybal, Demography & Economics](#)



Current Funding Opportunities and Approved Concepts

Exploratory Grants for Climate Change and Health Research Center Development (P20 Clinical Trial Optional)

[RFA-ES-23-007](#)

Due Date: November 07, 2023

Notice of Special Interest (NOSI): Climate Change and Health

[NOT-ES-22-006](#)

Expiration Date: May 08, 2025

AD/ADRD Exposome Coordinating Center

[RFA-AG-24-011](#)

Due Date: October 27, 2023

Notice of Special Interest: Health Disparities and Alzheimer's Disease

[NOT-AG-21-033](#)

Expiration Date: November 13, 2024

Leveraging Social Networks to Promote Widespread Individual Behavior Change

[RFA-AG-24-025 \(R01\)](#)

[RFA-AG-24-026 \(R34\)](#)

Due Date: November 03, 2023

Concepts:

[Dementia Care Coordination Research Center](#)

NIA's Interest in Supporting Research on Climate Impacts on Older Adult Health

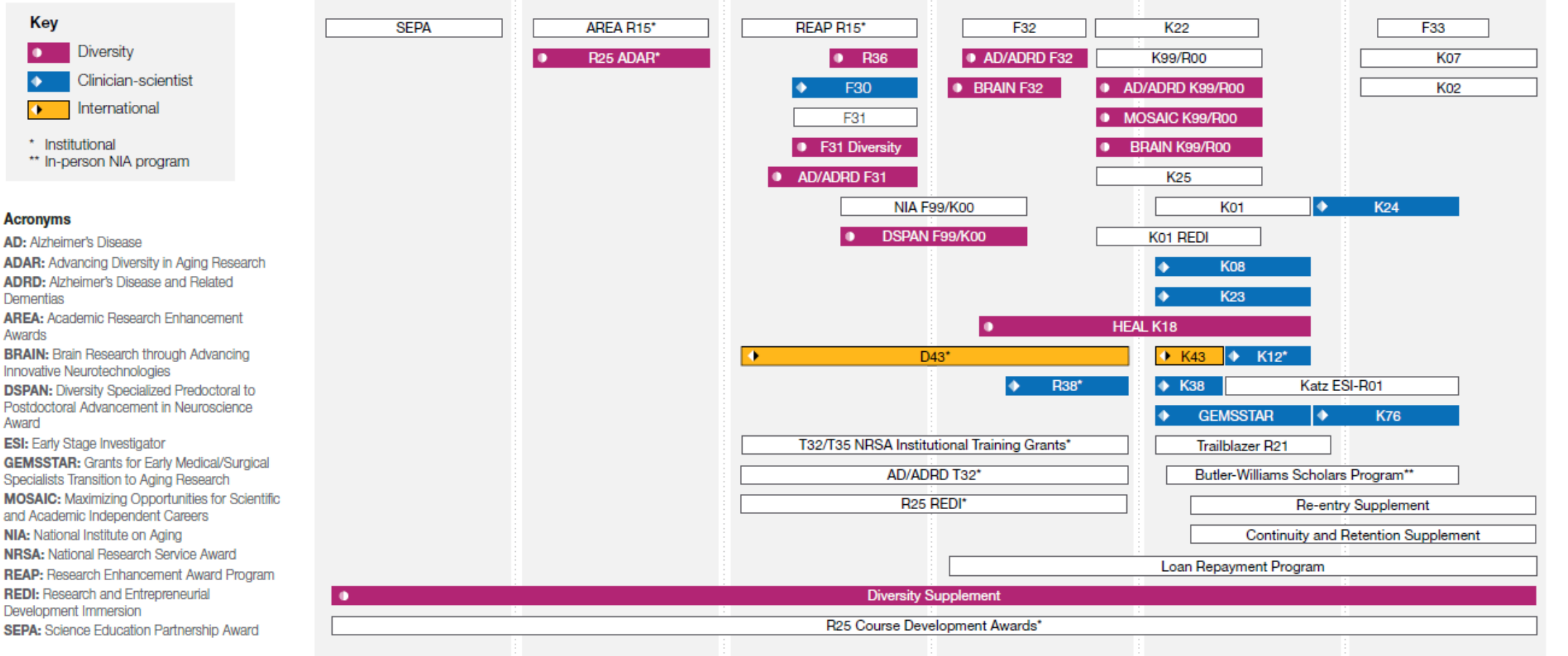
- The impacts of climate change and extreme weather on **health and/or well-being, pace of aging, and aging-related physiological processes** (e.g., immune function, circadian rhythm, etc.) across the life span.
- Midlife and older adult health promotion, adaptation, and resilience** in the face of climate change and in the aftermath of extreme weather events.
- Effects of extreme weather events or changing environmental hazards on **older adults from diverse racial, ethnic, sexual and gender minority, physical disability, and socially disadvantaged backgrounds** effectively managing health conditions (e.g., diabetes, cholesterol, weight management, various types of arthritis, etc.) and any untold financial burden that may be exacerbated by changes in the environment.
- The impact of age-related change in **affective, social, and cognitive factors on individual responses** to climate change, and on how individuals initiate and maintain the behavior changes needed for preparedness and adaptation to extreme weather events.
- Cross-national analyses of nationally representative data**, particularly analyses that include low- and middle-income countries, including data from the [US Health and Retirement Study \(HRS\)](#), [International Family of HRS studies](#), and the [Harmonized Cognitive Assessment Protocol \(HCAP\)](#) available in the HRS and several international studies to measure cognitive outcomes.
- Policy, economic, and systems analysis research** towards system changes for preparedness or response to climate change and extreme weather events.

NIH Climate and Health Scholars Program

- Scholars are currently based at a university or with a research-based organization.
- Placement within an NIH Institute or Center is for approximately eight months.
- Scholars work with staff across NIH to share knowledge and help build capacity for conducting climate-related and health research.



NIA Training and Career Development Landscape



Funding at NIA: General Pay line v. AD/ADRD*

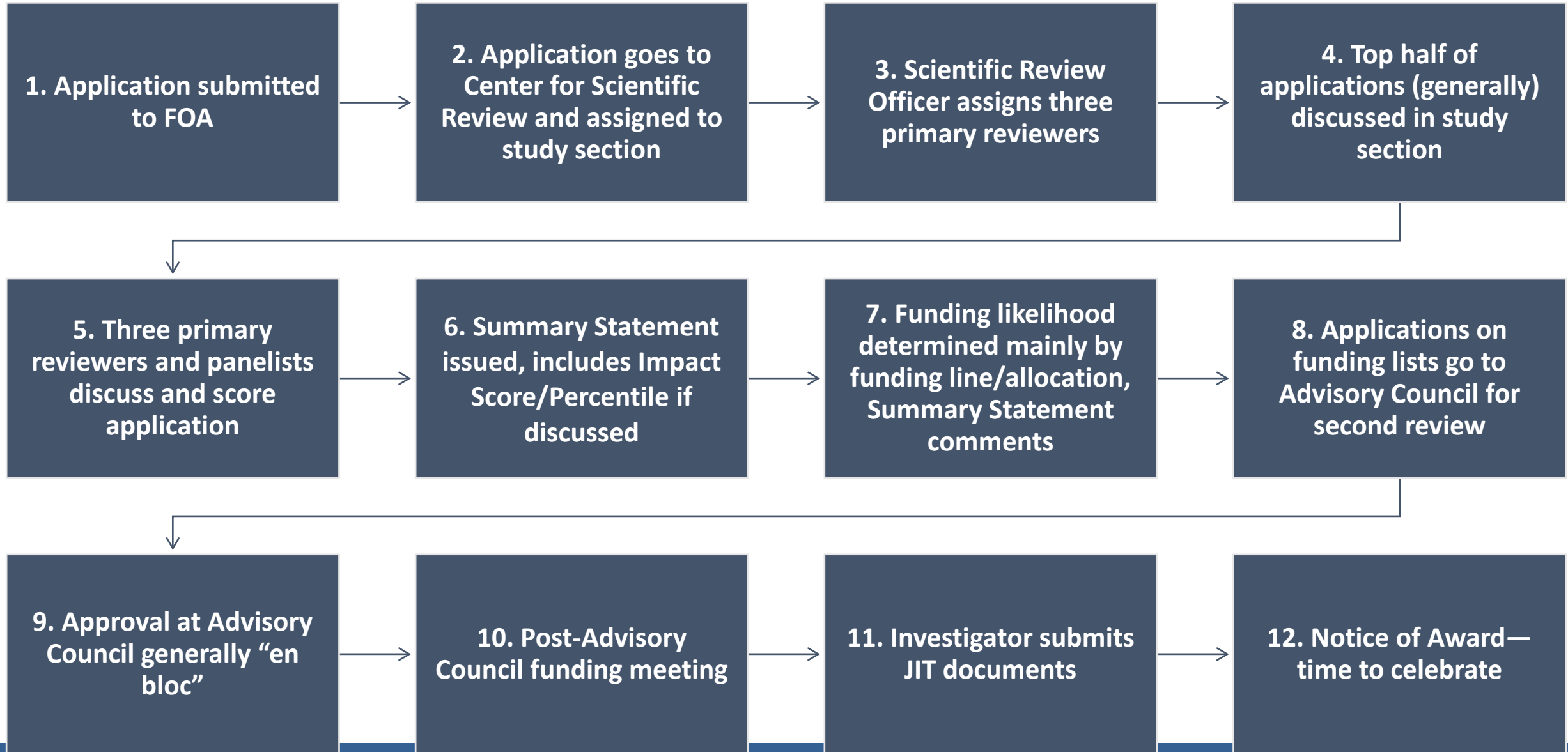
*AD/ADRD: Alzheimer's Disease and Alzheimer's Disease Related Dementias

Applications	General pay line, < \$500k	General pay line, ≥ \$500k	AD/ADRD pay line
All (except below)	15%	12%	25%
New Investigator R01s	18%	15%	28%
Early Stage Investigator R01s	20%	17%	30%

- Funding advantage for work relevant to AD/ADRD.
- For R01s only: advantage for PIs never held R01 (NI), PIs within 10 years of terminal degree without R01 (ESI).

<https://www.nia.nih.gov/research/grants-funding/nia-funding-line-policy-fy-2023>

NIH Application and Funding Process



Helpful Links

- NIA BSR: <https://www.nia.nih.gov/research/dbsr>
- NIA Training and Career Development Portal: <https://www.nia.nih.gov/research/training>
- NIA FAQs: <https://www.nia.nih.gov/research/research-and-funding-frequently-asked-questions>
- NIA BSR: <https://www.nia.nih.gov/research/dbsr>
- NIAID Tips on Preparing Application and Sample Applications: <https://www.niaid.nih.gov/grants-contracts/prepare-your-application>
- NIH Guide: <https://grants.nih.gov/funding/searchguide/index.html#/>
- NIH RePORTER—what has been funded: <https://projectreporter.nih.gov/reporter.cfm>
- “Open Mike” Blog—info for applying, NIH policies: <https://nexus.od.nih.gov/all/category/blog/>
- NIH/CSR Assisted Referral Tool (ART)—study section matchmaker: <https://public.csr.nih.gov/ForApplicants/ArtHome>

Stay Informed and Connected



Sign up to receive updates and resources delivered to your inbox.

<https://nia.nih.gov/sign-up>



Subscribe to our blog and stay up to date on the latest NIA news:

<https://www.nia.nih.gov/research/blog>



Search all active NIA funding opportunities:

<https://www.nia.nih.gov/research/funding>



Review the latest approved concepts:

<https://www.nia.nih.gov/approved-concepts>



Tweet NIA on Twitter:

<https://twitter.com/NIHAging>



Follow NIA on LinkedIn:

<https://www.linkedin.com/company/national-institute-on-aging/>



Like NIA on Facebook:

<https://www.facebook.com/NIHAging/>



Subscribe to NIA on YouTube:

<https://www.youtube.com/user/NatInstituteOnAging>

Thank you