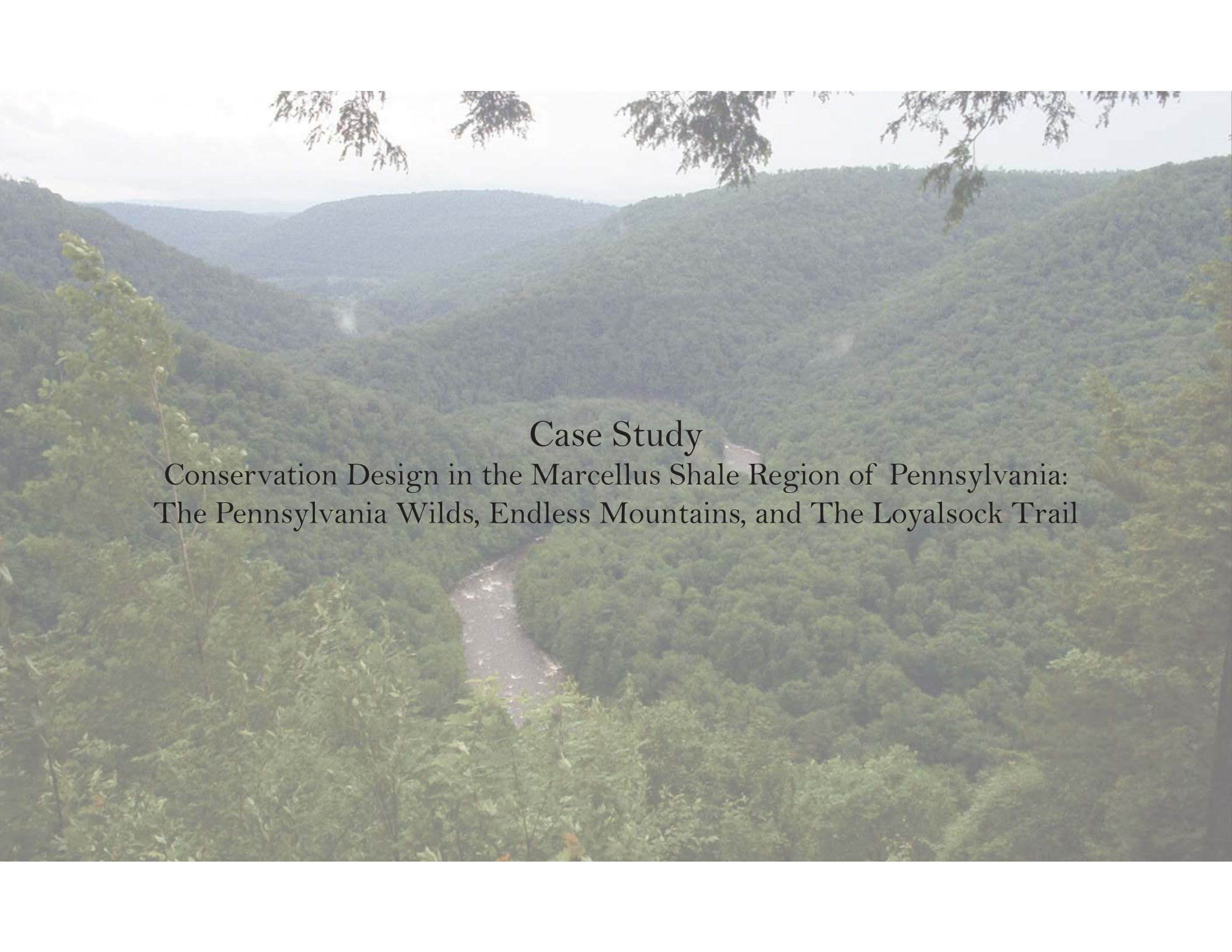


# Utilizing Crowdsourced Georeferenced Photography for Scenic Conservation

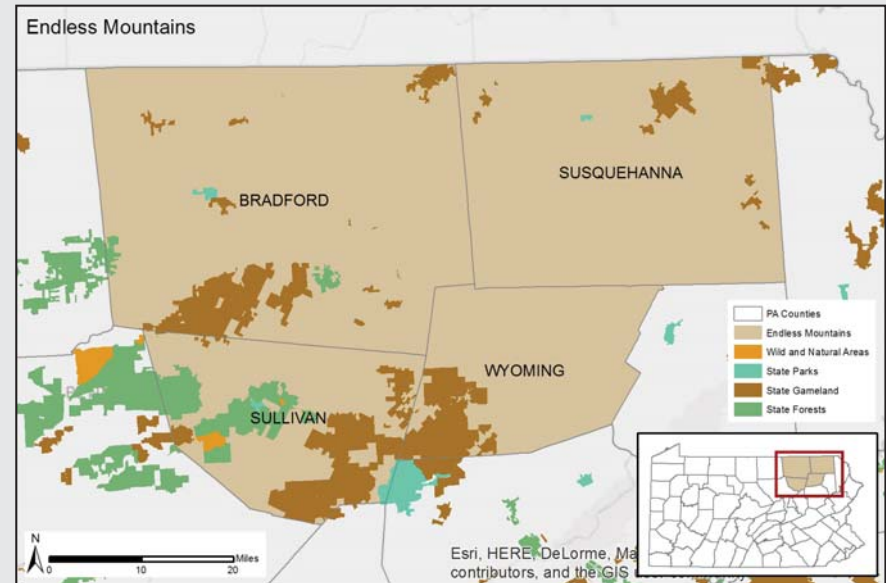
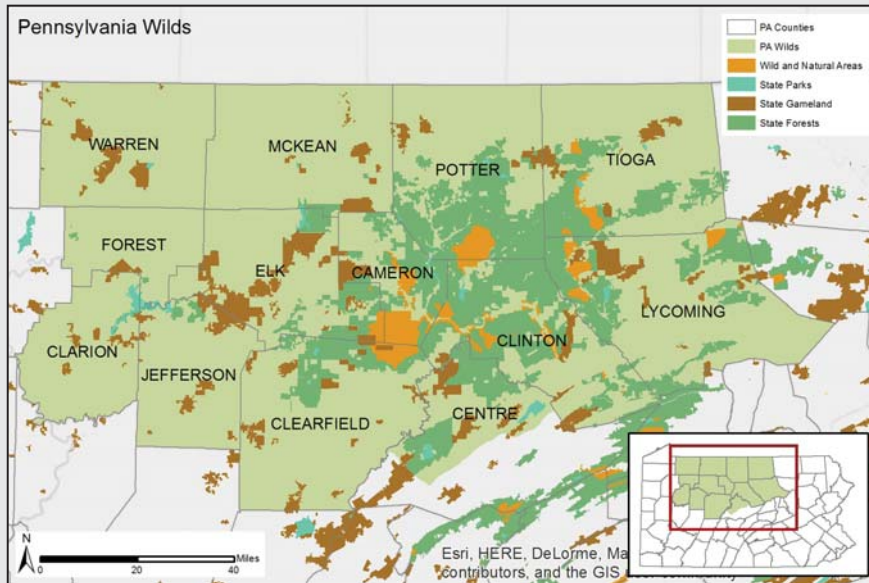
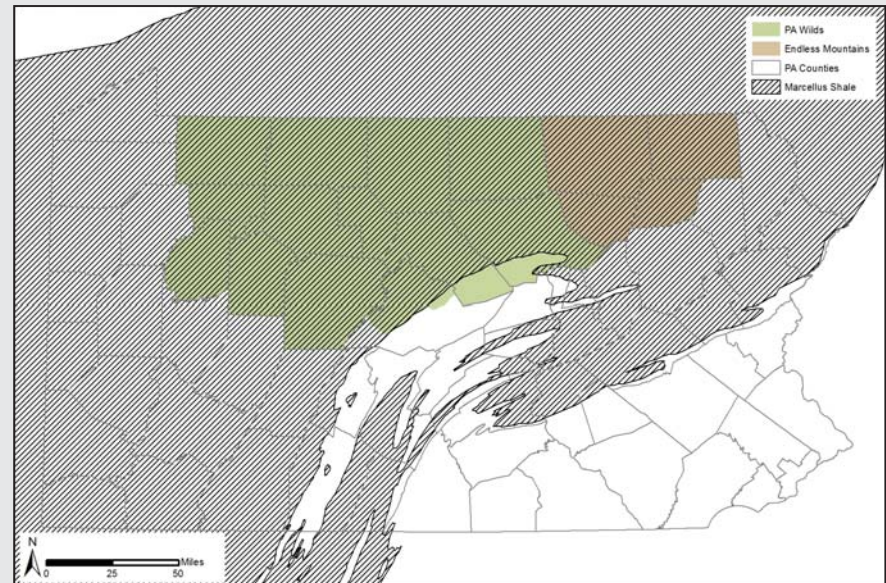
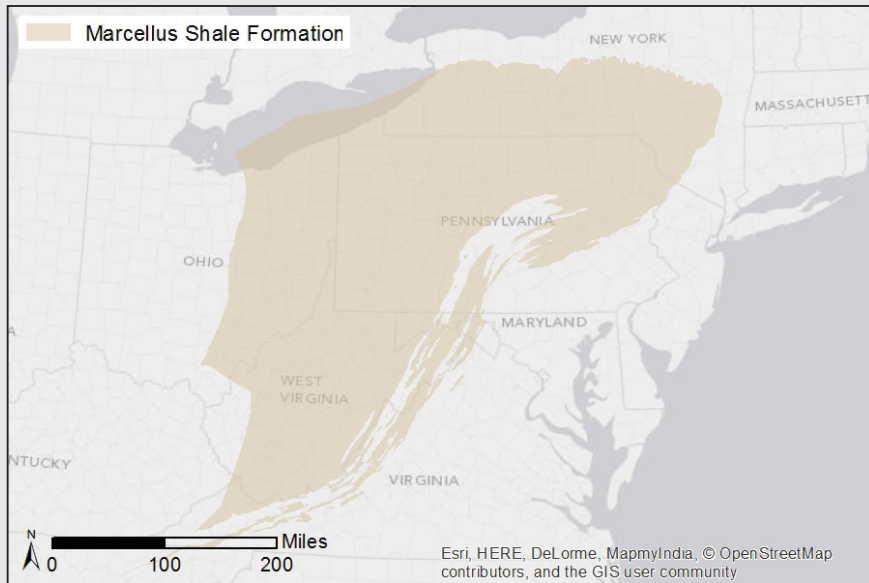
Lacey Goldberg ~ The Hamer Center for Community Design  
The Stuckeman School of Architecture and Landscape Architecture  
Pennsylvania State University



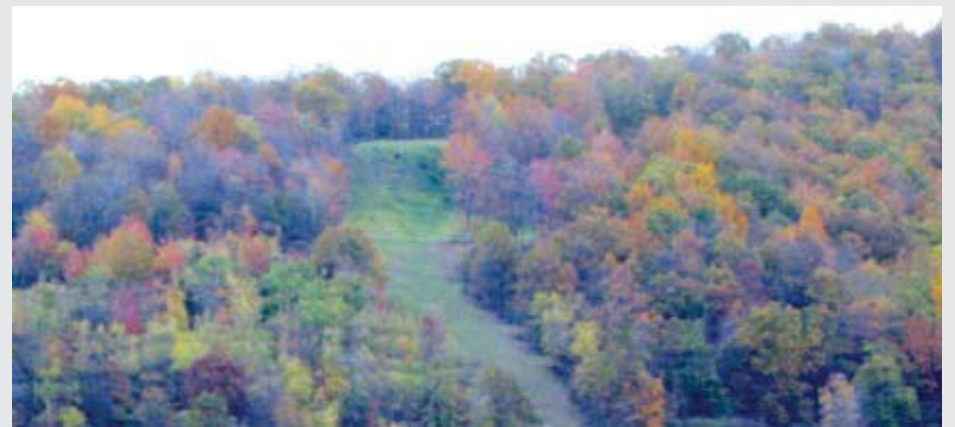
A scenic view of a river flowing through a dense forest in a valley, with rolling hills in the background. The river is the central focus, winding through the lush green landscape. The hills are covered in thick forest, and the sky is overcast. The text is overlaid on the center of the image.

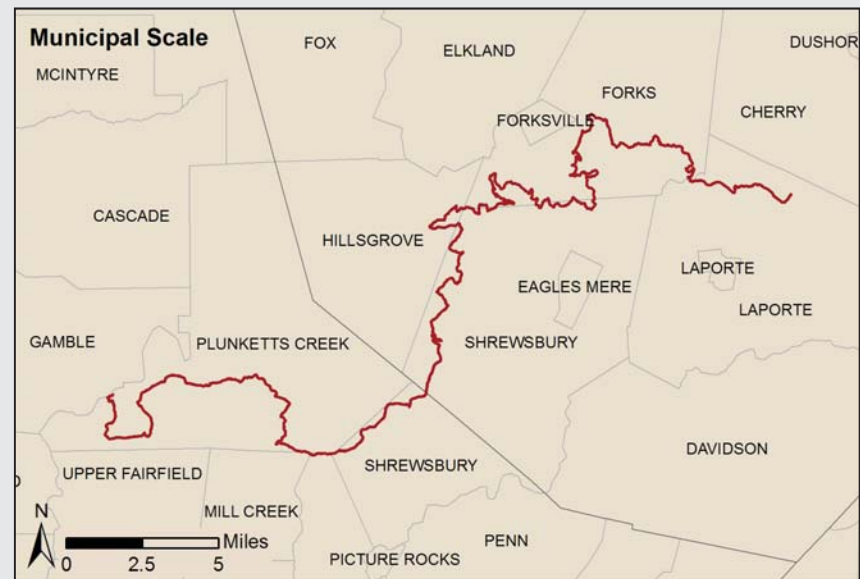
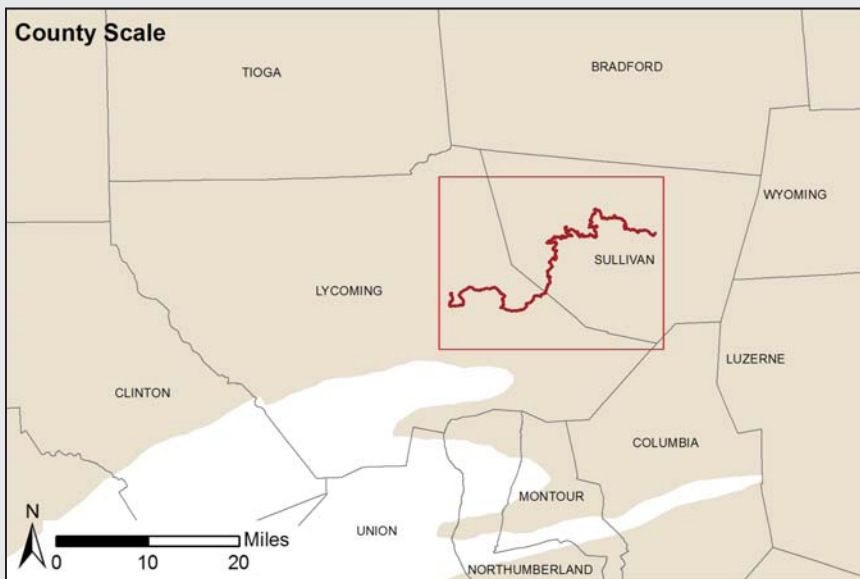
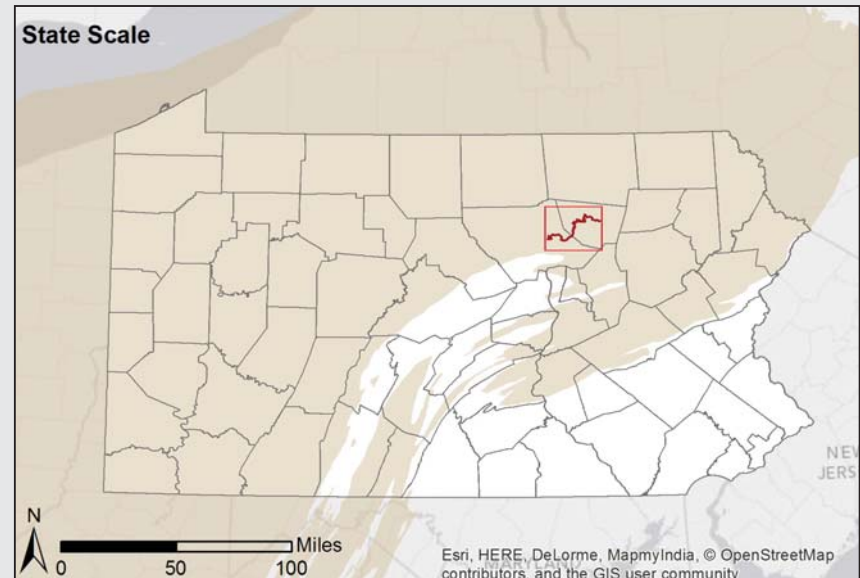
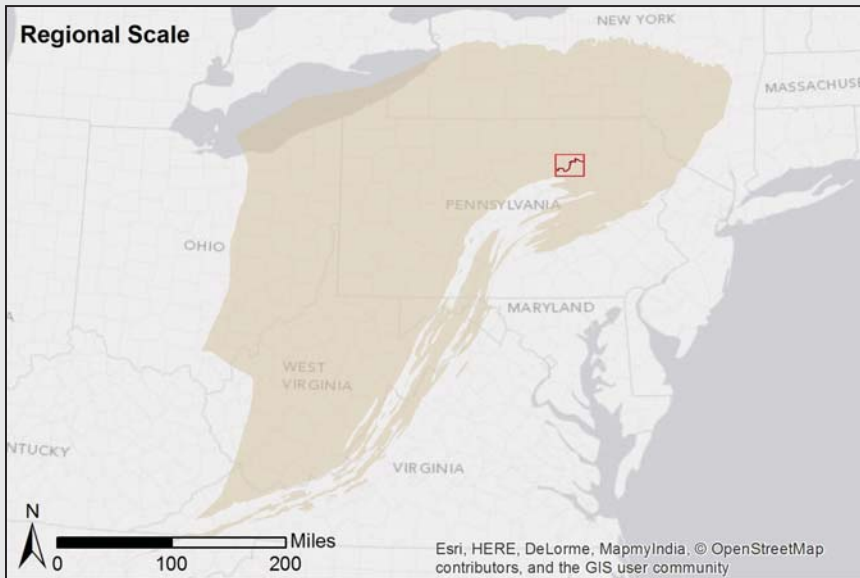
**Case Study**  
Conservation Design in the Marcellus Shale Region of Pennsylvania:  
The Pennsylvania Wilds, Endless Mountains, and The Loyalsock Trail









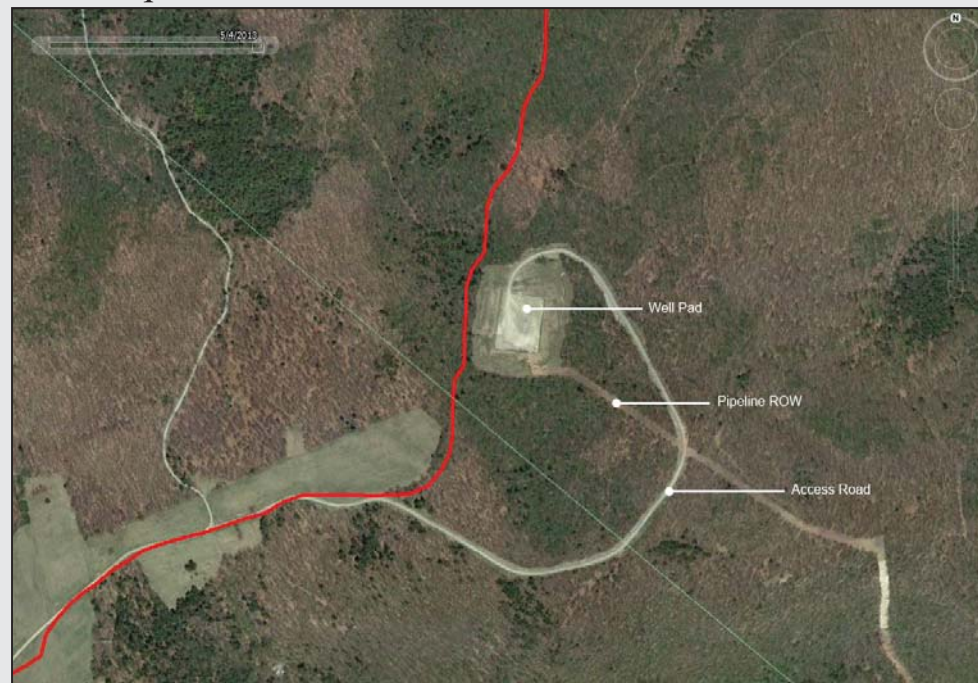


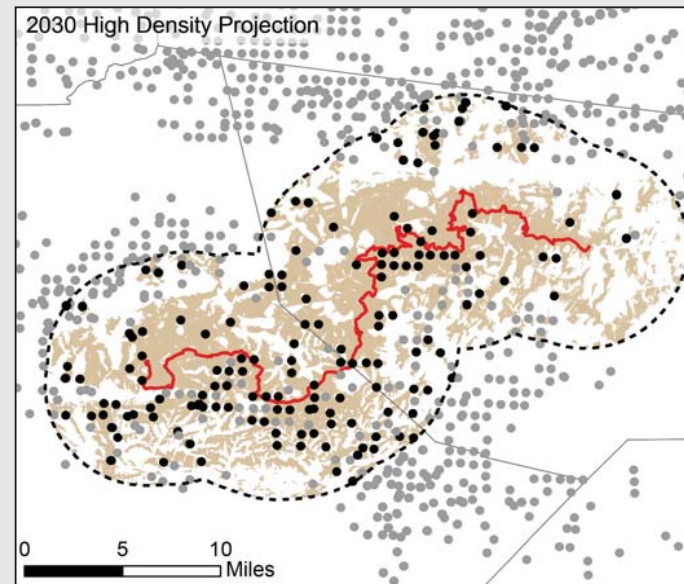
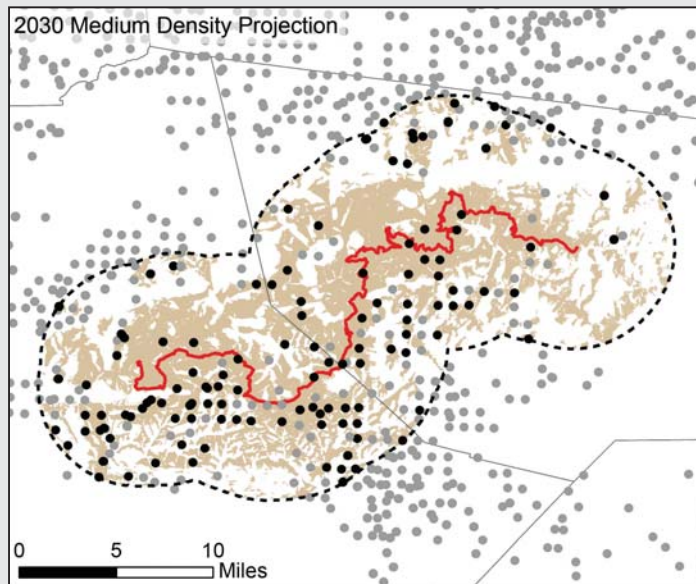
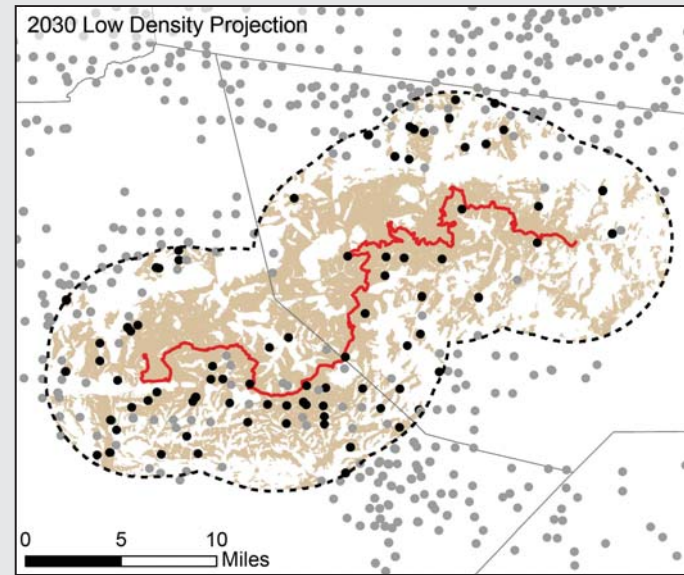
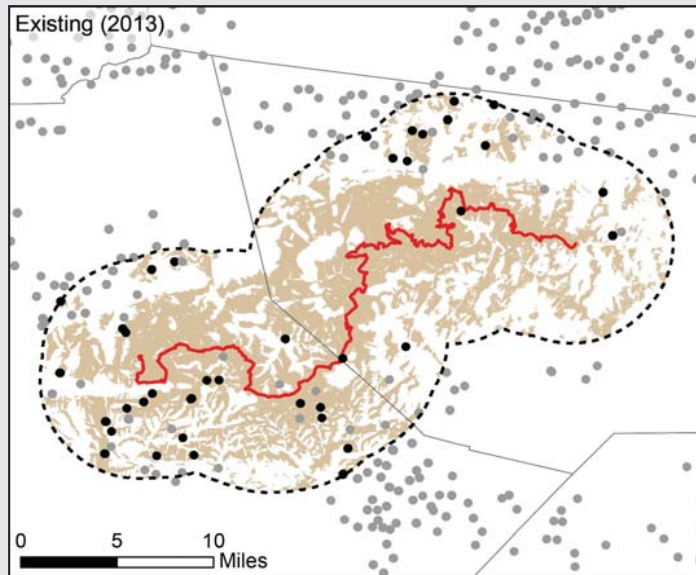


May 2010

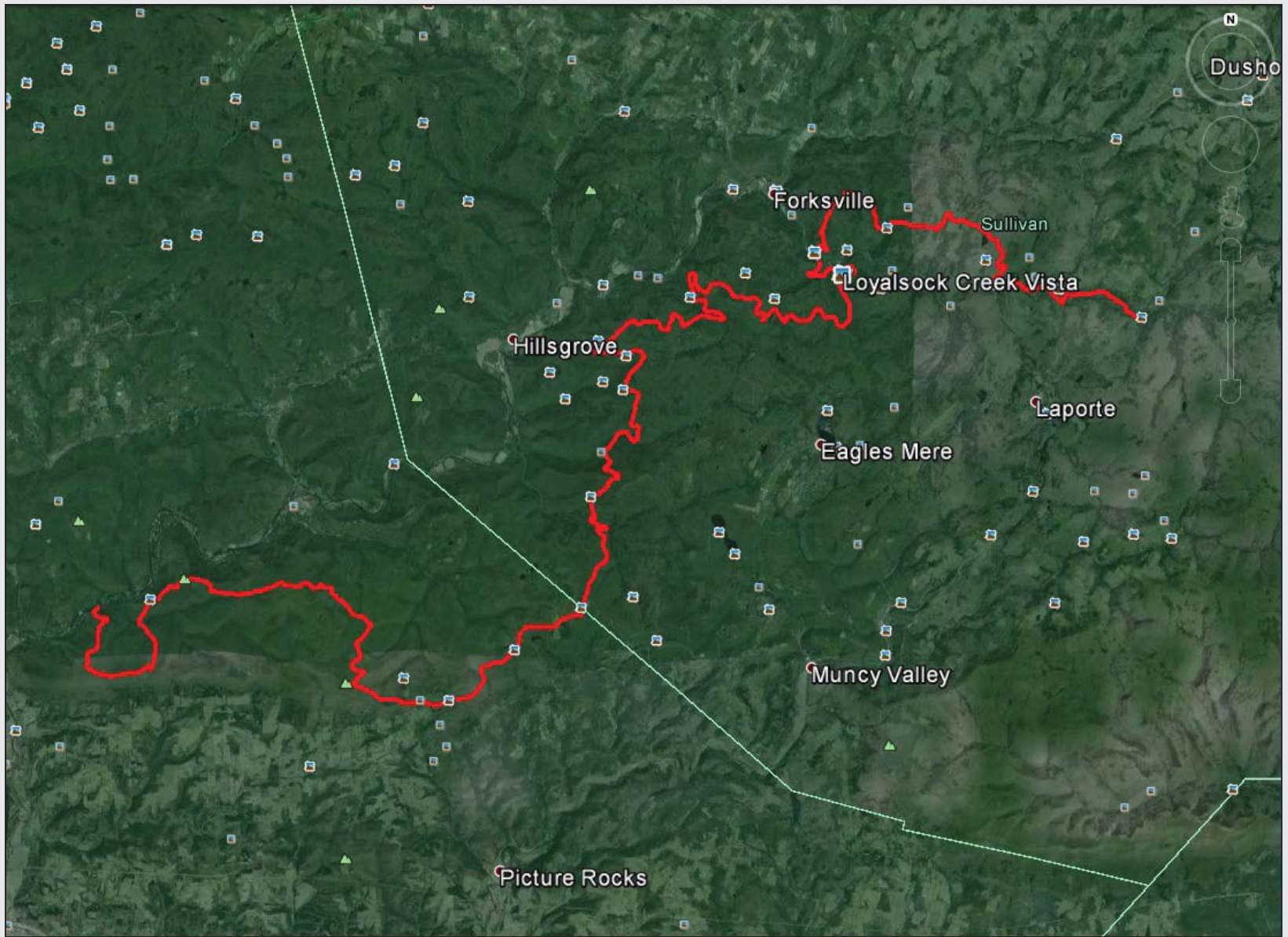


Sept 2013

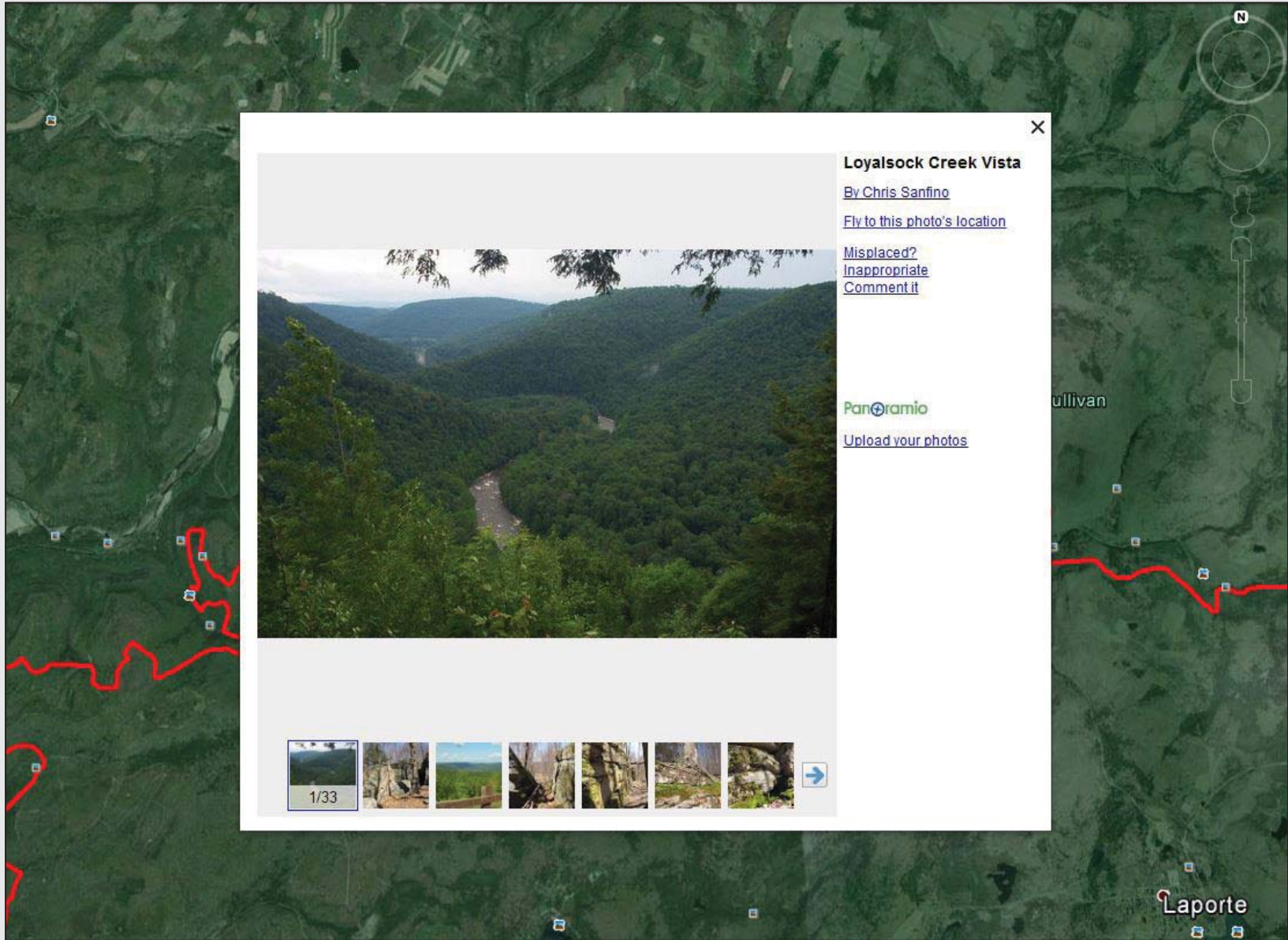












X

**Loyalsock Creek Vista**

By [Chris Sanfino](#)

[Fly to this photo's location](#)

[Misplaced?](#)

[Inappropriate](#)

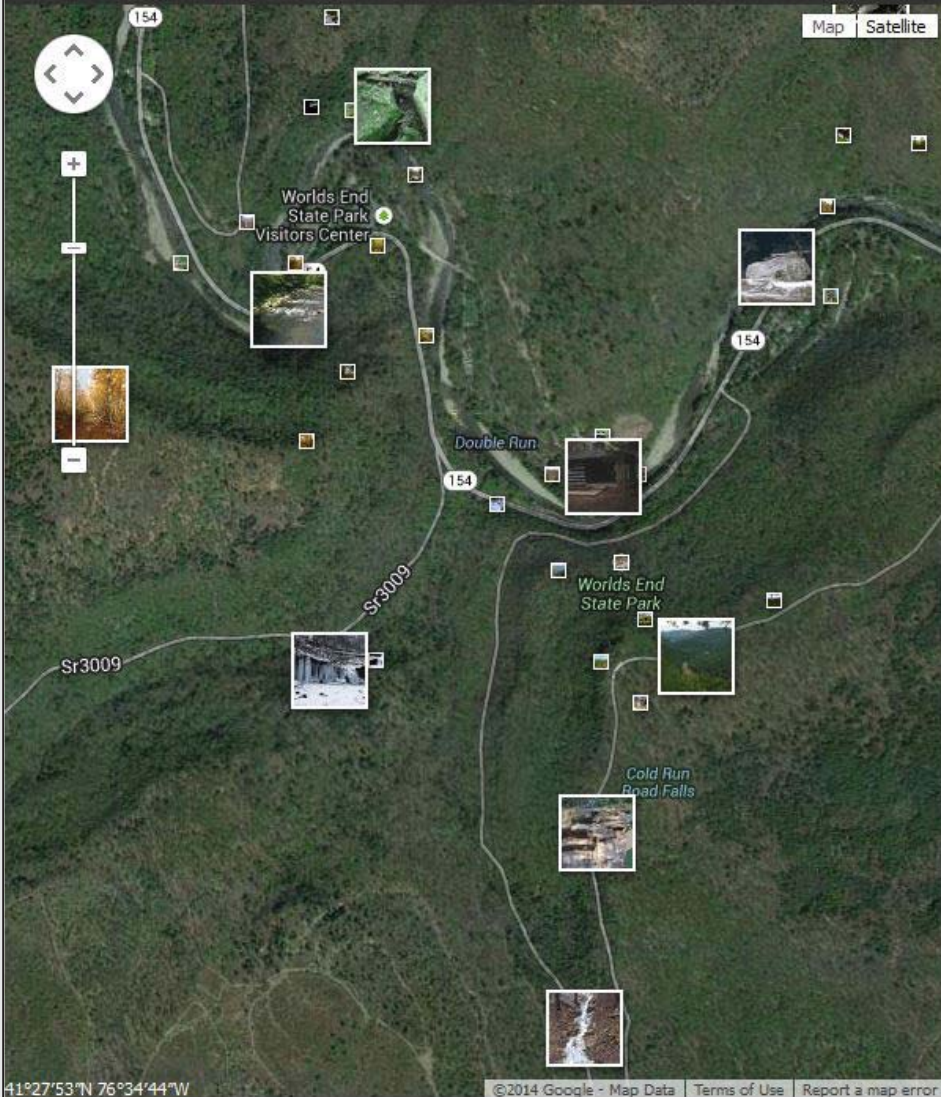
[Comment it](#)

**Panoramio**

[Upload your photos](#)

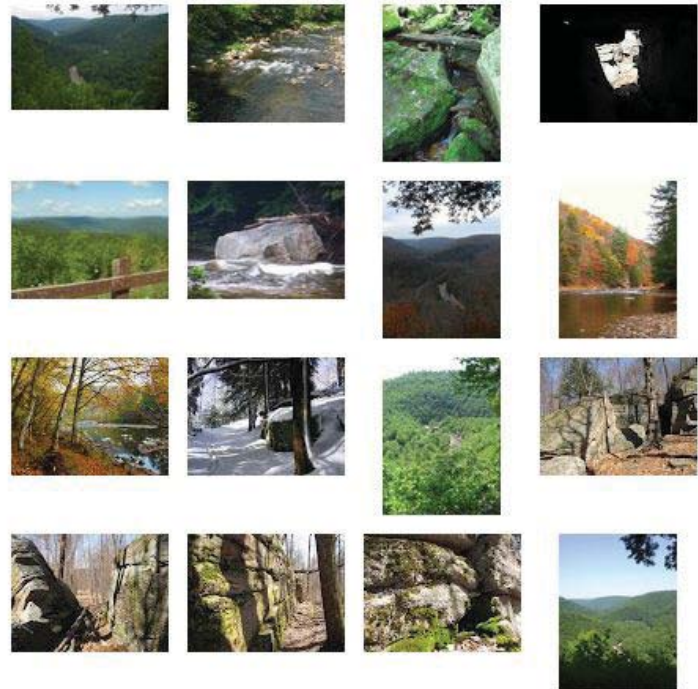


Laporte



Popular Recent Places Indoor

Also show photos not selected for Google Earth



All photos in Google Earth

« Previous Next »





Loyalsock Creek Vista

14810 views 1 favorite



Selected for Google Maps and Google Earth

### Comments (2)



**northwestjunkie** on June 29, 2008  
This is truly a great shot. The tree texture reminds me of a blanket.  
[Translate](#)



**Chris Sanfino** on June 29, 2008  
Thanks. PA has got some crown jewels if you dig deep enough. It was a rainy day in this shot, and sometimes that can make for the best colors. Chris  
[Translate](#)

[Sign up](#) to comment. [Sign in](#) if you already did it.



**Chris Sanfino**  
23090 photos



More photos by **Chris Sanfino**

World • United States • Pennsylvania  
Forksville



Map Data | 500 m | Terms of Use



Photo taken in Worlds End State Park, 82 Cabin Bridge Rd, Forksville, PA 18616, USA

41° 27' 45.61" N 76° 34' 22.15" W  
[Misplaced? Suggest new location](#)

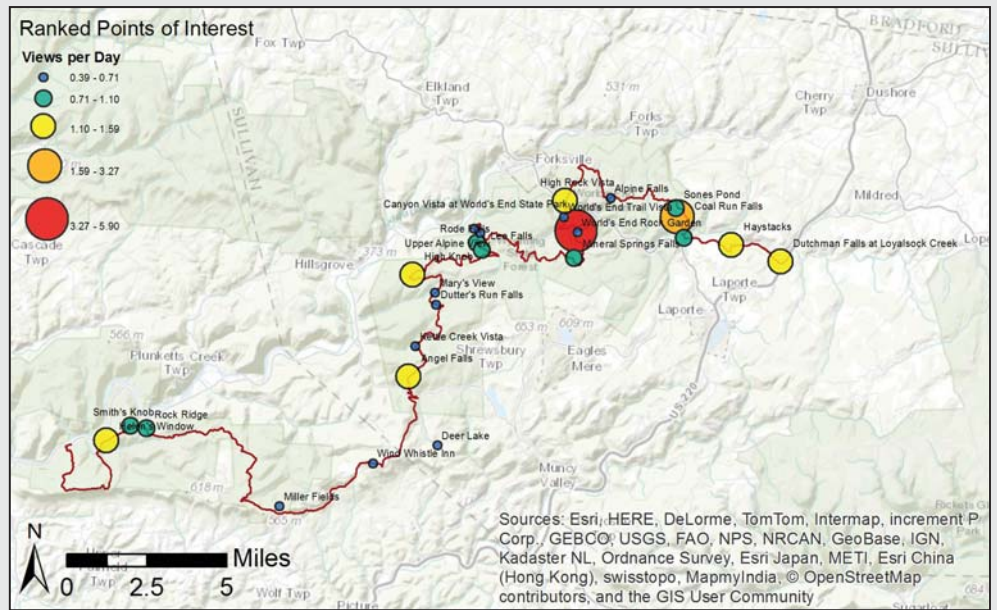
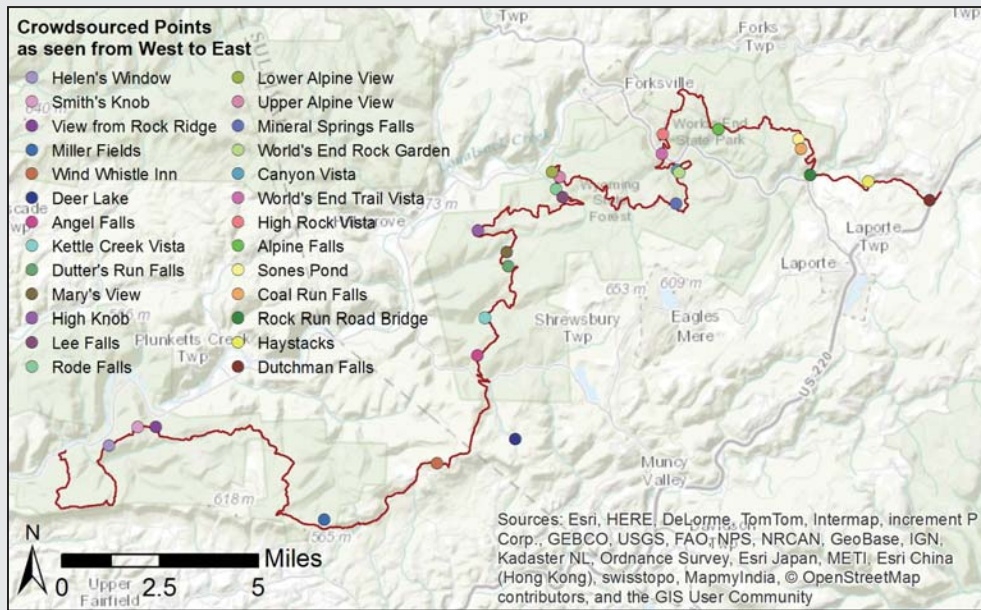
### Tags

• best • Western Pennsylvania

### Photo details

Uploaded on July 17, 2007

© All Rights Reserved  
by Chris Sanfino



Canyon Vista



Coal Run Falls



High Knob

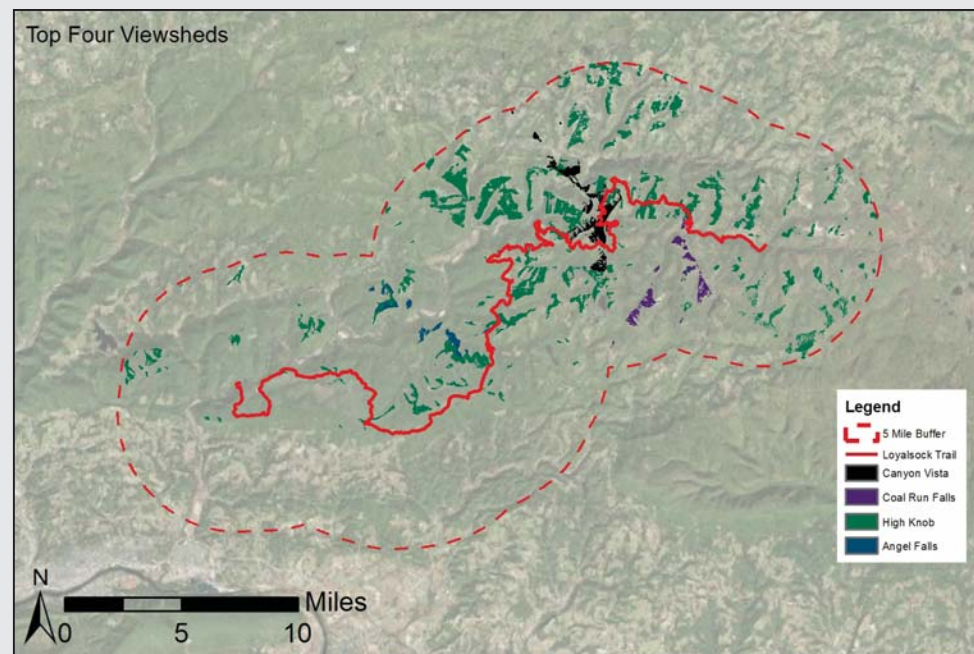
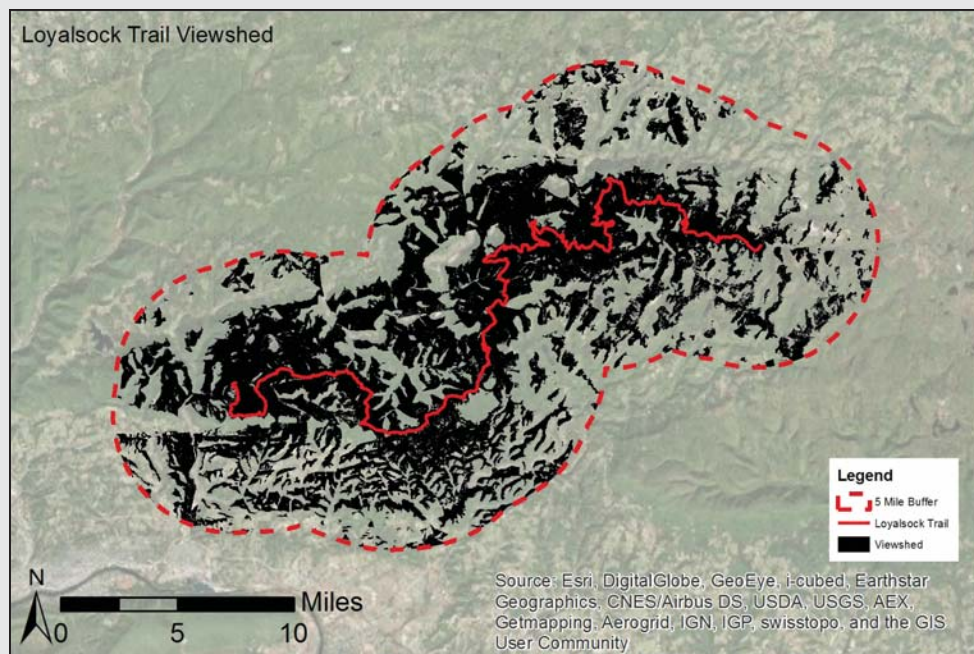


Angel Falls

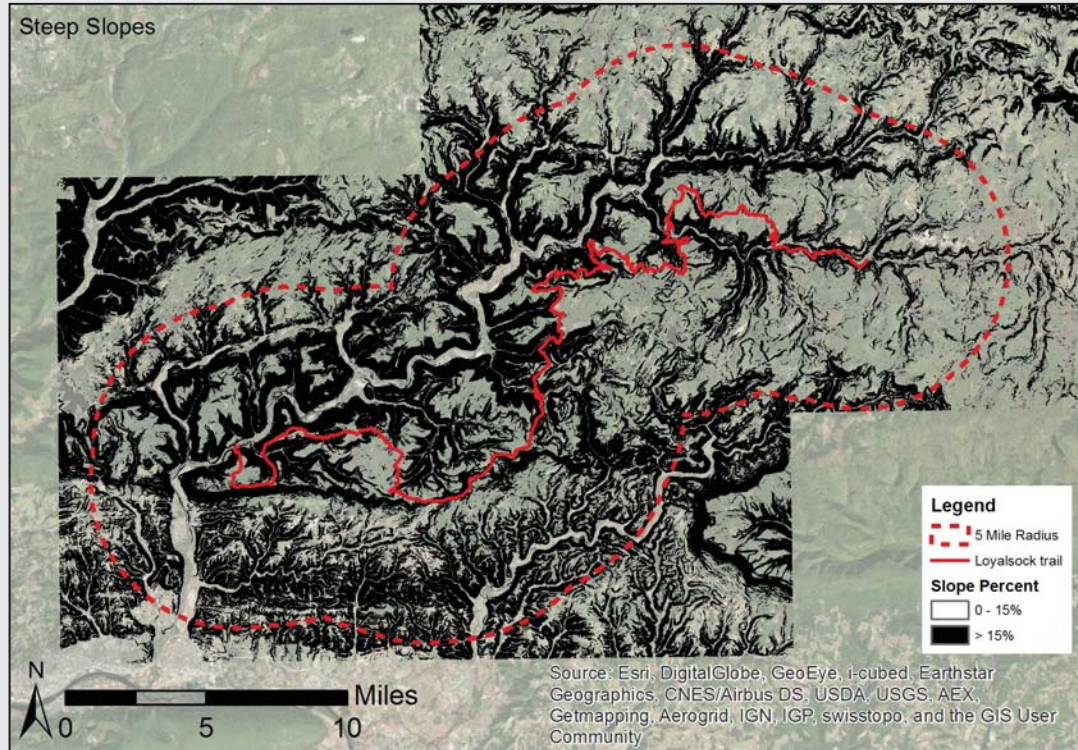




# Viewshed Protection

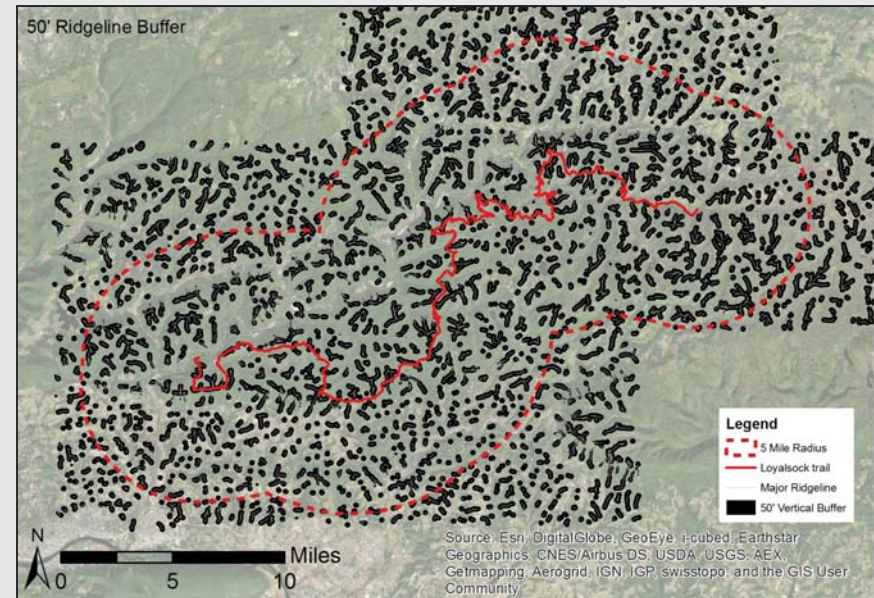
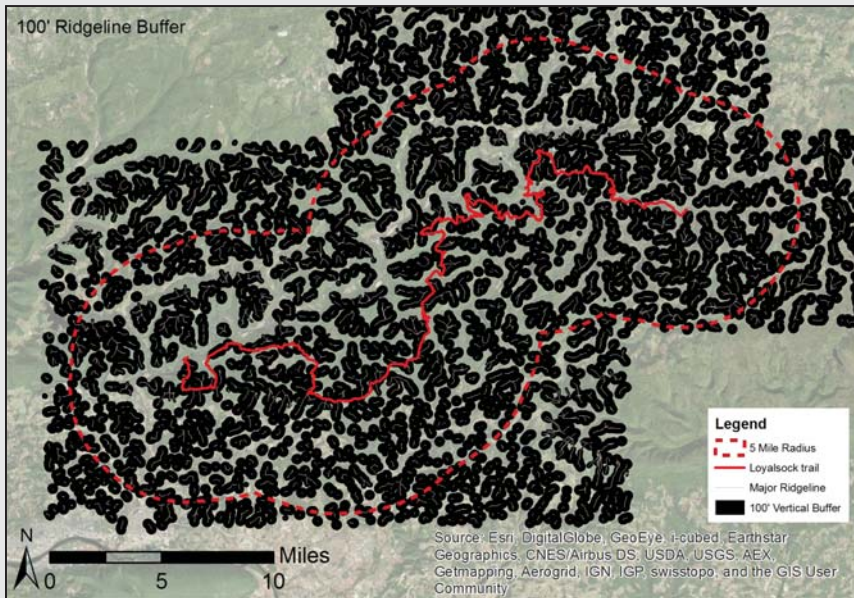
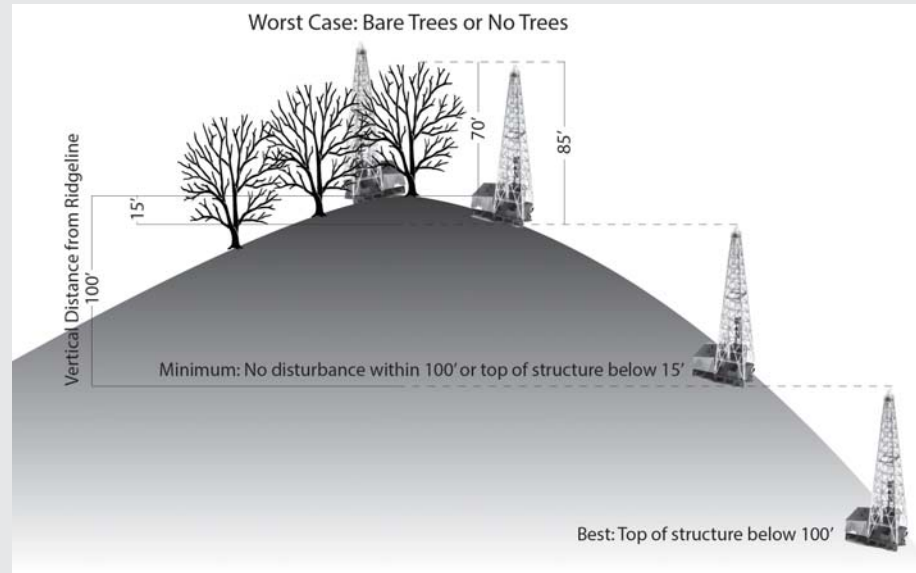


# Steep Slope Protection



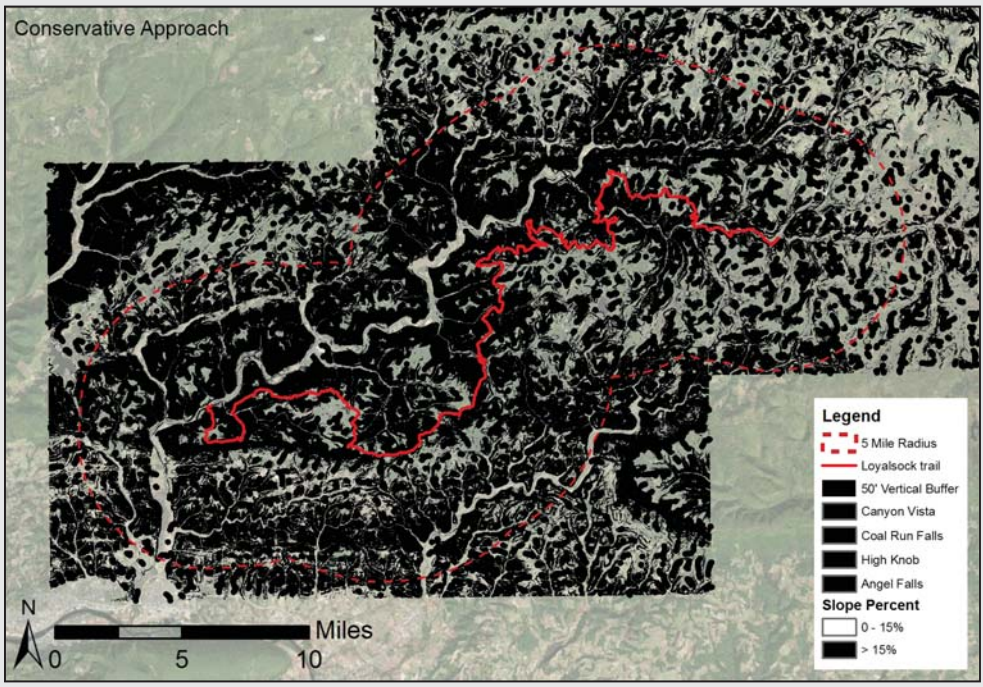
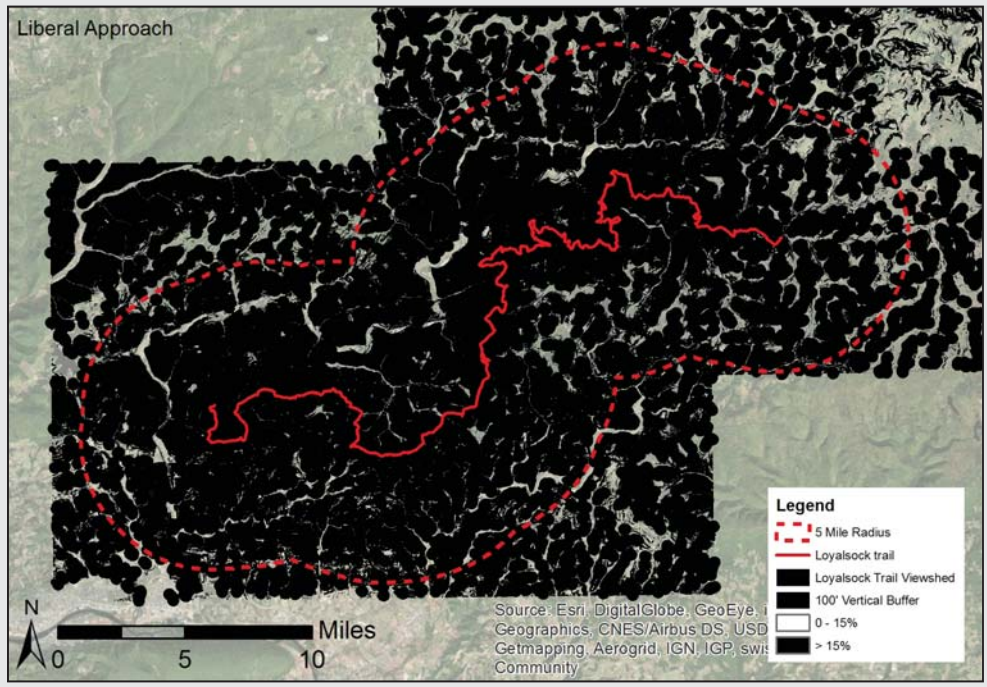


# Ridgeline Protection





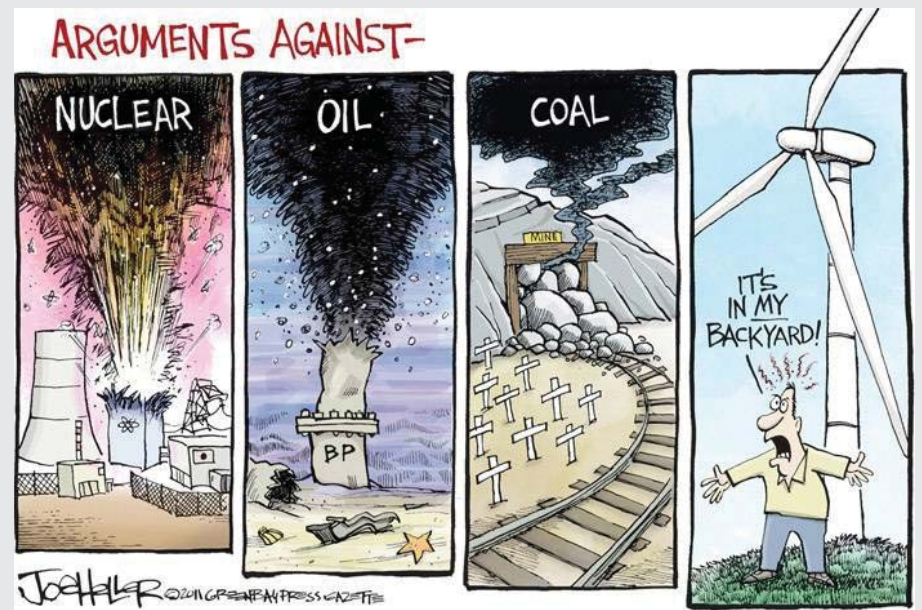
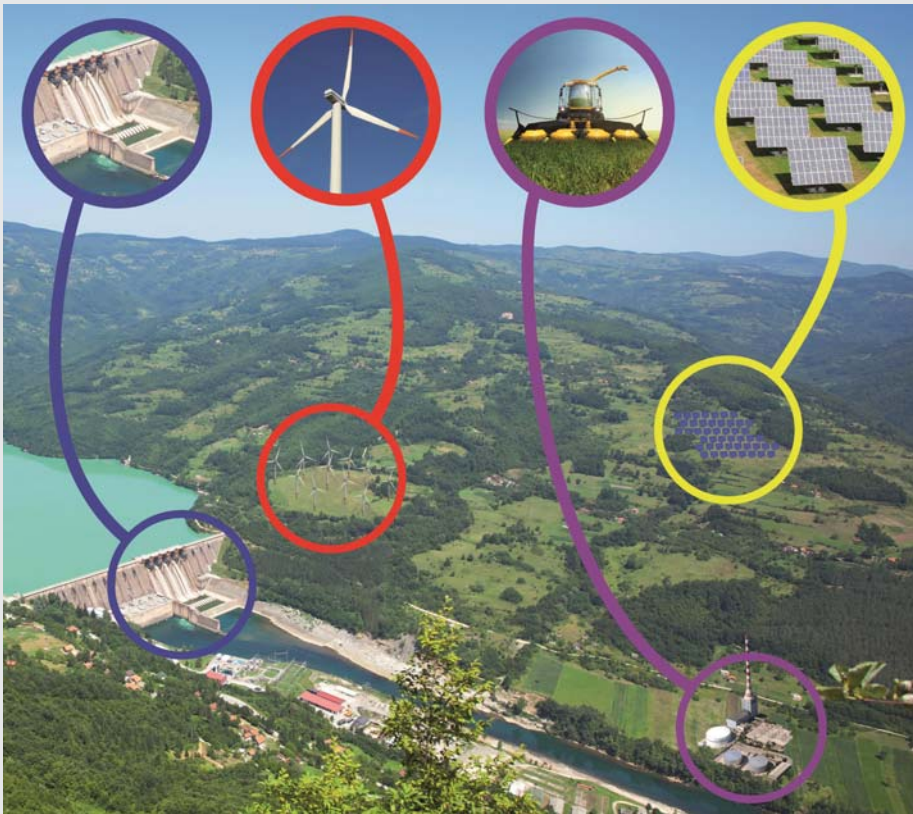
# Combined Ordinance





## Continuing Research Interests

- ~ Crowdsourced data as a design and decision making tool
- ~ Visual impacts of resource extraction and renewable energies upon the landscape
- ~ Social dimensions of natural resources, energy, and the environment



A landscape photograph showing a sunset or sunrise over a mountain range. The sky is filled with soft, colorful clouds in shades of orange, pink, and purple. The sun is low on the horizon, creating a bright glow. The mountains in the foreground are silhouetted against the bright sky.

Thank You

Questions?