



**Science
Policy
Society**
Budget Report

2018-2019 SCIENCE POLICY SOCIETY

Budget Report

A Note from Our President	3
A Note from Our Faculty Advisor	4
What is Science Policy Society	5
Why Science Policy?	6
Society Membership	7
Sponsor Benefits	8
Funding and Proposed Budget	9
Connections	11
2018-2019 Events	12
Future Plans	21



Thomas Nigl

A note from our President

The Penn State Science Policy Society is an organization that educates the community about scientific research, provides graduate students the tools and experiences to advocate for science, and develop necessary professional relations to advance their careers.

Science policy begins with science communication, as communication is vital to understanding science-based policy, and public support of scientific progress is necessary for the advancement of the United States. As scientific research is discussed, citizens develop scientific literacy, promoting critical thinking when consuming media, and empowering them to advocate for informed choices related to policies. With a growing sense of the importance of science, citizens become scientific advocates to better their lives and the lives of those around them.

The Science Policy Society is comprised of 373 members from a variety of disciplines and backgrounds. We educate the community through our popular Science on Tap and Science Brew programs. We advocate for research support and funding on Capitol Hill and organize civic community events. We develop our members professionally through connections to those in the field, such as AAAS members and our keynote lecturer Gina McCarthy.

We need scientific voices in our government to make the hard, correct choices that will protect our future. As graduate students, we defy expectations of our role as lab bench or desk occupants. We reach out from the university and into the community to hear their questions, develop an understanding with one another, and make our voices heard as one to make our future better.



A note from our Faculty Advisor

2018-2019 SCIENCE POLICY SOCIETY

PENNSTATE



Department of Meteorology
College of Earth and Mineral Sciences

Mar 27, 2019

(814) 865-0478
FAX: (814) 865-3663
E-mail: metcodept@cms.psu.edu

The Pennsylvania State University
503 Walker Building
University Park, PA 16802-5013

To Whom It May Concern:

As faculty advisor for the Penn State Science Policy Society for the past five years, I am constantly impressed with these students' efforts and their drive to bring science policy to the forefront of the development of Penn State and its community. The Science on Tap and Science Brew programs they established have become foundational science outreach programs in the State College community. I could not be more proud of how SPS is bringing leading experts at the interface of science and policy like former EPA administrator Gina McCarthy to our campus, vibrantly contributing to the intellectual environment here at Penn State. Not to mention, they proudly serve the community through civic services, such as absentee ballot drives, speaking with legislative members about scientific research, and providing a free election day carpool for State College residents.

By building programs that bridge society and science, they address the needs to Engage Our Students, Enable Access to Education, and Ensure a Sustainable Future, three of the foundational goals of Penn State's Strategic Plan for 2025. The Science Policy Society will continue to educate the Penn State and State College communities, advocate for the use of science to craft effective policy, and act as an agent of change and progress to impact our future at a local and federal level.

I would urge continued financial support for their efforts by all participating units on campus.

Sincerely,

Michael E. Mann

Distinguished Professor of Meteorology

What is Science Policy Society?

Our mission is to engage in community outreach and education to emphasize the importance of science research, to advocate for progressive science policy, and explore career opportunities in science policy and advocacy.



**Outreach
& Education**



Advocacy



**Professional
Development**

The Science Policy Society hosts a large number of speakers, events, and trips for our membership that fulfill our mission. Funding sponsors allow our group to provide these opportunities to the Penn State and State College community. Throughout this report, highlighted events provide examples of how this funding has been utilized.



Why Science Policy?

Why is it so important for graduate students to master the language of policy? Policy makers are responsible for allocating federal and state funds for research. Knowing how to speak with policy makers translates to researchers successfully advocating for more funding in the right areas. Policy makers also create policies based on science and impact how we conduct research. It is pertinent to create a bridge between policy makers and researchers to capitalize on each other's knowledge to create effective legislation. Science Policy Society introduces graduate students to policy and provides the first steps to integrate science with politics, and the connections needed to become a science advocate.

What do SPS members gain? The Science Policy Society educates graduate students, connects with Congress, and reaches out to local communities. We educate by providing science communication training, hosting Congress members for intimate discussions, sending members to D.C. to advocate for science, and engaging with on and off-campus experts. Science Policy Society facilitates involvement with local and national politics for those pursuing policy careers or making their voices heard.

How do we help Penn State and the nearby community? Science Policy Society consists of some of Penn State's brightest future researchers that want to improve the world around them. In recent years, we have fostered several on and off-campus partnerships, promoting Penn State and our donors at a national scale. We also encourage community members to participate and learn about our world-class Penn State research. Finally, we are creating a network of Penn State students, faculty, and staff, and State College community members that will discuss and educate one another to increase scientific literacy and empower each other to make informed choices to improve our world.

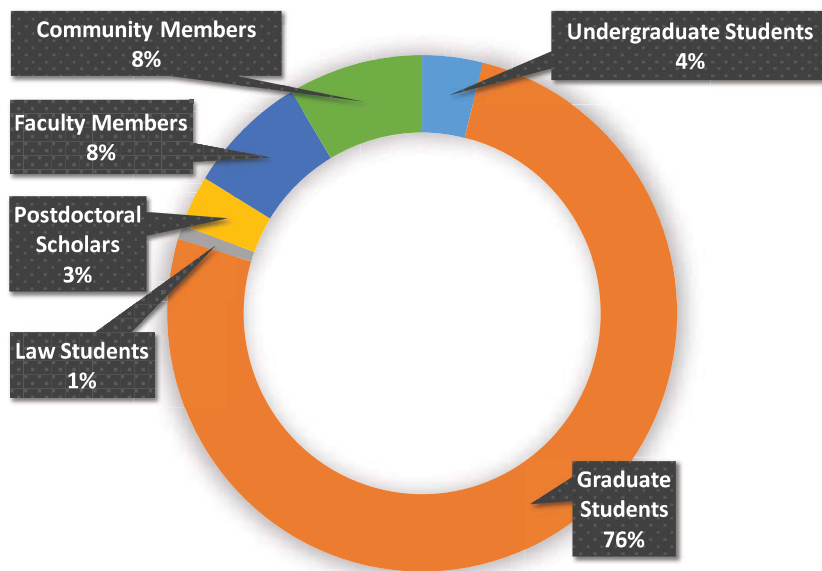
Society Membership

SCIENCE POLICY SOCIETY

Membership:

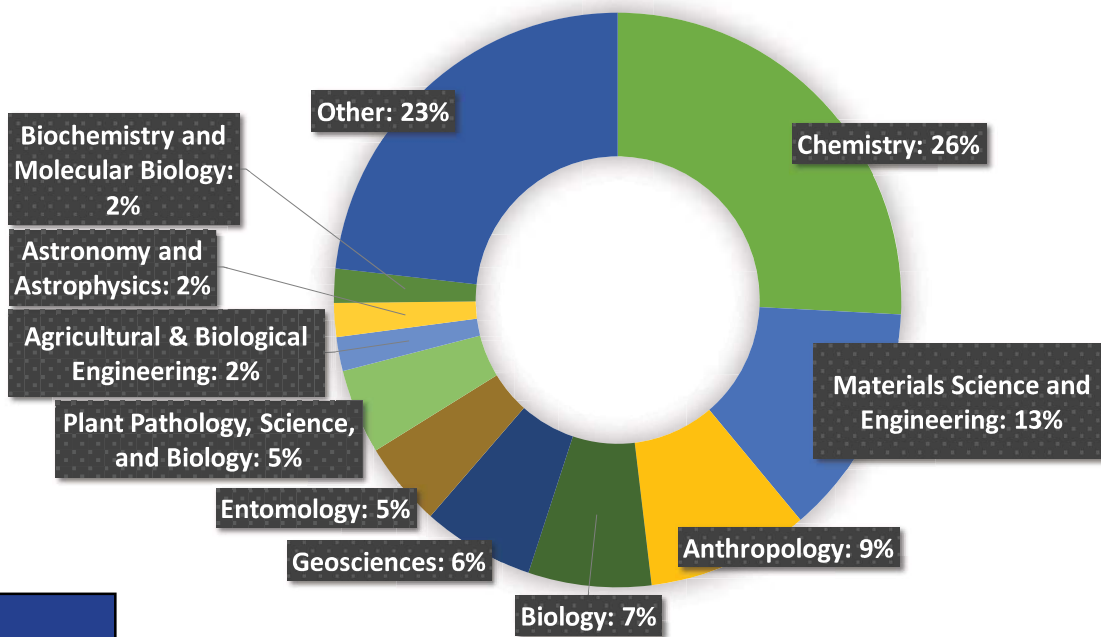
2018 2019

320 → 373



2018-2019

Participating Departments



Other:

Aerospace Engineering | Agricultural Econ, Sociology, and Ed | Biobehavioral Health | Biomedical Engineering | Chemical Engineering | Civil and Environmental Engineering | Communications | Computer Engineering | Computer Science | Earth Science and Policy | Ecology | Ecosystem Science & Management | Food Science | Forensic Science | Geography | Higher Education | International Affairs | Kinesiology | Landscape Architecture | Law School | Mathematics | Mechanical Engineering | Meteorology | Microbiology | Nuclear Engineering | Nutritional Sciences | Physics | Psychology | Science, Tech, and Society | Statistics | Studio Art | Veterinary & Biomed Science



Sponsor Benefits

Why become a sponsor of the Penn State Science Policy Society?

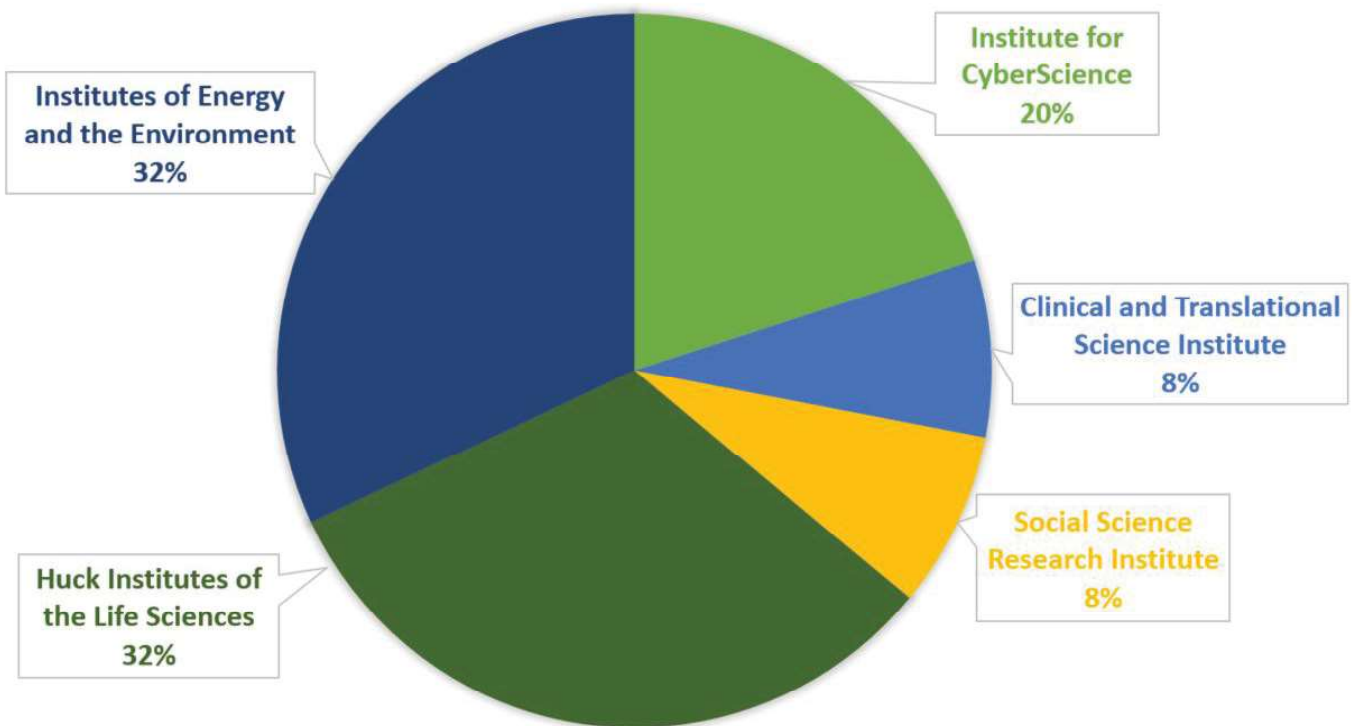
- All of our event media will prominently mention and/or show your organization logo, such as the bar below
- Our website will be updated with your information and links to your organization that you provide
- We will promote your events through our social media accounts (Facebook, Twitter, Instagram, Snapchat), our calendar, and our monthly newsletter
- We will happily plan collaborative events between your organization and the Science Policy Society
- Free literature or giveaways provided by your organization can be distributed at sponsored events
- In the event that we are livestreaming an SPS event, we will mention your organization on the livestream
- Your organization's logo will be placed on any SPS sponsored apparel
- Your sponsorship allows our members to impact our local, state and national communities through a range of outreach and professional development programs. We could not do this work without your support



Current Funding

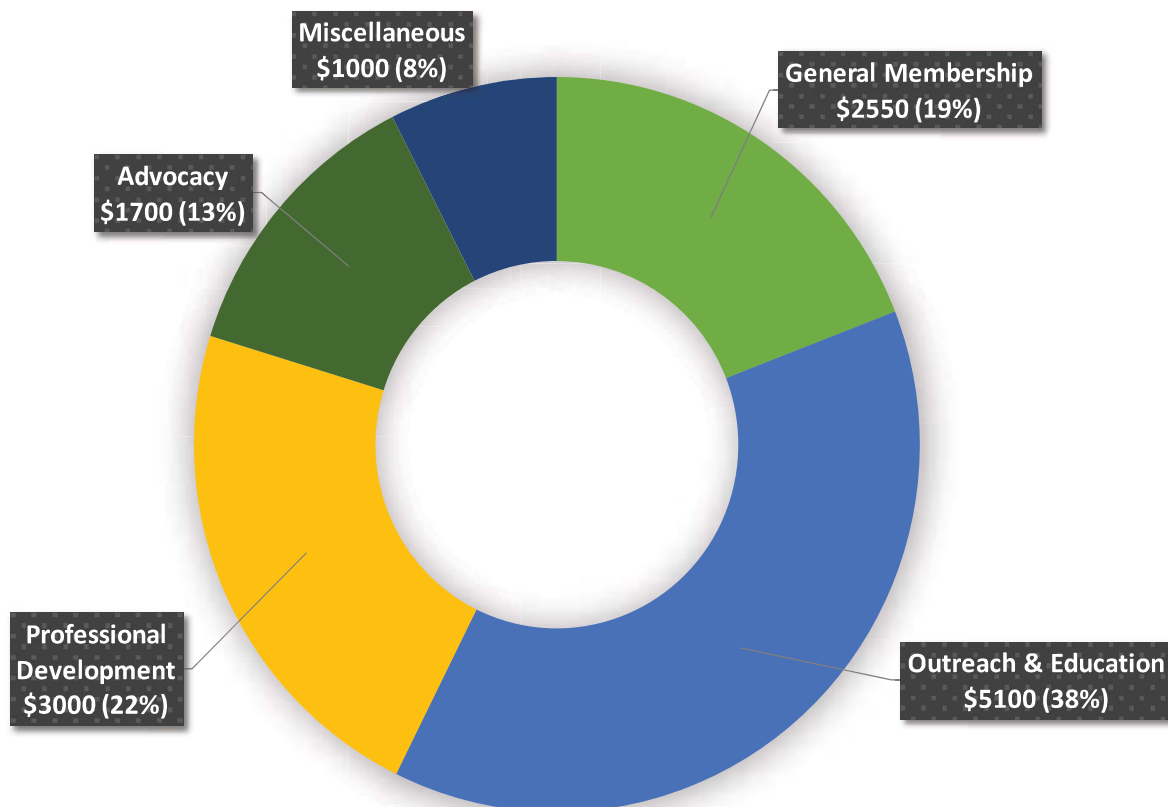
Programs and events hosted by the Science Policy Society are funded through a number of centers, programs, and institutes. The distribution of allocated funds are displayed below. Funding for general meetings expanded significantly to increase active membership, resulting in many new officers and involved volunteers.

2018-2019



Total Amount Fundraised for 2018-2019: \$6,250

Proposed Funding



General Membership	
General Meetings	\$2000
Social Events	\$200
Lecture Refreshments	\$350
Subtotal	\$2550
Outreach & Education	
Science on Tap + Science Brew	\$2500
Science Insider	\$100
Keynote Lecture	\$2500
Subtotal	\$5100
Professional Development	
Speaker Travel	\$3000
Advocacy	
Election Day Carpool	\$200
Congressional Hill Day	\$1500
Subtotal	\$1700
Miscellaneous	\$1000
Grand Total	\$13550

Grand Total: \$13,550

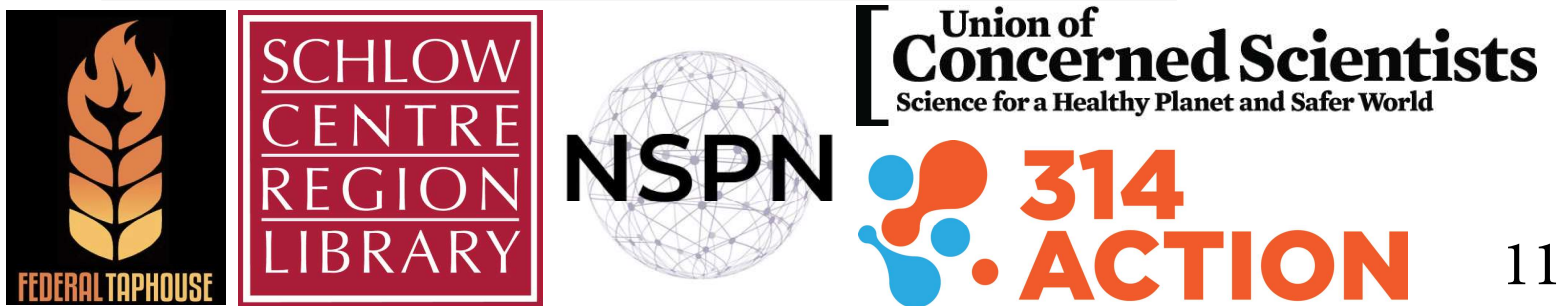
Connections and Collaborations

In the 2018-2019 academic year, the Science Policy Society has significantly increased its number of connections, both on-campus and across the region and state. Our partnerships allow SPS to spread our mission of education, advocacy, and outreach. With our network, the Penn State Science Policy Society is now known at a national level and represents the Penn State Community in a positive light.

On-Campus Connections



Off-Campus Connections



2018-2019 Events

- 09/24/2018** **Roundtable Discussion
with Marc Friedenber**
- 09/28/2018** **SPS Social Hour**
- 10/11/2018** **Discussion with Tom
Trite and Carrie DeLone:
PA Options for Wellness**
- 10/22/2018** **2018 Election:
Absentee Ballot Drive**
- 10/24/2018** **SPS Game Night at
Webster's Bookstore**
- 11/06/2018** **2018 Election:
Election Day Carpool
Extravaganza**
- 12/03/2018** **What Is Self-Care? A
Discussion about Grad
Student Mental Health**

2018-2019 Events

- 02/26/2019** **What Makes Science
"Science"?**
- 03/22/2019** **PSU to The Potomac
Institute: Transitioning
from Academia to Think
Tanks**
- 04/03/2019** **The Future of Science
and the World: A Chat
with Gina McCarthy**
- 04/04/2019** **Innovate Health!**
- 04/18/2019** **Green Cards, Visas, and
You**

SPS General Meetings



In August 2018, SPS began holding monthly general meetings with provided lunch to encourage community among SPS members, and establish a forum for discussing science policy in the news.

Benefits include...

- ...more active members volunteering for events
- ...more members leading their own SPS events
- ...stronger connections among SPS members



130
in attendance

The Future of Science and the World: A Chat with Gina McCarthy

Largest SPS Event Held to Date

“More scientists should hear this talk! Many scientists that want to help the community or go into policy don’t know where to start. Science communication is so important!”

-Testimonial from attendee





Event Focus

Election Day Carpool Extravaganza



Media Coverage:
PENN STATE **NEWS**
COMMEDIA News

Between all the demands of undergraduate or graduate courses and research, students do not have the time or ability to get to their off-campus polling locations. The Science Policy Society recognized these obstacles to voter turnout in the 2018 election and organized a free carpool service to and from polling stations for anyone on campus.





S | | |--------| | Carbon | | 6 | | C | | 12.011 | DNA E N GLOBE E ON TAP

Science on Tap is our most prominent foray into adult science outreach. It is our community event that brings science to the State College public. Science on Tap is hosted once a month and brings Penn State researchers to the general public in a relaxed atmosphere

Previous Topics

- Climate Change • Fracking • Race • Gravitational Waves • Alcohol • Antarctica • Dairy Science • Video Games • Power Dynamics • Genetics • Solar Energy • Athletic Mental Training • Animal Behavior • Coral • Ethical Recruitment • Aging • Honeybees • Ice Cream • Medical Marijuana • Ticks • Health Data • Vaccines • Gene Editing • Viviparity

Science on Tap Highlights

September 2018: Science on Tap moved to Federal Taphouse, and 110 attendees discussed the anthropology of alcohol



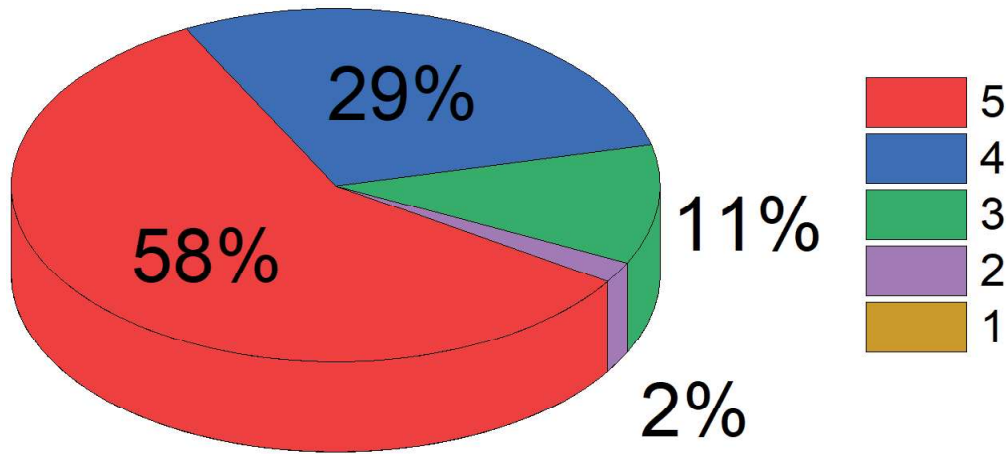
November 2018: Science on Tap and the Clinical and Translational Science Institute co-hosted a discussion on vaccinations and humanitarian crises.

March 2019:
Science on Tap partnered with Astronomy on Tap and OLLI to discuss gravitational waves with retired State College citizens



Science on Tap: Statistics

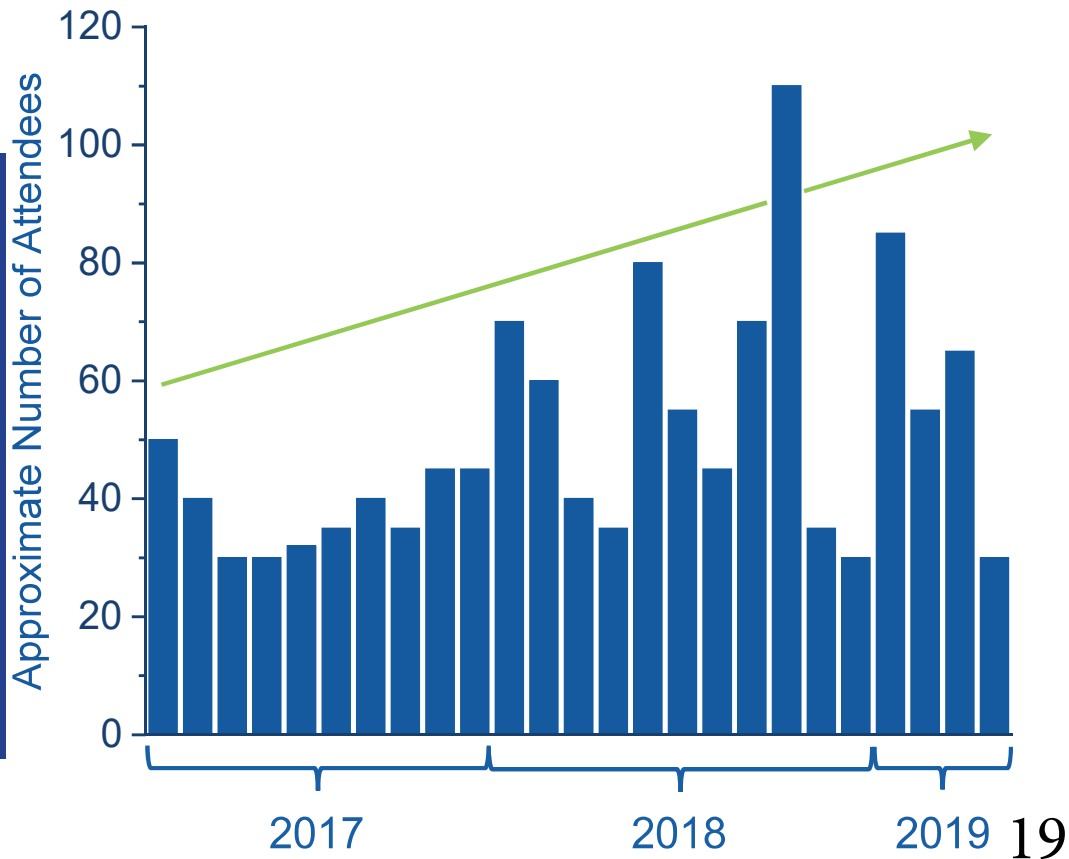
98% Positive Rating



Attendance

2017 2019

38 → 59



Congressional Hill Day

6
SPS members were sent to D.C.



Meeting with Agencies



Congressional Visits

Chris Van Hollen (MD) · Andy Harris (MD) · Conor Lamb (PA)
20

Events in the Works

May 2019

A Scientist's Path to Policy: Teresa Williams
Science Insider - Green New Deal
Special Election Day Carpool



June 2019

Pride in Policy: Samuel Brinton
LGBTQ+ in STEM Panel



July 2019

AAAS: Science Policy Writing Workshop

August 2019

Trans in STEM: Angelica Ross, CEO of
TransTech Social Enterprises

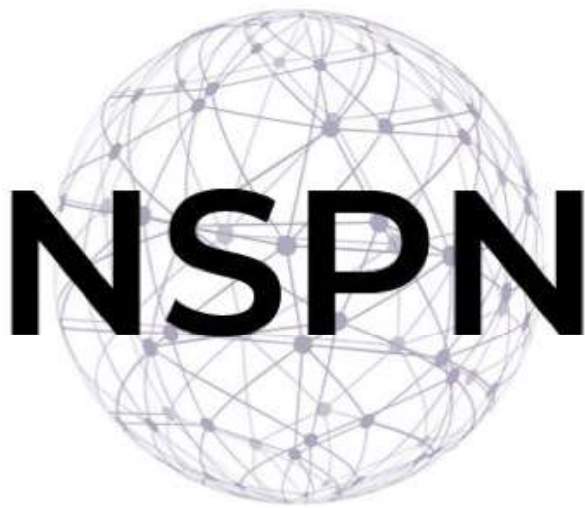


September 2019

Science on Tap Workshop
Panel on Climate Change with
Special Guest, Andrew Revkin

Upcoming Event: Science on Tap Workshop

With the success of Science on Tap, SPS aims to expand the program to other Penn State campuses. By creating a network of science outreach across Pennsylvania, we will promote scientific literacy, critical thinking when consuming media, and citizen empowerment to advocate for informed policy choices. To create this network, SPS is hosting a one-day workshop for Penn State campuses and other colleges to help other campuses establish their own Science on Tap program.



**Science Policy Society
was awarded a \$1500
microgrant by the
National Science Policy
Network to financially
support the workshop**

Goal 1: Expand

The Science Policy Society has established a number of successful programs at the University Park campus. Using our collaboration with CTSI, we are establishing similar programs at the Penn State Hershey and Harrisburg campuses. In addition, we will significantly advance science policy and communication at other Penn State campuses through our Science on Tap Workshop in Fall 2019.

Goal 2: Connect

The Science Policy Society has connected with many federal legislative members to discuss national policy. In 2019-2020, we intend to also connect with the state legislature of Pennsylvania. Through more frequent meetings and discussions, we can make deeper connections with the state and influence science-based policies in the legislature.

Goal 3: Collaborate

A number of organizations at Penn State share values similar to ours. As we move forward and host additional events that promote science education, outreach, advocacy, and professional development, we aim to collaborate more frequently with groups (e.g. Graduate Professional Student Association, We Are For Science, Graduate Women in Science) to strengthen our network and educate the community.

