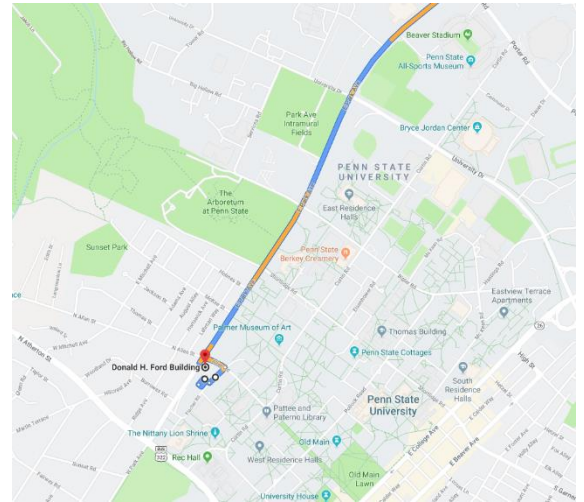


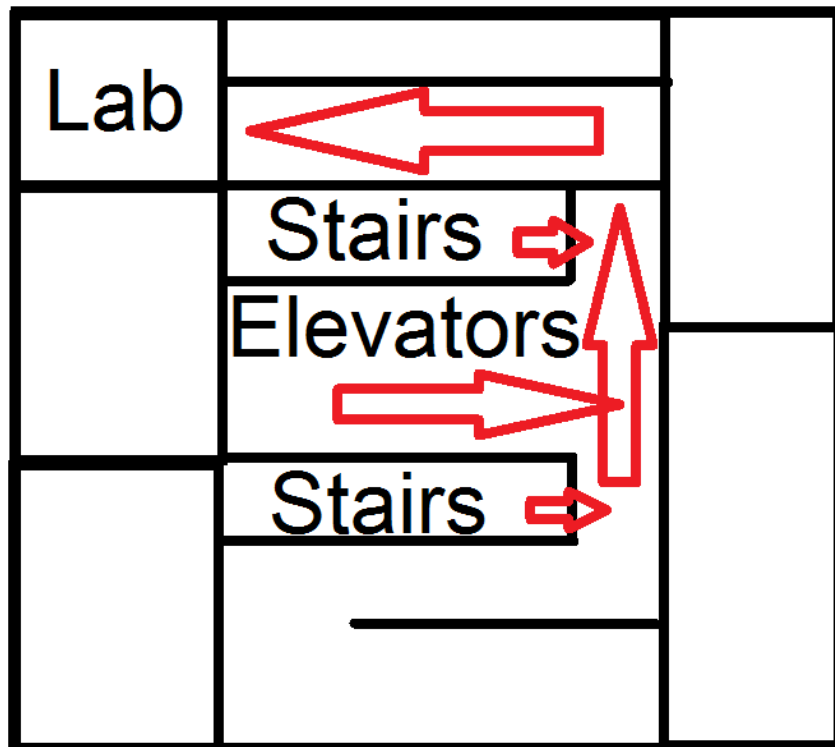
## Driving Directions

1. From the freeway, take the Innovation Park exit to Penn State.
  - a. From 99 southbound, stay on the left lane and it will lead to E Park Ave.
  - b. From 322 eastbound/99 northbound, stay in the right lane and turn right onto E Park Ave.
  - c. From 322 westbound, take the exit and turn right onto E Park Ave.
2. Stay on E Park Ave for 2 miles.
3. Turn left on Allen Road.
4. Turn right on Fischer Road.
5. From there, the Ford Building will be on your right.



## Parking Information

There is a surface parking lot next to the building and a parking garage farther down the street on the left. There are special research parking spaces in the surface lot. If you are coming for a research study, you may pick up a parking pass from Dawn in the clinic on the first floor. The garage charges an hourly rate.



### Building Directions

1. Use the stairs or the elevator to reach the second floor.
2. From the elevators, take the hallway on the left.
3. You will find a door that says Penn State Research (with Adult Neuroplasticity Lab listed).
4. Open that door and go left down the hall to the door at the end.
5. Welcome to our lab!

