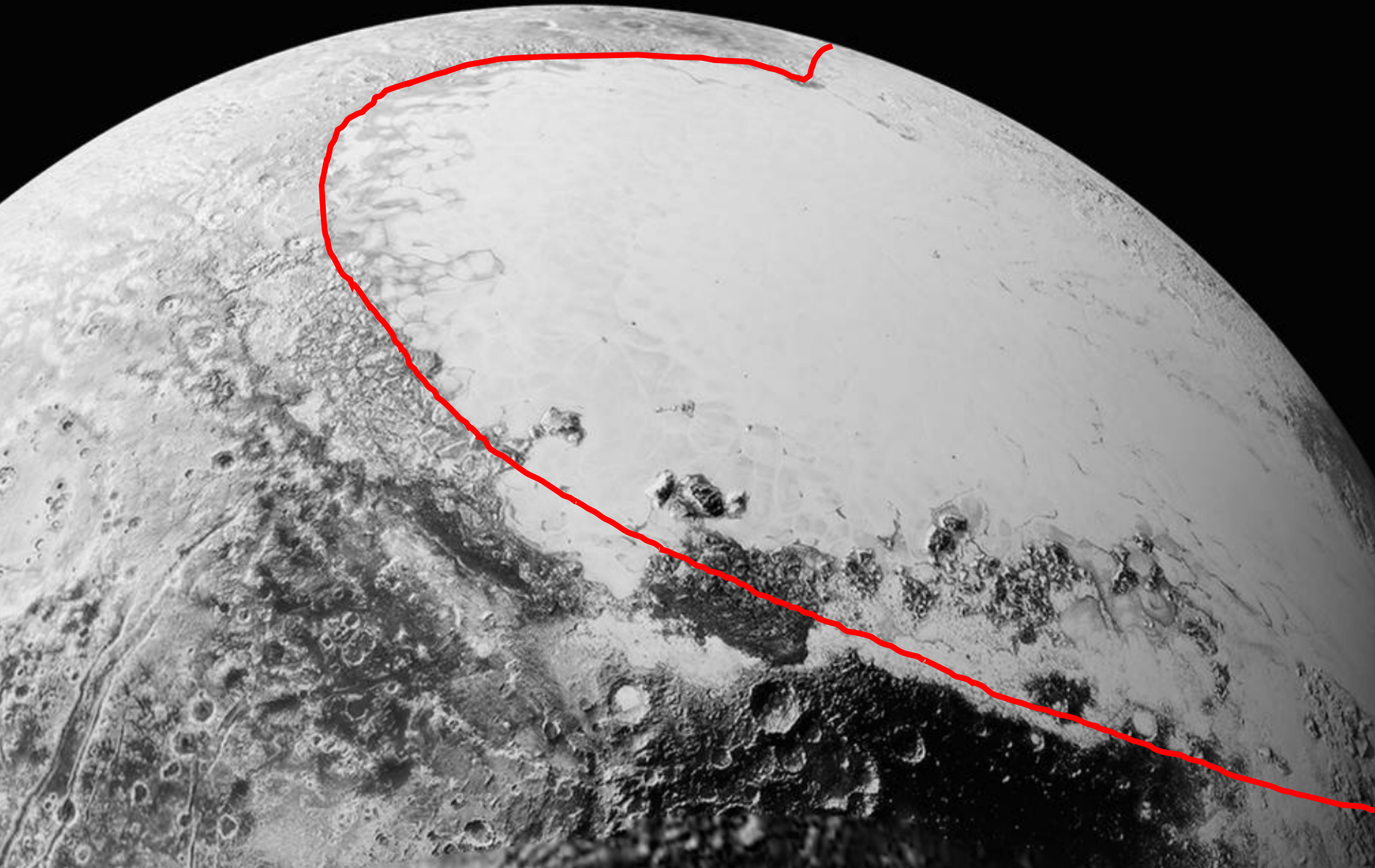


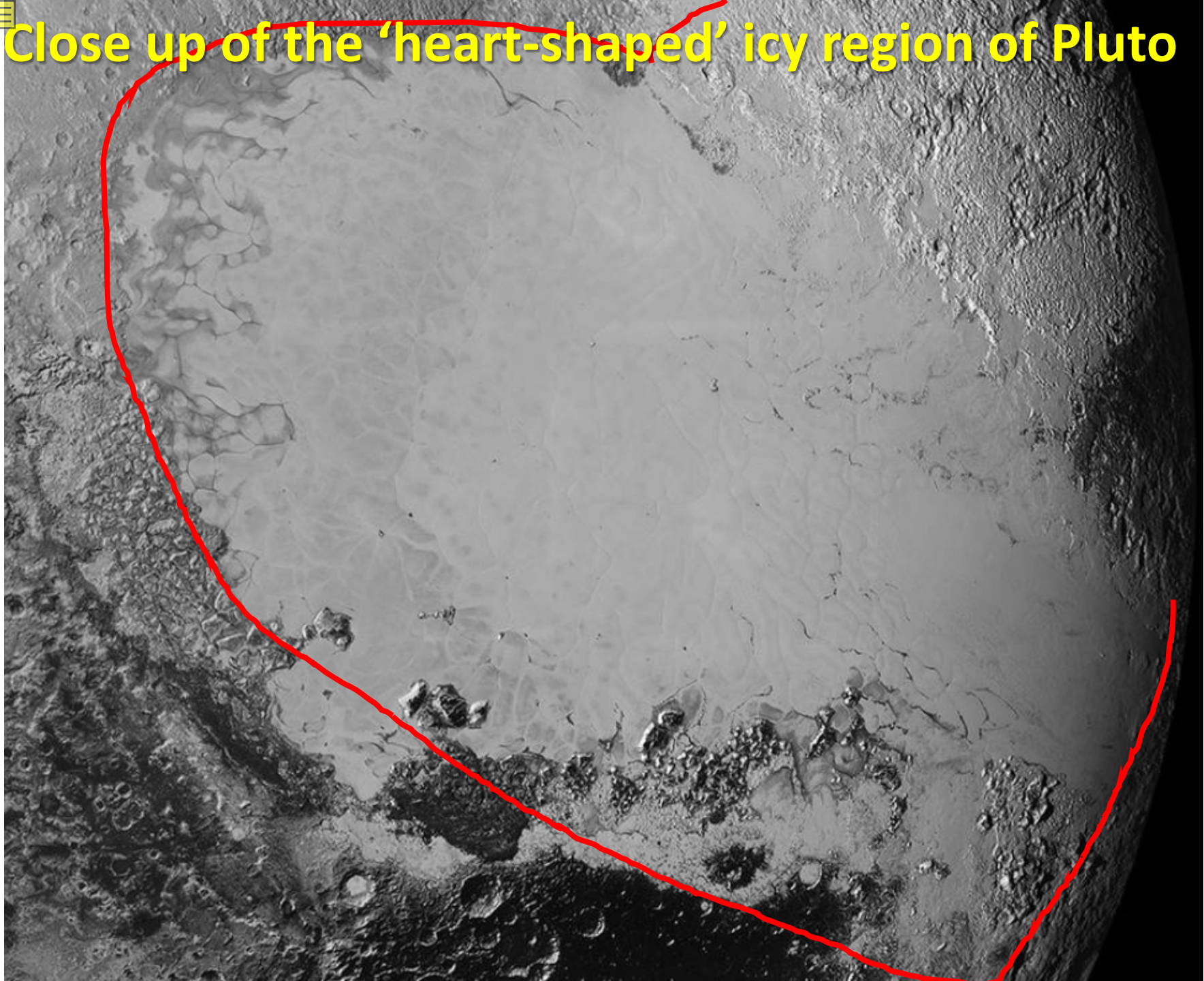
These images of Pluto were downloaded from the following NASA website. They were available on Sept 10th 2015

<https://www.nasa.gov/feature/new-pluto-images-from-nasa-s-new-horizons-it-s-complicated>

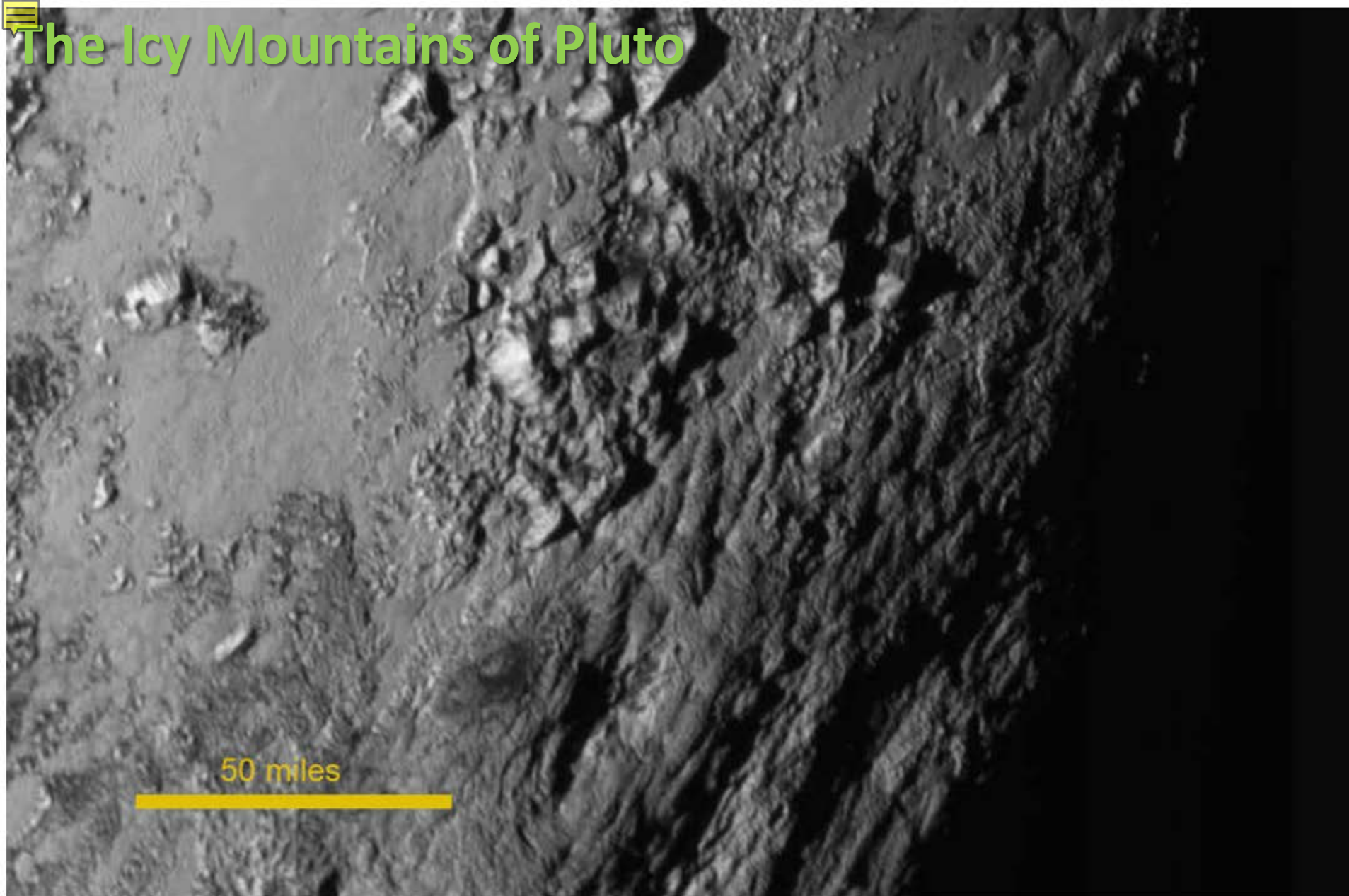
The heart-shaped icy region of Pluto



 Close up of the 'heart-shaped' icy region of Pluto



The Icy Mountains of Pluto



New close-up images of a region near Pluto's equator reveal a giant surprise: a range of youthful mountains rising as high as 11,000 feet (3,500 meters) above the surface of the icy body.

The mountains likely formed no more than 100 million years ago -- mere youngsters relative to the 4.56-billion-year age of the solar system -- and may still be in the process of building, says Geology, Geophysics and Imaging (GGI) team leader Jeff Moore of NASA's Ames Research Center in Moffett Field, California.. That suggests the close-up region, which covers less than one percent of Pluto's surface, may still be geologically active today.

Bright colored icy areas, dark mountains, and circular craters!

Can you find any of these on Pluto?

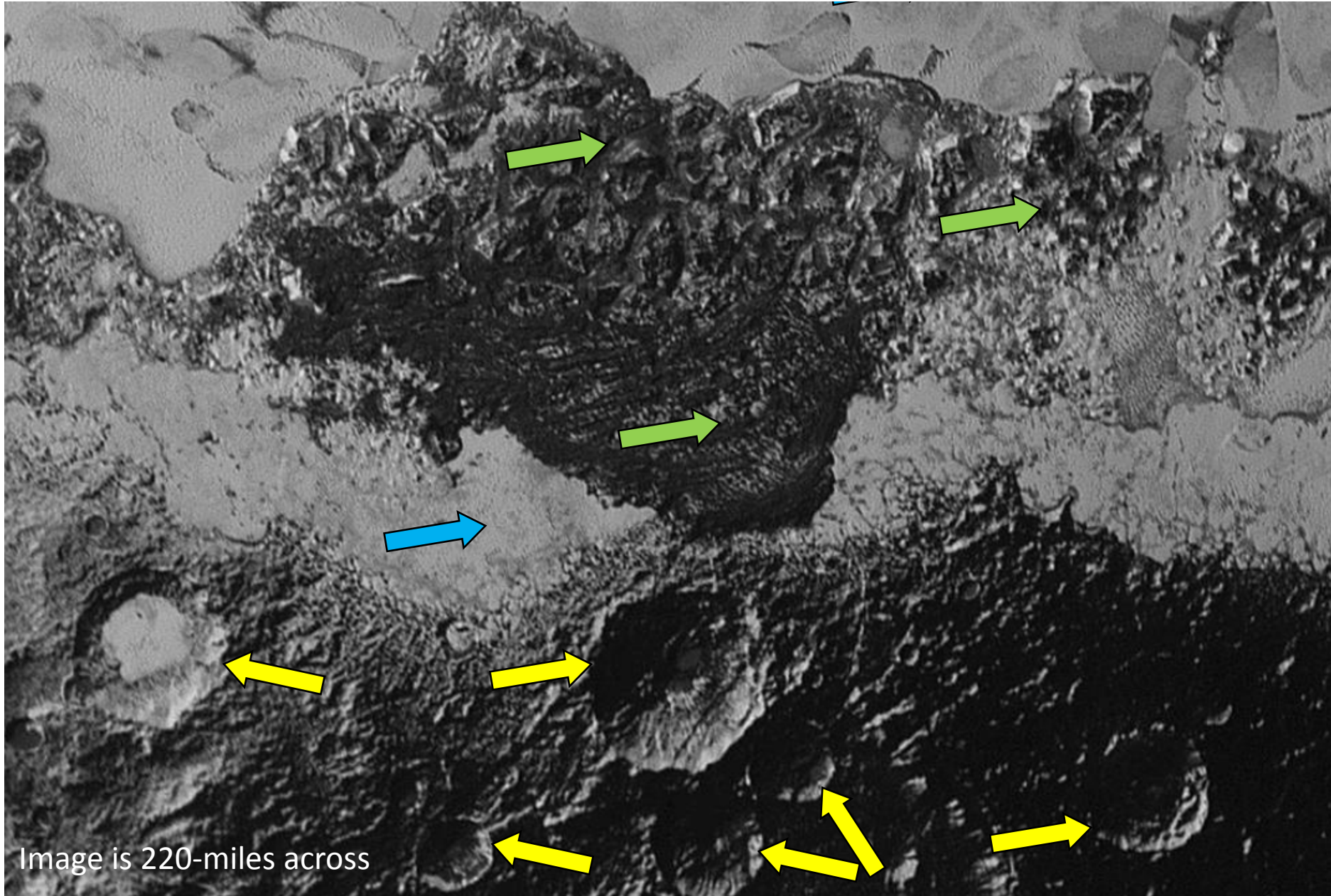


Image is 220-miles across