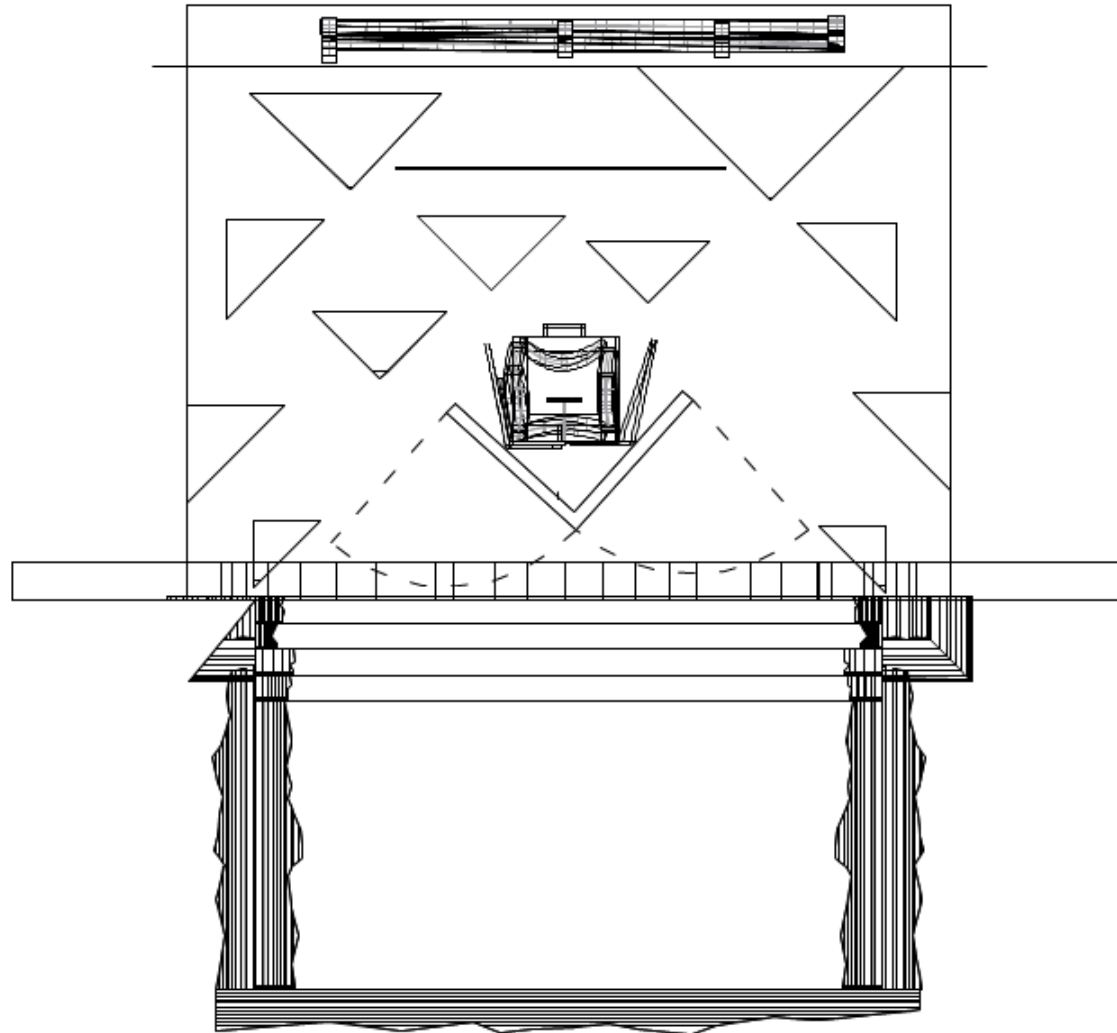


## Medea Front Elevation

The set consists of 10 perspective buildings against a skyline. The ruined ceiling explodes through the proscenium over the thrust, where rubble has fallen and been pushed to the sides. The walls of the auditorium are reminiscent of Yemeni buildings—traditional window carvings surmount scorch marks from the war and street art protesting the violence.



Medea Groundplan



Medea House Right Wall Elevation





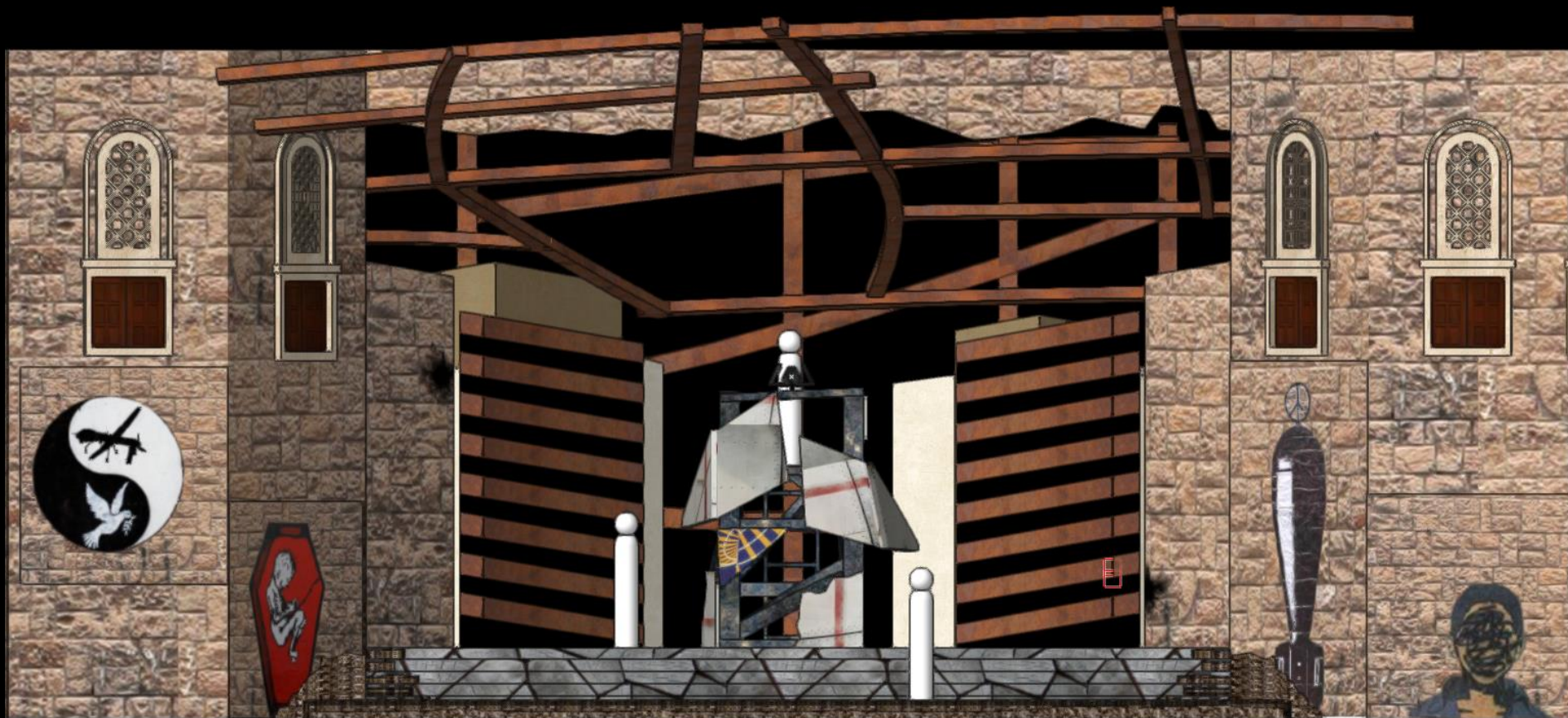
Medea House Left Wall Elevation





## Medea Front Elevation

In the last moments of the play the sky drop falls away, exposing more twisted and ruined metal behind. The downstage center house swings open, revealing Medea's chariot which is inspired by wreckage from the planes which crashed into the World Trade Center.



## Medea's Chariot—Isometric Views





## Medea Front Elevation

As the Chorus sings their final Ode, a flag—more of an abomination really—rises from behind the wreckage in a futile attempt to salvage some pride and dignity from this mutual tragedy.

